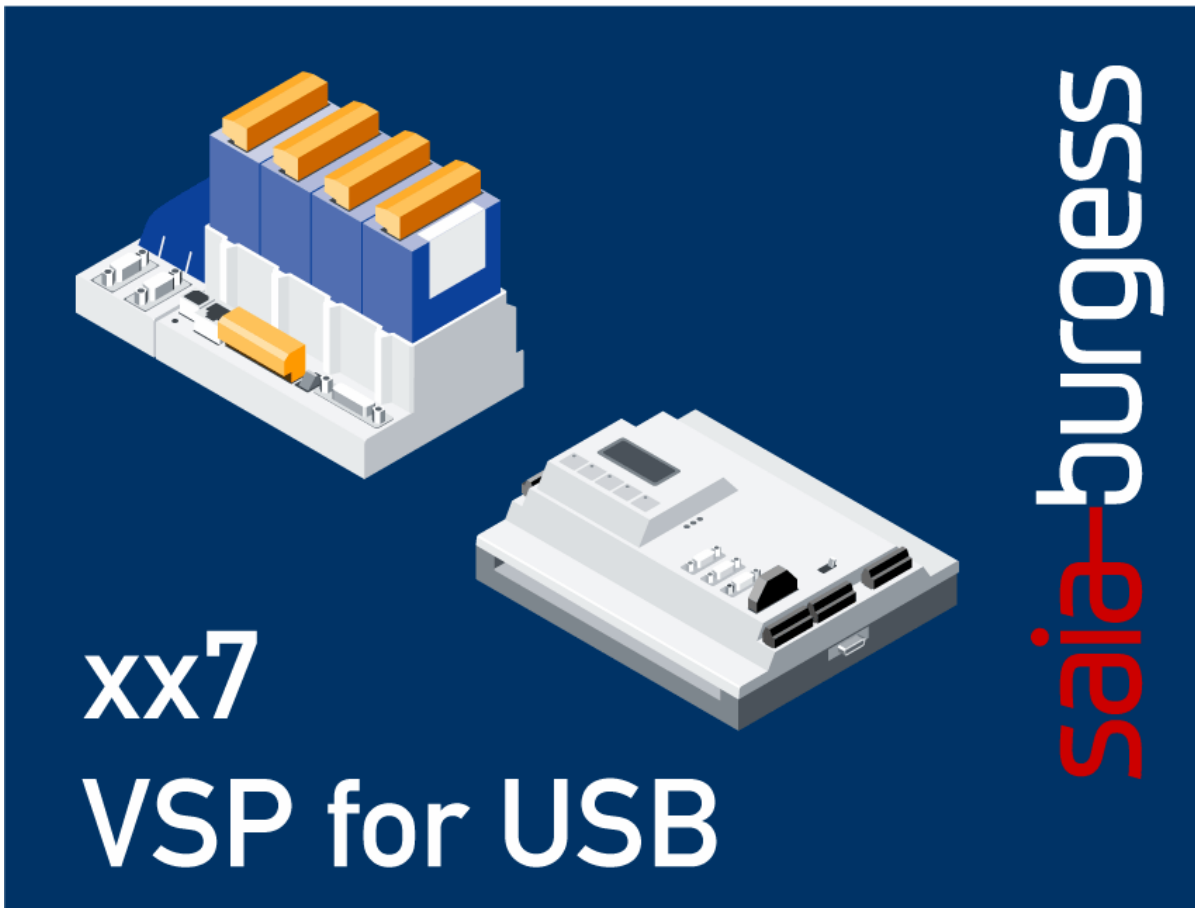


Saia ® PCD xx7 series: VSP for USB

Virtual Serial Port, allowing the **USB** port on Saia® PCD2 and PCD3 **xx7** series devices to be used as a programming interface or as a connection for the Saia® PCD Web Server with Web-Connect.



Contents

1.	Use and restriction	2
2.	Installation	2
3.	Settings	4
4.	Driver installation	6
5.	Simatic Manager	9
6.	Web-Connect	10

Saia-Burgess Controls Ltd
 Bahnhofstrasse 18 | CH-3280 Murten | Switzerland
 T +41 (0)26 672 71 11 | F +41 (0)26 670 44 43

1. Use and restriction

VSP for USB can only be used with the following devices from the Saia® PCD2 | PCD3 xx7 series:

- PCD2.M487, from FW V 1.300
- PCD3.M5447, from FW V 1.300
- PCD3.M5547, from FW V 1.300

This version V 1.1.0.1 of VSP for USB was tested with Simatic-Manager as the programming environment and for linking with Web-Connect to display web pages.

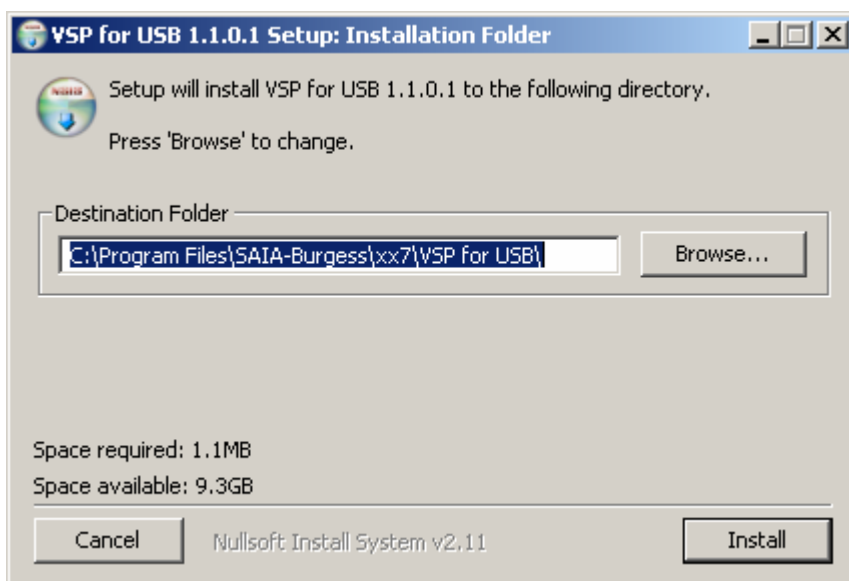
2. Installation

Execute VSPSetup.exe



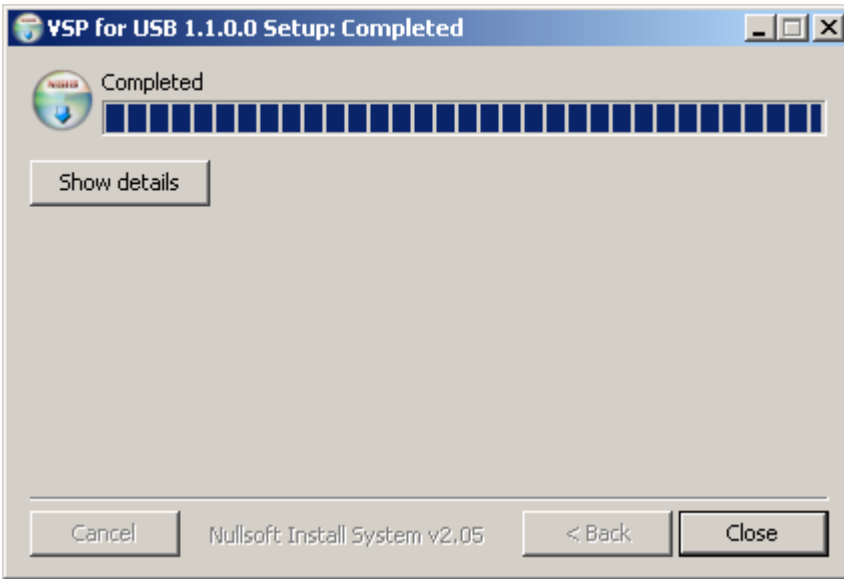
VSPSetup.exe

The following dialogue box is displayed:

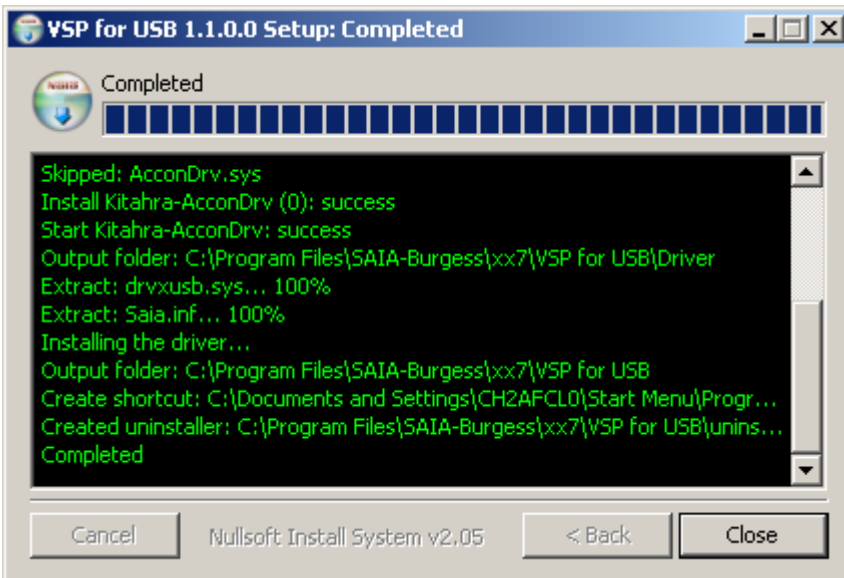


If you do not wish to install VSP for USB in the pre-selected standard directory, click "Browse" to select another directory. To continue the installation routine, click "Install".

The following window is displayed:



Pressing the "Show details" button will open the following window:



Click "Close" when installation is complete.

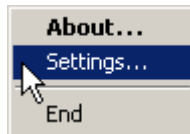
3. Settings

Start up "VSP for USB". If it has been installed in the standard directory, start-up is achieved as follows:

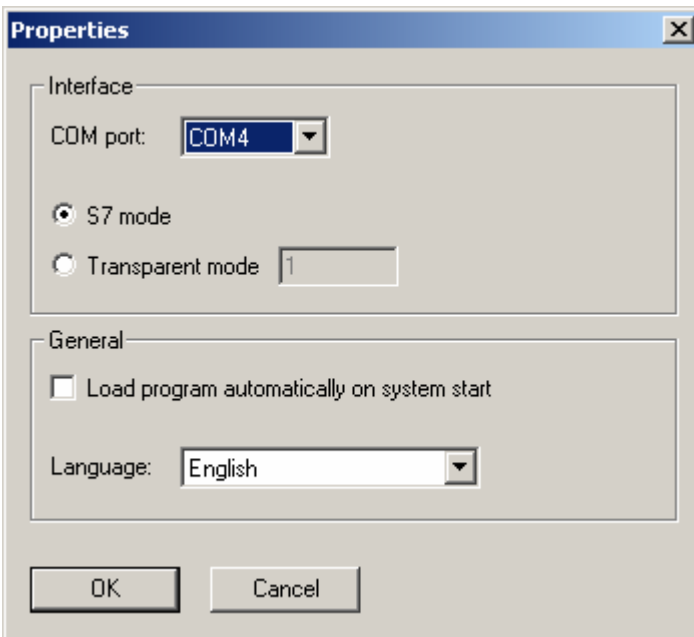


The following tray icon appears on the task bar 

Right-click on the icon to enter the "Settings" menu.



Click "Settings" to display the following window:



At "COM port" enter the COM port number of the serial interface (virtual COM port) you now wish to set up.

Caution:

Although the possibility is offered of selecting from ports COM1 to COM32, when the Simatic Manager is used only COM ports in the range COM1 to COM8 are allowed. Some Bluetooth and infrared applications use COM ports that VSP for USB will not recognize as reserved. If necessary, look in the device manager to check whether the chosen port really is free, before confirming this setting.

For the Simatic Manager (programming interface), "S7 mode" must be selected. Transparent mode is not currently supported.

Saia-Burgess Controls Ltd

Bahnhofstrasse 18 | CH-3280 Murten | Switzerland

T +41 (0)26 672 71 11 | F +41 (0)26 670 44 43

By setting the checkbox "Load program automatically on system start", you can have the driver loaded as soon as Windows starts up, so that it is available right from the beginning. The "Language" selection box contains all available language versions. If "German" is selected, all screen elements will be in German; if "English" is selected, they will be in English.

Double-click on the tray icon (or select menu item "About" from the context menu) to output the VSP information window to the screen. It displays the version number and publication date of VSP for USB.



If you select menu item "End" in the context menu, VSP for USB will close.

4. Driver installation

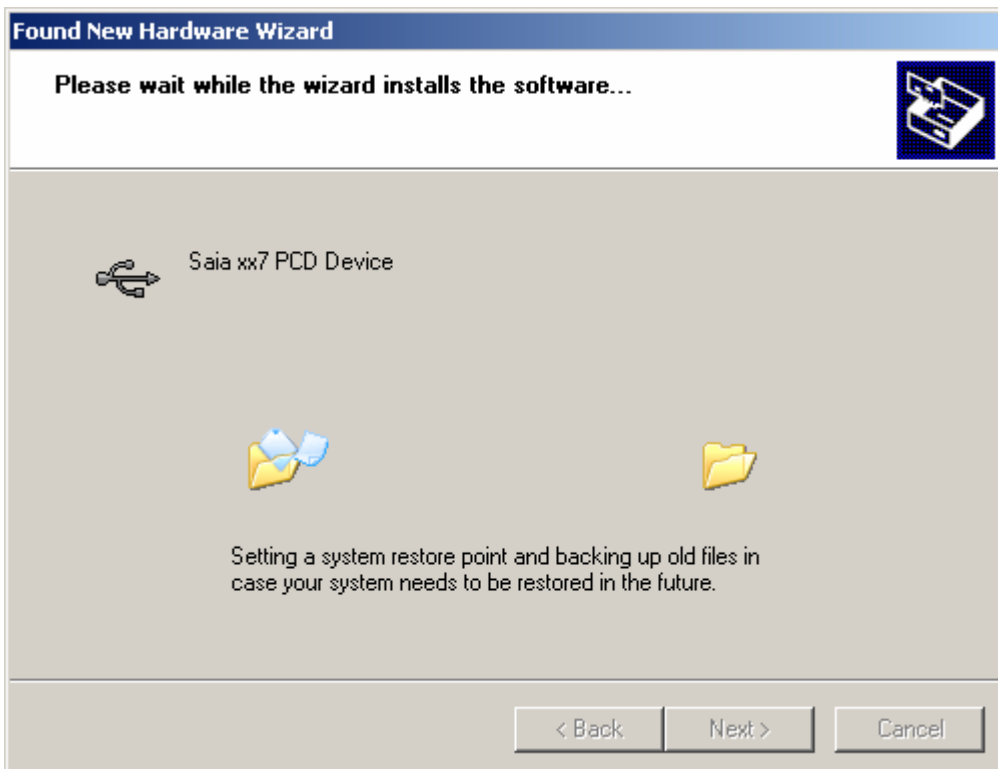
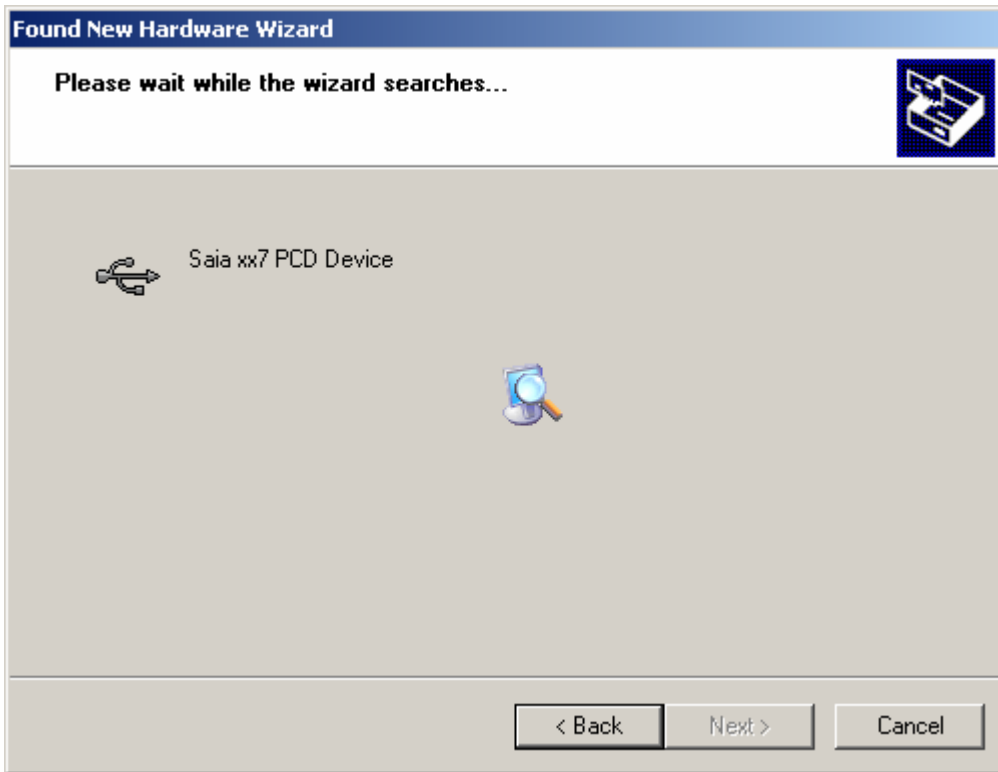
If a PCD is now connected to the PC via USB, the new hardware will be detected.

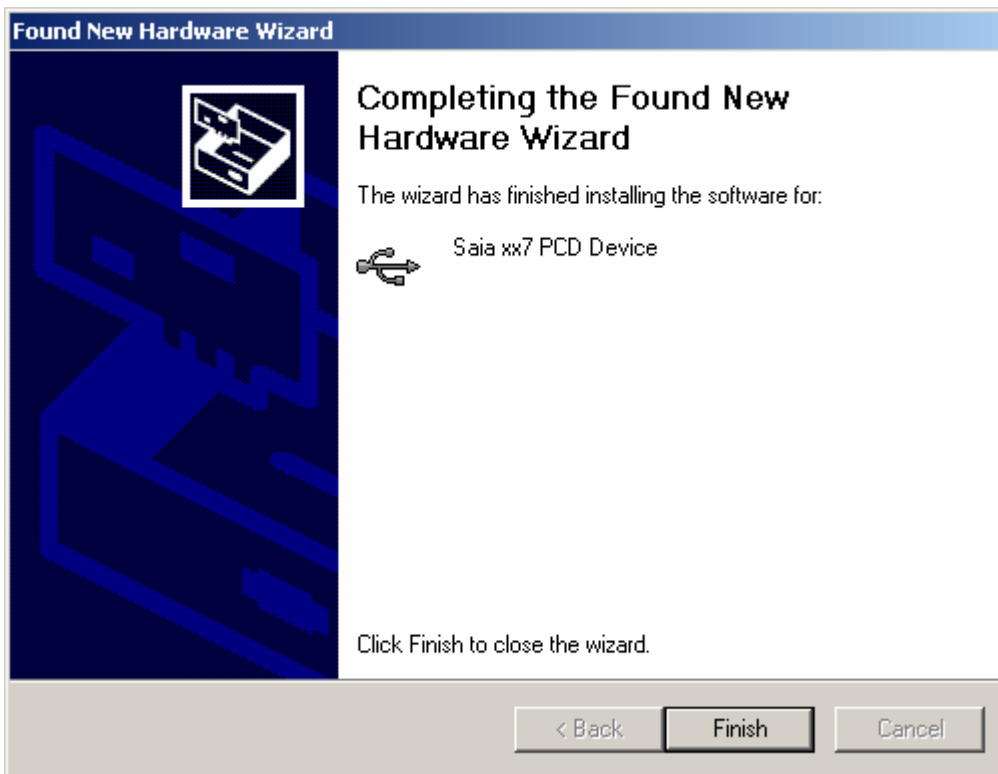


A Windows assistant starts up automatically. It asks for the information it needs to install the new hardware. A dialogue box is displayed for selection of the hardware driver → Select "Install the software automatically".



Wait until the following windows have passed.



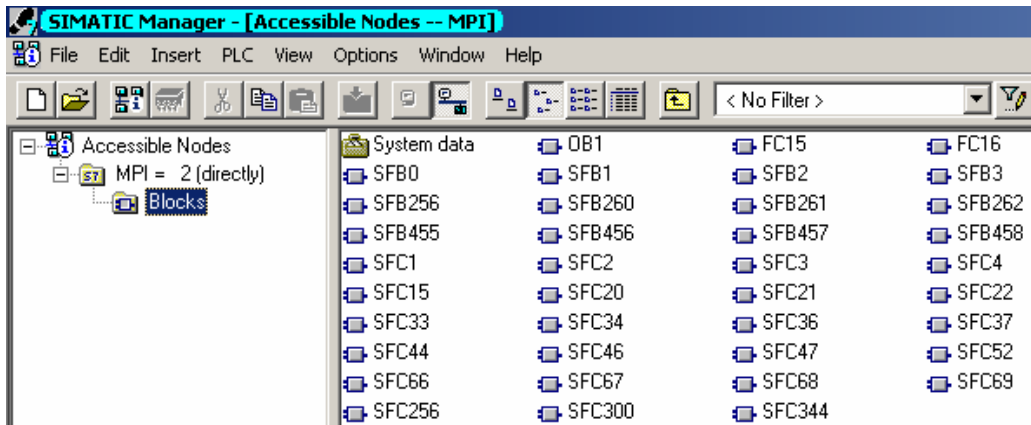
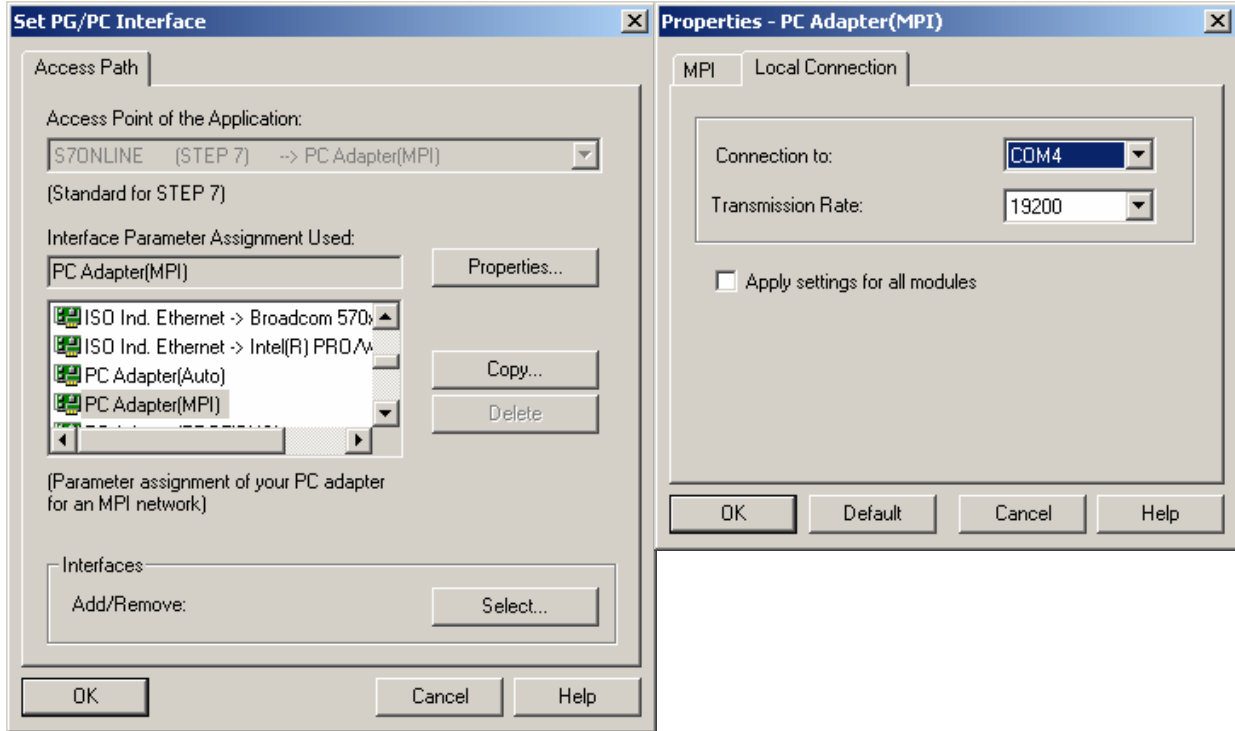


Click "Finish" to close the installation procedure.

When installation has been closed by clicking on "Finish", it could be necessary to restart Windows.

5. Simatic Manager

Before Simatic Manager can communicate across the virtual port, the following settings must be made under "Set PG/PC Interface":



The same settings must be selected as described in section 3: i.e. the same COM port number. The baud rate setting (e.g. 19200) is not relevant, as this parameter is disregarded.

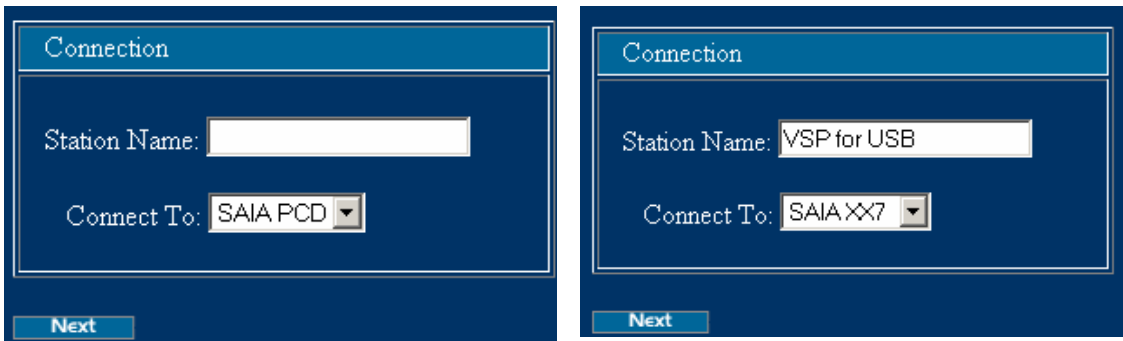
6. Web-Connect

When Web-Connect starts up, the following setup page is displayed via address

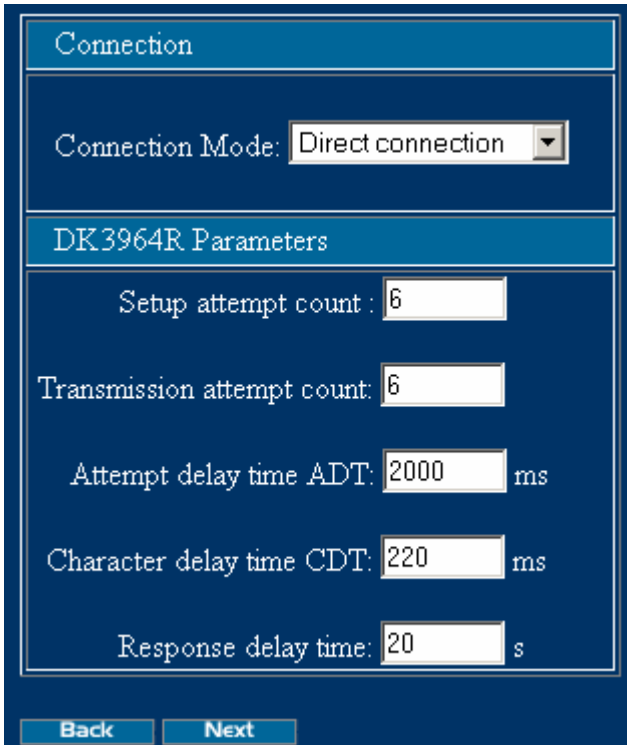
http://localhost/setup



Click the “Add New” button. This will display the following dialogue box. Enter the station name (e.g. VSP for USB), select SaiaXX7, and click the “Next” button.

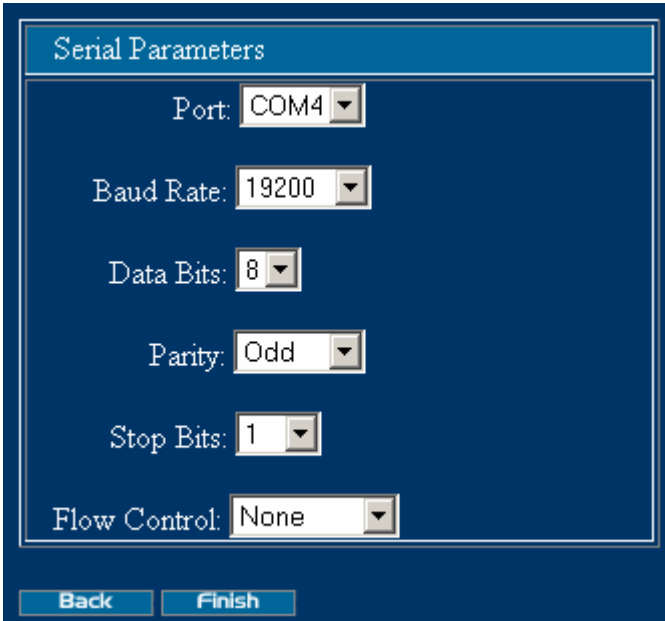


The following window is displayed:



With Web-Connect software, the virtual port should be viewed as an additional serial port. Standard settings can be carried over. Click “Next”.

The following window is displayed:



The image shows a 'Serial Parameters' dialog box with a dark blue background and white text. It contains several dropdown menus for configuration: 'Port' is set to 'COM4', 'Baud Rate' is '19200', 'Data Bits' is '8', 'Parity' is 'Odd', 'Stop Bits' is '1', and 'Flow Control' is 'None'. At the bottom, there are two buttons: 'Back' and 'Finish'.

The same settings must be selected as described in section 3: i.e. the same COM port number. The baud rate setting (e.g. 19200) is not relevant, as this parameter is disregarded. The other settings required are: 8 data bits, odd parity, 1 stop bit and no flow control.

When you click the "Finish" button, the following connection possibility is displayed:



By clicking "VSP for USB", it is now possible to establish a connection with the web server of a Saia[®] PCD via the virtual COM port. The following standard web page is displayed:

