
Saia PCD Supervisor Software Release Bulletin 4.14.0.162.2




supervisor
Saia PCD®

Contacts

Offering Management:

Dirk Speckhardt dirk.speckhardt@honeywell.com

Technical Support:

SBC Germany support.de@saia-pcd.com

SBC Austria support.at@saia-pcd.com

SBC Switzerland support.ch@saia-pcd.com

SBC International support@saia-pcd.com

SBC Italy support.it@saia-pcd.com

SBC France support.fr@saia-pcd.com

SBC BeNeLux support.bnl@saia-pcd.com

DATE: October 30th, 2024

CONTENTS

SUMMARY	4
IMPORTANT: JAVA MIGRATION	4
BACnet certification.....	4
NEW FEATURES / UPDATES	5
OPC-UA Encrypted & Signed Communication	7
Supported Optimizer Suite Hardware	7
PART NUMBERS	8
Saia PCD Supervisor basic license	8
Saia PCD Supervisor part numbers with S-Bus basic licenses	8
Saia PCD Supervisor part numbers with Node basic licenses	9
Saia PCD Supervisor upgrade licenses	9
SAIA PCD SUPERVISOR MAINTENANCE LICENSES	10
Saia PCD Supervisor maintenance upgrade for basic licenses	10
SAIA PCD SUPERVISOR ADDITIONAL DRIVER.....	11
Saia PCD Supervisor database drivers for external database applications.....	11
Saia PCD Supervisor Fidelio Driver	11
Saia PCD Supervisor JSON Driver	11
Saia PCD Supervisor HTTP Client Driver	12
Saia PCD Supervisor OpenADR Driver.....	12
Saia PCD Supervisor Alarm Console	12
Saia PCD Supervisor Video Driver.....	12
Saia PCD Supervisor LDAP	12
Saia PCD Supervisor LEGACY ORACLE	12
Saia PCD Supervisor ANALYTICS.....	13
Saia PCD Supervisor Energy Monitoring	13
Saia PCD Supervisor E-Signature.....	13
Saia PCD Supervisor Cloud	13
Saia PCD Supervisor Easy Healthy Building Dashboard	14
SAIA PCD SUPERVISOR ENGINEERING LICENSES	14
SAIA PCD SUPERVISOR SUPPORTING MATERIAL	15
Software downloads	15
How to order the licences?	15
PLATFORM REQUIREMENTS	16
KnxnetIp Module	17
Software Module Details	17
Compatibilities are as follows:	18
SUPPORTED WEB BROWSERS	20
SUPPORTED INFRASTRUCTURE	21

SYSTEM COMPATIBILITY	21
ISSUES AND SOLUTIONS	22
Resolved issues for this Release	22
Device Template login issue	22
Won't fix issues	24

SUMMARY

This bulletin is to announce the latest release of the Saia PCD Supervisor based on Niagara 4 technology.

If you install the version 4.14.0.162.2 you will benefit from:

- Migration of JAVA Runtime Engine (JRE) from Oracle to Azul
- Fixed issues as listed:
 - in section “Resolved Issues for this Release”
 - in “Niagara 4.14 Release Notes” available on support web page: <https://sbc-support.com/en/product-index/saia-pcd-supervisor/>
- New HTML5 Web Views
- BACnet Protocol Revision 16 Update
- Certificate Signing Service:
 - Individual and Combined Signing Requester
- Brick Schema Tag Dictionary
- Multi-Tiered Security Dashboard
- GAuth Enrollment Workflow
- New SAML Authentication Type Configuration
- Windows Authentication Mode for MS SQL
- Unit Test Public APIs

IMPORTANT: JAVA MIGRATION

SBC is migrating the JAVA Runtime Engine (JRE) from Oracle to Azul for Saia PCD Supervisor 4.14. This package cannot be used for commissioning and can only be used for monitoring (Supervisor – Only functionality).

With this version the OptimizerAdvanced controllers cannot be commissioned as the dist files of this controller are not released yet for the Saia PCD Supervisor 4.14.

Commissioned controllers can be transferred to the Supervisor at the higher version for monitoring purposes.

From 15 July 2024, all new licences will run Niagara 4.14 versions with only Azul features included in the licence. These new licences cannot be applied to older versions.

Engineering/Demo licences will need to be refreshed to run new versions of Niagara. Otherwise, they will remain unaffected.

BACnet certification

In the category of BACnet certifications, this release is related to Niagara Framework version - 4.3.58.22.11

- BACnet B-BC A-WS AS-B MOU-B
- Certifying to protocol revision 16

[See the listing here.](#)

NEW FEATURES / UPDATES

- New HTML5 Web Views - Engineer Niagara Stations through a web browser client and save time eliminates client module or brand dependencies, become client version agnostic, and connect immediately and safely over IT-friendly https.
- Driver Manager - Deploy multiple drivers to create interoperability between communication protocols and bring devices into a Niagara ecosystem to leverage everything the Framework has to offer.
- Niagara Network - Vendor agnostic communication protocol between Niagara Stations.
 - History Import & Export Managers - Archive data collection between stations.
 - Schedule Import & Export Managers - Schedule operation remotely across stations.
- BACnet Network - ASHRAE Standard 135 open communication protocol of choice for field devices.
 - Export Table - Serve up Niagara components as BACnet objects.
 - Schedule Import & Export Managers - Sync Niagara schedule components with intrinsic BACnet schedule objects.
 - History Import Manager - Import intrinsic BACnet trend log objects to collect in the Niagara History space.
- RDBMS Network (mysql, MSSQL, OracleDb) - Relational Database connections between stations and select 3rd party relational databases.
 - History Import & Export Managers - Import and Export Niagara History data to relational databases.
- NRIO Network - Connect a station operating on a JACE8, JACE9, or Edge10 to native Niagara Remote-I/O devices and operate equipment directly through Niagara.
 - Device Manager - Discover, configure, and add NRIO-16 and NRIO-34 devices to the station.
 - Point Manager - Discover, configure, and add I/O points to the station.
- Modbus Network (Async - Client/Server, TCP - Client/Server) - TCP and Serial based communications protocol commonly used with energy metering.
 - Device Manager - Discover, configure, and add Modbus Devices over TCP or serial-based connections to the station.
 - Point Manager - Discover, configure and add Modbus registers to the station.
- LonWorks Network - Echelon's networking platform communicating over FTT-10 twisted pair.
 - Device Manager - Discover, configure, manage, and add LonWorks devices to the station.
 - Router Manager - Discover, configure, and manage LonWorks routers from the station.
 - Link Manager - Establish and maintain network links within the LonWorks network.
 - Utilities Manager - Provides a suite of tools for maintenance and diagnostics of the LonWorks network.
 - Point Manager - Discover, configure and add LonWorks standard network variable types (or SNVTs) to the station.
- OnCall Service -
 - On Call List Manager - Organize and manage lists of personnel available for on-call duty
 - On Call Contact Manager - Maintain contact information and preferences for on-call staff
 - On Call User Report - Generate detailed reports on on-call activities and responses
 - Weather Service
- Weather Manager - Access and display current and forecasted weather conditions from National Weather Service stations.

- Current Weather & Air Quality - Monitor real-time weather and air quality data
 - Future Weather & Air Quality - Access forecasts for future weather and air quality conditions
- Category Service
 - Category Browser - Configure and manage authorization to station components by category.
- Niagara Provisioning
 - Job Builder - Create and customize provisioning jobs for managing Niagara stations at scale.
 - Job List - Keep track of all provisioning jobs in a centralized list.
 - Job Dialogs for: Add Station User, Backup Stations, Convert To Perpetual License Mode, Copy Supervisor File, Deploy Template, Enable Bootstrap Mode, Export Application Template Configuration, Export Certificate Signing Request, Import Signed Certificate, "Install a Signed Certificate for an Individual Service (Fox, Web, etc)", Install a Signed Certificate for Fox/Web/Platform to share, Install Application Template, Install Certificate, Install Clean Distribution, Install Software, Reboot, Remove Platform User, Remove Property, Remove Station User, Rename Device Station, Run Robot, Security Job Steps, Set Certificate Alias, Set Platform Credentials, Set Platform User Password, Set Property, Set Station Connection Credentials, Set Station User Password, Set System Passphrase, Set Time, Set TLS Level, Setup Reciprocal Connection, Sign Certificate, Update Connections Using Niagara Network Discovery, Update Connections Using Provisioning Station's DHCP Server, Update Licenses, Update Template or Application Configuration, Upgrade Application Template, Upgrade Out-of-date Software, Upgrade Template.
- BACnet Protocol Revision 16 Update - Update to the BACnet stack to conform with the requirements in protocol revision 16.
- Certificate Signing Service - New service that responds to Certificate Signing Requests (CSR) from requesting remote/local stations and will supply generated certificates signed by a requested CA certificate.
- Individual Signing Requester
- Combined Signing Requester for the following services;
 - Fox Service
 - Web Service
 - Platform (niagarad)
 - AWS device certificates
 - Provisioning Jobs for Deployment
- Brick Schema Tag Dictionary
- Multi-Tiered Security Dashboard - Enhancement to support reachable stations via Multi-Tiered SystemDB
- GAuth Enrollment Workflow
- New SAML Authentication Type Configuration
 - Includes Password, PasswordProtectedTransport, TimeSyncToken, SSL/TLS Certificate, Kerberos, Smartcard, Smartcard PKI, Unspecified
- Windows Authentication Mode for MS SQL
- Unit Test Public APIs
- Niagara Access - Refresh to Tridium's Enterprise Security Offering

OPC-UA Encrypted & Signed Communication

Signed & Encrypted Communication with the OPC-UA Driver (V 4.9.0.198) as Client and the PCD3.M6893 (Qronox-IEC-Controller) as OPC UA Server is established

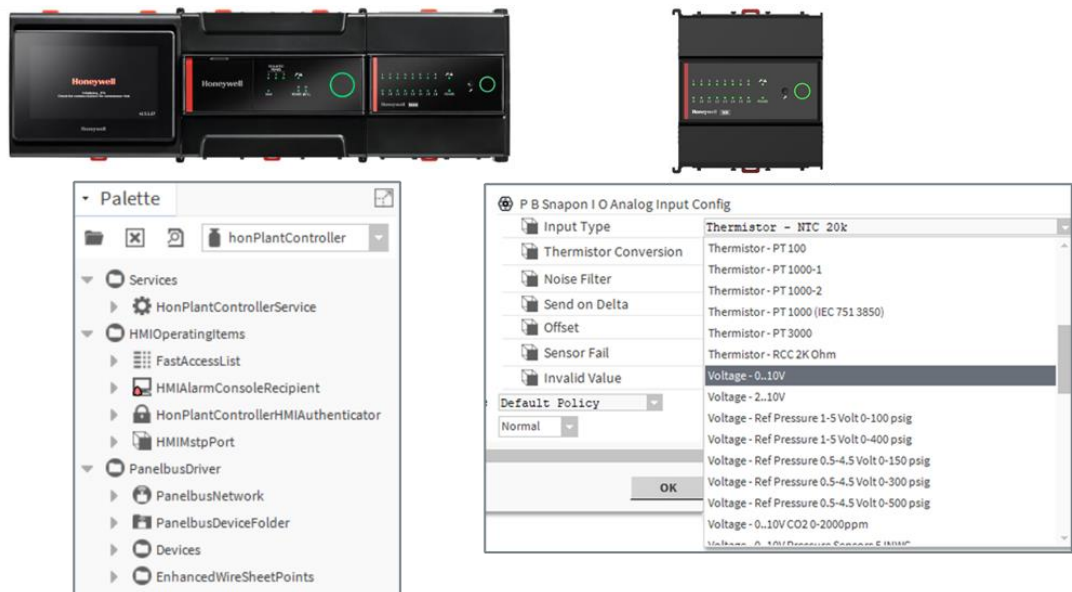


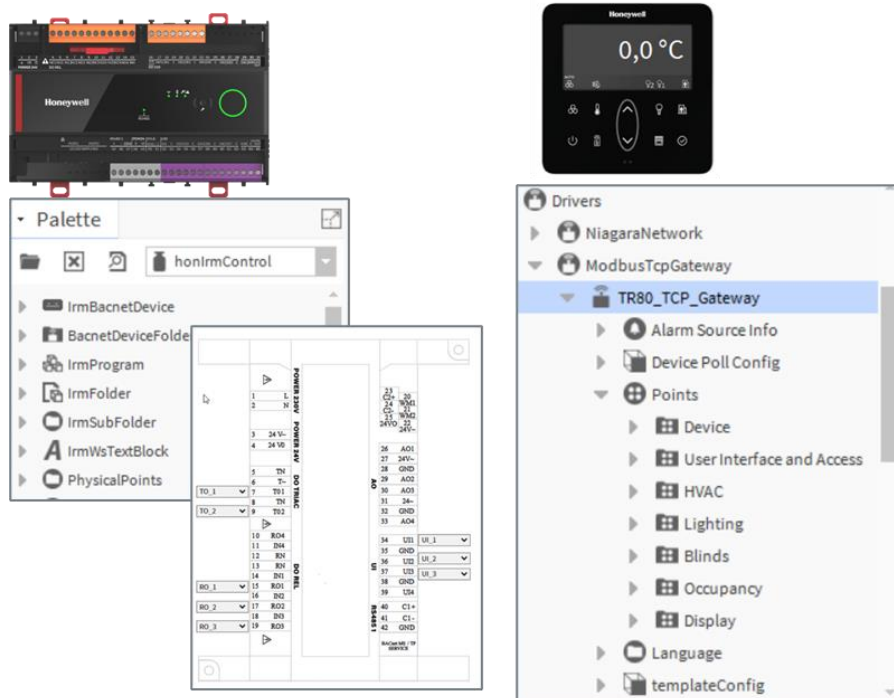
Supported Optimizer Suite Hardware

Optimizer Advanced Controller, I/O modules, Unitary Controller and Room control can be programmed or commissioned via Supervisor Workbench

Separate palettes and templates are available, secured by licence check

Automatic detection of connected IO modules





PART NUMBERS

Saia PCD Supervisor basic license

The Saia PCD Supervisor Basic license does not include data points but can be extended by additional S-Bus points, OPEN points or Nodes to establish communication to PCD Controller or other controller / via S-Bus or other protocols.

Part Number	License Key	Description
PCD8.SUP-BASIC	PCD8.SUP-BASIC	Supervisor no points

Saia PCD Supervisor part numbers with S-Bus basic licenses

The Saia PCD Supervisor S-Bus point licenses support import and connection to PCD Controller. All basic licenses can be extended by additional S-Bus points, OPEN points or Nodes to establish communication to other controller / via other protocols and Niagara based Controllers through FOX protocol. All the basic licenses contain an initial maintenance license of 18 month.

In order to purchase End-User licenses partner must also purchase an engineering license or already own a Tridium account for Saia PCD Supervisor (valid engineering licenses).

Part Number	License Key	Description
PCD8.SUP-500	PCD8.SUP-500	Supervisor 500 points
PCD8.SUP-2500	PCD8.SUP-2500	Supervisor 2500 points
PCD8.SUP-10000	PCD8.SUP-10000	Supervisor 10000 points
PCD8.SUP-25000	PCD8.SUP-25000	Supervisor 25000 points
PCD8.SUP-50000	PCD8.SUP-50000	Supervisor 50000 points
PCD8.SUP-100000	PCD8.SUP-100000	Supervisor 100000 points

Saia PCD Supervisor part numbers with Node basic licenses

The Saia PCD Supervisor Node licenses support import and connection to PCD Controller. All basic licenses can be extended by additional S-Bus points, OPEN points or Nodes to establish communication to other controller / via other protocols and Niagara based Controllers through FOX protocol. All the basic licenses contain an initial maintenance license of 18 month.

In order to purchase End-User licenses partner must also purchase an engineering license or already own a Tridium account for Saia PCD Supervisor (valid engineering licenses).

Part Number	License Key	Description
PCD8.SUP-1N	PCD8.SUP-1N	Supervisor 1 Node
PCD8.SUP-5N	PCD8.SUP-5N	Supervisor 5 Nodes
PCD8.SUP-10N	PCD8.SUP-10N	Supervisor 10 Nodes

Saia PCD Supervisor upgrade licenses

The basic licenses can be upgraded by any of the following point or Node upgrades. The basic licenses have no node connection activated.

The upgrades do not influence the maintenance extension licenses which always depend on the basic license.

Add S-Bus points (Communication via S-Bus driver)

Part Number	License key	Description
PCD8.SUP-100EXT	SUP-S100P	Add driver capacity 100 S-Bus points
PCD8.SUP-2500EXT	SUP-S2500P	Add driver capacity 2500 S-Bus points
PCD8.SUP-5000EXT	SUP-S5000P	Add driver capacity 5000 S-Bus points
PCD8.SUP-15000EXT	SUP-S15000P	Add driver capacity 15000 S-Bus points
PCD8.SUP-50000EXT	SUP-S50000P	Add driver capacity 50000 S-Bus points

Add OPEN points (Communication via BACnet IP, LON, KNX-IP, M-bus, Modbus TCP, oBiX, SNMP, etc but not S-Bus)

Part Number	License key	Description
PCD8.SUP-500OPEN	SUP-DEVICE-10	Add driver capacity 500 OPEN points
PCD8.SUP-2500OPEN	SUP-DEVICE-50	Add driver capacity 2500 OPEN points
PCD8.SUP-5000OPEN	SUP-DEVICE-100	Add driver capacity 5000 OPEN points
PCD8.SUP-10000OPEN	SUP-DEVICE-200	Add driver capacity 10000 OPEN points
PCD8.SUP-25000OPEN	SUP-DEVICE-500	Add driver capacity 25000 OPEN points
PCD8.SUP-50000OPEN	SUP-DEVICE-1000	Add driver capacity 50000 OPEN points

Add Node connections (Communication through FOX protocol to any other Niagara based system)

Part Number	License key	Description
PCD8.SUP-1N-UP	SUP-UP-1	Upgrade Supervisor connectivity by 1
PCD8.SUP-10N-UP	10x SUP-UP-1	Upgrade Supervisor connectivity by 10

SAIA PCD SUPERVISOR MAINTENANCE LICENSES

To benefit from further maintenance and upgrade features after the initial maintenance license of the basic point/node license is expired, you can purchase one of the following maintenance extensions shown in the next tables.

If you do not purchase a maintenance extension, the supervisor will continue to run but you will not be able to update your software with maintenance releases.

This means that the maintenance extensions are cumulative and always start at the point in time, where the previous maintenance extension ends. If you purchase further maintenance extensions after you have a gap in your maintenance period, the maintenance extension will fill these gaps.

Example:

Your initial maintenance is expired for 3 years.

- Now you buy a maintenance extension of 5 years.
 - Your 3 years gap is filled and you benefit another 2 years of maintenance updates.
- If you immediately add another maintenance extension of 1 year.
 - You will benefit of another 3 years of maintenance updates.

Saia PCD Supervisor maintenance upgrade for basic licenses

To benefit from further maintenance and upgrade features after the initial maintenance license (18 months) of the basic license is expired, you can purchase one of the following maintenance extensions. The maintenance licenses are always linked to the initially purchased basic version.

Part Number	License key	Description
PCD8.SUP-MNT1	SUP-0-SMA-1YR	Point license maintenance upgrade, additional 1 year
PCD8.SUP-MNT3	SUP-0-SMA-3YR	Point license maintenance, additional 3 years
PCD8.SUP-MNT5	SUP-0-SMA-5YR	Point license maintenance, additional 5 years
PCD8.SUP-MNT1-1	SUP-1-SMA-1YR	Node license maintenance upgrade, additional 1 year
PCD8.SUP-MNT3-1	SUP-1-SMA-3YR	Node license maintenance upgrade, additional 3 years
PCD8.SUP-MNT5-1	SUP-1-SMA-5YR	Node license maintenance upgrade, additional 5 years
PCD8.SUP-MNT1-10	SUP-10-SMA-1YR	Node license maintenance upgrade, additional 1 year
PCD8.SUP-MNT3-10	SUP-10-SMA-3YR	Node license maintenance upgrade, additional 3 years
PCD8.SUP-MNT5-10	SUP-10-SMA-5YR	Node license maintenance upgrade, additional 5 years

SAIA PCD SUPERVISOR ADDITIONAL DRIVER

The basic licenses can be upgraded by any of the following additional driver to extend the communication and feature of Saia PCD Supervisor.

Saia PCD Supervisor database drivers for external database applications

Part Number	License key	Description
PCD8.SUP-DB-MYSQL	DR-S-DB-MYSQL	Driver for MYSQL database
PCD8.SUP-DB-ORCL	DR-S-DB-ORCL	Driver for ORCL 11G database
PCD8.SUP-DB-SQL	DR-S-DB-SQL	Driver for SQL database
PCD8.SUP-DB-CSV	DR-S-DB-CSV	Driver for CSV database

Saia PCD Supervisor Fidelio Driver

Part Number	License Key	Description
PCD8.SUP-FID	DR-MFID	Fidelio driver for Saia PCD Supervisor

Saia PCD Supervisor JSON Driver

Part Number	License Key	Description
PCD8.SUP-JSON	DR-S-JSON	JSON driver for Saia PCD Supervisor

Saia PCD Supervisor HTTP Client Driver

Part Number	License Key	Description
PCD8.SUP-HTTP	DR-S-HTTP	HTTP client driver for Saia PCD Supervisor

Saia PCD Supervisor OpenADR Driver

Part Number	License Key	Description
PCD8.SUP-OpenADR	DR-S-OADR	VEN Supervisor Driver for OpenADR 2.0 for Saia PCD Supervisor

Saia PCD Supervisor Alarm Console

Part Number	License Key	Description
PCD8.SUP-ALM-PTL	PCD8.SUP-ALM-PTL	Saia PCD Supervisor alarm portal

Saia PCD Supervisor Video Driver

Part Number	License Key	Description
PCD8.SUP-MLS-16	DR-S-MLS-16	Milestone 16 camera devices
PCD8.SUP-MAXP-16	DR-S-MAXP-16	MaxPro 16 camera devices
PCD8.SUP-AXIS-16	DR-S-AXIS-16	Axis 16 camera devices

Saia PCD Supervisor LDAP

Part Number	License Key	Description
PCD8.SUP-LDAP	DR-S-LDAP	LDAP DB Int, Supervisor Card holder DB

Saia PCD Supervisor LEGACY ORACLE

Part Number	License Key	Description
PCD8.SUP-LEG-ORCLJ	LEGACY-JRE	LEGACY-JRE Oracle license option

Saia PCD Supervisor ANALYTICS

Part Number	License key	Description
PCD8.SUP-NA-250	NA-S-N4-250	250 analytics points
PCD8.SUP-NA-1000	NA-S-N4-1000	1000 analytics points
PCD8.SUP-NA-10000	NA-S-N4-10000	10000 analytics points

Saia PCD Supervisor Energy Monitoring

Part Number	License key	Description
PCD8.SUP-EM25	PCD8.SUP-EM25	Base license with max. 25 meter points
PCD8.SUP-EM50EXT	PCD8.SUP-EM50EXT	Additional 50 meter points
PCD8.SUP-EM100EXT	PCD8.SUP-EM100EXT	Additional 100 meter points
PCD8.SUP-EM500EXT	PCD8.SUP-EM500EXT	Additional 500 meter points
PCD8.SUP-EM1KEXT	PCD8.SUP-EM1KEXT	Additional 1000 meter points
PCD8.SUP-EM5KEXT	PCD8.SUP-EM5KEXT	Additional 5000 meter points
PCD8.SUP-EMWEAT-1	EM-ML-WEATHER-1	Energy Manager add 1 weather location

Saia PCD Supervisor E-Signature

Part Number	License Key	Description
PCD8.SUP-ESIG-1000	ESIGN-S-N4-1000	E-Signature 1000 sec. points - FDA 21 CFR part 11
PCD8.SUP-ESIG-UP1K	ESIGN-S-N4-UP-1000	E-Signature add 1000 sec. points - FDA 21 CFR part 11
PCD8.SUP-ESIG-UNL	ESIGN-S-N4-UNL	E-Signature unlimited sec. points - FDA 21 CFR part 11

Note: E-Signature is working with all standard Niagara points using only Proxy Extension. If additional connection will be used as for example the virtuals E-Signature will not support.
 -> No support for BACnet utilities (Native BACnet is supported)

Saia PCD Supervisor Cloud

Part Number	License Key	Description
PCD8.SUP-CLO-500	DR-NCLOUD-SEN500	Niagara cloud sentience 500 points
PCD8.SUP-CLO-2500	DR-NCLOUD-SEN2500	Niagara cloud sentience 2500 points
PCD8.SUP-CLO-10000	DR-NCLOUD-SEN10000	Niagara cloud sentience 10000 points

Saia PCD Supervisor Easy Healthy Building Dashboard

Part Number	License Key	Description
PCD8.SUP-HBDS1	HBDS1	2 zones 1 year
PCD8.SUP-HBDM1	HBDM1	5 zones 1 year
PCD8.SUP-HBDE1	HBDE1	Unlimited zones 1 year
PCD8.SUP-HBDS3	HBDS3	2 zones 3 years
PCD8.SUP-HBDM3	HBDM3	5 zones 3 years
PCD8.SUP-HBDE3	HBDE3	Unlimited zones 3 years

SAIA PCD SUPERVISOR ENGINEERING LICENSES

PCD8.SUP-NAA-ENG is the license to enable the Saia PCD Supervisor engineering software. The engineering license is required once per “workstation” (engineer’s PC).

Prerequisite for a running engineering license is that each company has bought the system integrator license (PCD8.SUP-NAA-REN / PCD8.SUP-NAA-MON) and renews this license every year before November 30th. All the present engineering licenses will be renewed by ordering the yearly license fee PCD8.SUP-NAA-REN.

This means: Every company needs:

- 1x PCD8.SUP-NAA-REN (per company and year)
- 1x PCD8.SUP-NAA-ENG for every new engineer’s workplace PC (one-time payment; renewals covered by PCD8.SUP-NAA-REN)

Part number	License Key	Description
PCD8.SUP-NAA-STK5	SUP-RENCON + 5 x SUP-DEMO	Starter kit with 5 engineering licenses
PCD8.SUP-NAA-STK1	SUP-RENCON + 1 x SUP-DEMO	Starter kit with 1 engineering license
PCD8.SUP-NAA-REN*	SUP-RENCON	Engineering tool annual license fee; If customers with existing Niagara Central accounts order this part, all their existing engineering licenses will be renewed, but they will not get additional ones. For additional licenses they will have to order SUP-DEMO
PCD8.SUP-NAA-MON*	SUP-MONTHCON	Engineering tool monthly license fee. Attention: you must purchase SUP-DEMO for every engineering PC. This part can be ordered only for new Niagara Central accounts. Users which already have an account but have not renewed it cannot purchase the monthly license
PCD8.SUP-NAA-ENG	SUP-DEMO	Engineering license

* for first order you must order PCD8.SUP-NAA-ENG in addition

Order examples:

Example a) 2 Engineering Licenses for 3 months:

2x PCD8.SUP-NAA-ENG + 3x PCD8.SUP-NAA-MON

Example b) 2 Engineering Licenses for 12 months:

1x PCD8.SUP-NAA-STK1 + 1x PCD8.SUP-NAA-ENG

Example c) 6 Engineering Licenses for 12 months:

1x PCD8.SUP-NAA-STK5 + 1x PCD8.SUP-NAA-ENG

The annual agreement allows partners also to get the additional support from SBC (training and technical) to ensure they can operate with the Saia PCD Supervisor.

At the renewal time (30th November each year), all existing engineering licenses will be checked for validity and revoked as applicable.

Transferring licenses from one PC to another without providing the original serial code / Host-ID will require the purchase of a new license.

Licenses will be linked to named individuals

SAIA PCD SUPERVISOR SUPPORTING MATERIAL

Software downloads

Software files can be found on the SBC support page in section Saia PCD Supervisor <https://sbc-support.com/en/product-index/saia-pcd-supervisor/>

How to order the licences?

Licences can be ordered via SBC Order Management (In case of any questions contact your local sales partner).

The software then has to be installed on the PC on which it will also be used in future, since a unique host ID is created when the installation is started. To obtain the licence key, the customer has to provide Order Management with this host ID along with necessary information such as company/project name.

When an unlicensed installation of Saia PCD Supervisor is run you will be prompted to email certain details to Saia Burgess Controls in order for them to provide the relevant license and certificate files.

Runtime license and order codes for end user

Licence model and order codes for end users

Basic package		
PCD8.SUP-BASIC	0 node	0 point
Basic S-Bus packages		
PCD8.SUP-500	Including	500 points
PCD8.SUP-2500	Including	2,500 points
PCD8.SUP-10000	Including	10,000 points
PCD8.SUP-25000	Including	25,000 points
PCD8.SUP-50000	Including	50,000 points
PCD8.SUP-100000	Including	100,000 points
S-Bus extensions		
PCD8.SUP-100EXT	Extensions	100 points
PCD8.SUP-2500EXT	Extensions	2,500 points
PCD8.SUP-5000EXT	Extensions	5,000 points
PCD8.SUP-15000EXT	Extensions	15,000 points
PCD8.SUP-50000EXT	Extensions	50,000 points
OPEN points extensions BACnet IP, EIB/KNX IP, LON IP, Modbus IP, M-Bus IP, SNMP, OPC		
PCD8.SUP-500OPEN	Extension	500 points
PCD8.SUP-2500OPEN	Extension	2,500 points
PCD8.SUP-5000OPEN	Extension	5,000 points
PCD8.SUP-10000OPEN	Extension	10,000 points
PCD8.SUP-20000OPEN	Extension	25,000 points
PCD8.SUP-50000OPEN	Extension	50,000 points
Extensions with Nodes		
PCD8.SUP-1N-UP	Extension	1 node
PCD8.SUP-10N-UP	Extension	10 nodes

Extensions	
PCD8.SUP-DB-CSV	Microsoft Excel connection
PCD8.SUP-DB-MYSQL	MySQL data base connection
PCD8.SUP-DB-ORCL	Oracle data base connection
PCD8.SUP-DB-SQL	SQL data base connection
Maintenance contracts	
PCD8.SUP-MNT1	Maintenance for 1 additional year
PCD8.SUP-MNT3	Maintenance for 3 additional years
PCD8.SUP-MNT5	Maintenance for 5 additional years
Partner license agreements	
PCD8.SUP-NAA-MON	Monthly account agreement*
PCD8.SUP-NAA-STK1	Annual account agreement including 1 engineering license
PCD8.SUP-NAA-STK5	Annual account agreement including 5 engineering licenses
PCD8.SUP-NAA-REN	Annual account agreement / renewal
PCD8.SUP-NAA-ENG	1 additional engineering license**
Additional Drivers	
We offer many more drivers, please refer the Saia PCD Supervisor Data sheet (34-001).	

* PCD8.SUP-NAA-MON licenses can only be purchased by new partners. You must always purchase as many monthly licenses as you need for the period until November 30th. After November 30th, account can be renewed for 1 year with the PCD8.SUP-NAA-REN license.
** PCD8.SUP-NAA-ENG licenses can only be purchased for an active account.

PLATFORM REQUIREMENTS

Processor	Core i5-3470 3.2GHz Quad-Core minimum
Operating System	Windows 10/11, 64-bit recommended. CentralLine NX supports the latest Microsoft operating systems and can run on virtual environments. For more information on the Platform requirements, refer to the Niagara 4 Framework Installation Guide Attention: Copy the link into your browser, if the first click does not lead you directly to the desired page. You will have to sign up
Memory	8 GB minimum, 16 GB or more recommended for Win 64-bit version
Hard Drive	250 GB minimum free space 500 GB for applications that need more archiving capacity
Display	Video card and monitor capable of displaying 1024 x 768 pixel resolution or greater
Network Support	Ethernet adapter (10/100 Mb with RJ-45 connector)
Connectivity	Full time high speed ISP connection recommended for remote site access (e.g. T1, ADSL, cable modem)

Knxnetlp Module

The KNX decentralized, distributed network protocol manages building controls, such as HVAC and lighting systems. The Niagara Framework® KNX driver models devices that conform to the KNX protocol standard.

Software Module Details

Tools	Module	Description	Version
Knxnetlp	docKnxnetlp-doc	Tool for converting Station files from EIB driver to KNX driver	4.13.2.18
	knxnetlp-rt		4.13.9.2
	knxnetlp-wb		4.13.9.2
	knxStationConverter-wb		4.13.9.2

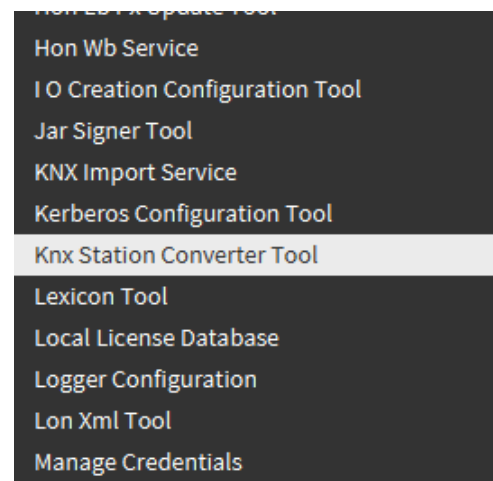
Note: EIBnet modules are no longer in the setup (which already has been the case for a few years) and has been replaced by the knxnetlp modules.

The EIBnet to KNXnet migration tool is available on PARTNERweb together with this SRB.

For version dependencies, refer to the [Niagara community](#).

To run the tool:

1. Add the conversion tool knxStationConverter-wb.jar to modules on the pc and restart the workbench.
2. If the station is on an EAGLEHAWKNX/HAWK, copy to the local host using the station copier as per usual.
3. In the workbench, go to **Tools > Knx Station Converter Tool**.



4. Pick the name of the station you wish to convert.



5. The tool will now be complete. A copy of the station will be created in the workbench stations folder, with the _Knx suffix.
6. Viewing the new _knx station copy offline, you will observe that the EiblpNetwork will have been replaced with a

7. KnxnetIpNetwork, and child devices, proxy extensions, and various slots will have been altered/renamed to conform with the KNX driver.
7. Rename and copy back to the remote controller, ensuring that the knxnetIp driver modules are also in place on the controller before starting the station.

Compatibilities are as follows:

KnxnetIp Version Matrix

Knx Version	Description	Date	3.8	4.3	4.4	4.6	4.7	4.8	4.9	4.10	4.11	4.12	4.13	4.14
.4	Few bug fixes	Aug-17	✓	✓	-	-	-	-	-	-	-	-	-	-
.5	Internal version released to select customers to address ETS project xml format 14	Mar-18	✗	✓	?	-	-	-	-	-	-	-	-	-
.6	~10 bug fixes and enhancements	Jul-18	✓	✗	✓	✓	✓	-	-	-	-	-	-	-
.7	Internal version released to select customers to address ETS project xml format 20 and to fix an urgent memory leak	May-19	✓	✗	✓	✗	✓	✓	-	-	-	-	-	-

Knx Version	Description	Date	3.8	4.3	4.4	4.6	4.7	4.8	4.9	4.10	4.11	4.12	4.13	4.14
.8	~25 bug fixes and enhancements	Mar-20	✗	✗	✓ 4.4.1.8	✗	✓ 4.7.1.8	✓ 4.8.8	-	-	-	-	-	-
Patch	Workbench Only, Point Manager cell colours	Apr-20	✗	✗	✓ 4.4.1.8.1	✗	✓ 4.7.1.8.1	✓ 4.8.8.1	✓ 4.9.8.2	✓ 4.10.8.2	-	-	-	-
Patch	Ignore NullPointer on import	Jul-21	✗	✗	✗	✗	✗	✗	✓ 4.9.8.4	✓ 4.10.8.4	✓ 4.11.8.4	-	-	-
.9	ETS5.7.7 & ETS6 support	May-22	✗	✗	✗	✗	✗	✗	✗	✓ 4.10.9.4	✓ 4.11.9.4	-	-	-
Patch	Import projects with area/line xml elements which do not have name attribute	Sep-22	✗	✗	✗	✗	✗	✗	✗	✓ 4.10.9.6	✓ 4.11.9.6	✓ 2.12.9.4	-	-
Patch 2	ETS 6.1 support	Jul-23	✗	✗	✗	✗	✗	✗	✗	✓ 4.10.9.8	✗	✓ 4.12.9.6	-	-
Patch 3	Experimental Thread Priority during Station Save	Jul-23	✗	✗	✗	✗	✗	✗	✗	✓ 4.10.9.10	✗	✓ 4.12.9.8	✓ 4.13.9.2	-
Patch 4	ETS 6.2 support	Mar-24	✗	✗	✗	✗	✗	✗	✗	✓ 4.10.9.16	✗	✗	✓ 4.13.9.14	✓ TBC

ETS Project version support

ETS Version (XML Version)	First supported KNX Driver version	Since
(11)	?	?
(13)	4.3.x.1.4	Aug - 2017
ETS 5.6 (xml v14)	4.3.x1.5	March - 2018
ETS 5.7 (xml v20)	3.8.7 / 4.4.7 / 4.7.7 / 4.8.7	May - 2019
ETS 6 (xml v21)	4.10.9.4 / 4.11.9.4 / 4.12.9.x	May - 2022
ETS 6.1 (xml v22)	4.10.9.8 / 4.12.9.6 / 4.13.9.x	July - 2023

SUPPORTED WEB BROWSERS

Use a latest version HTML5-capable web browser, such as those shown in the following table.

<https://docs.niagara-community.com/bundle/docN4Install/page/SupportedWebBrowsers-N4Install.html>

For best result we recommend the current version of Google Chrome.

Web browser	Niagara 4.10	Niagara 4.11	Niagara 4.12	Niagara 4.13	Niagara 4.14
Google Chrome (mobile, tablet, desktop)	Yes	Yes (v85)	Yes (v85)	Yes (v85)	Yes (v125)
Mozilla Firefox	Yes	Yes (v81)	Yes (v81)	Yes (v81)	Yes (v126)
Microsoft Edge	Yes	Yes (v85)	Yes (v85)	Yes (v85)	Yes (v125)
Microsoft Internet Explorer	No	No	No	No	No
Safari on iOS (mobile, tablet)	Yes	Yes (v13.1)	Yes (v13.1)	Yes (v14)	Yes (v15)
Java Web Start	No	No	No	No	No
Niagara Web Launcher	Yes	Yes	Yes	Yes	Yes
Chrome on Android (v85)	No	Yes	Yes	Yes	Yes

NOTE: The following browsers do not support the WbApplet (Wb Web Profile):

- Google Chrome version 45 and higher
- Microsoft Edge
- Firefox version 42 and higher
- Opera

SUPPORTED INFRASTRUCTURE

SUPPORTED OPERATING SYSTEMS		SUPPORTED DATABASES	SUPPORTED BROWSERS
Windows 10 64-bit	Virtual Machine	SQL Database	Browser
Professional / Enterprise	VMware ESXi 6.7	MySQL Server 8.0	Chrome (v85)
Windows 11	Mobile	(mysql-connector-java-8.0.24)	Firefox (v81)
Windows Server 2016	iOS 12	MS SQL Server 2016 (v13)	Microsoft Edge (v85)
Windows Server 2019	iOS 13	MS SQL Server 2017 (v14)	Web Launcher
Windows Server 2022	Android 8 (Oreo)	MS SQL Server 2019 (v15)	Mobile Browser
	Android 9 (Pie)	SQL Database	Safari on iOS (v13.1)
	Android 10 (Queen Cake)	Oracle 12c.1/2	Chrome on Android (v85)
		Oracle 18c	
		Oracle 19c LTS	
		Niagara SystemDB	
		Orient v3	

New Additions shown in Bold

SYSTEM COMPATIBILITY

Saia PCD Supervisor allows the direct connection of PCD controllers supporting Ether-S-Bus protocol. Serial S-Bus (RS485) devices can only be connected via a PCD gateway station.

Old PCD CPUs like PCS1, PCD1.M1, PCD2.M1 cannot be connected via Ether-S-Bus, but via Gateway

PG5 is support from Version 2.1 upwards

honUtilityIntTime modules available separate on support page (Needed to read/write register in time format -> Display register as time)

ISSUES AND SOLUTIONS

Resolved issues for this Release

This list shows issues solved by SBC R&D team, additional fixes from Tridium are display in "Niagara_4.14 Release Notes.pdf" available through Support page.

GALEO-79963	SBC 4.14 - dependency error while accessing lexicon tool.
GALEO-79962	SBC 4.14 - Letter 'R' is missing in Application Name in Windows Application Wizard

Device Template login issue

Issue:

Login after auto logout/server restart does display last page without the deviceTemplate menu, after login when an auto logout, restart of the station or restart of the web server has occurred.

The reason for this is, that the Niagara web server sets a cookie called "niagara_origin_uri" with the latest visited ord.

This cookie is valid until page is closed or reloaded and the deviceTemplate cannot prevent this from happening.

Workaround:

The "niagara_origin_uri" is not set if Same Site option is configured to "none" in a Secure context.

Niagara

1. Go to "Station -> Config -> Services -> WebService"
2. Set the Option "Same Site" to "None"
3. Make sure HTTPS is active

Browsers

Clear all cookies at least for the Niagara webpage.

Note: You must connect via HTTPS to the Niagara web server, if not the solution may not work, or the page is may not working.

This will only have accomplished with latest or higher web browser versions as listed below:

Mobile:

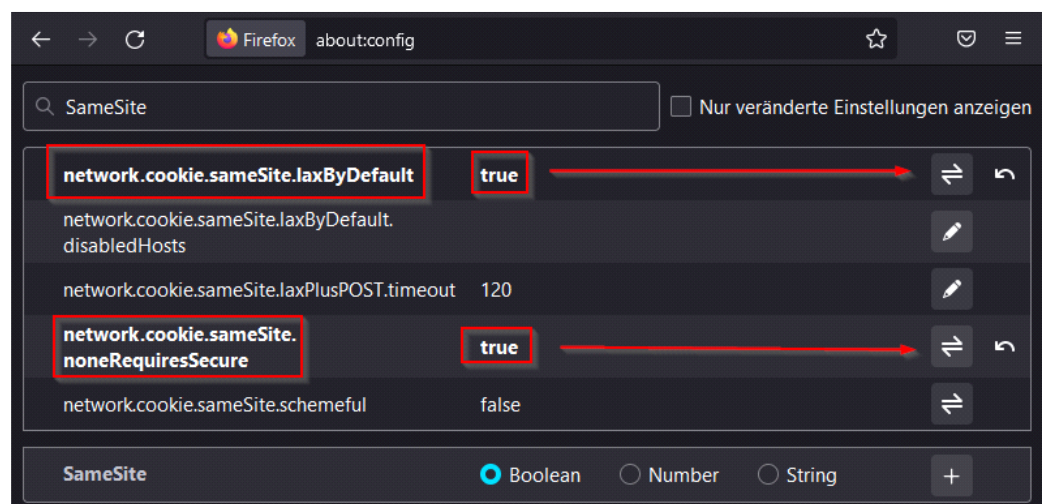
- WebView Android v80
- Chrome Android v80
- Firefox Android (Not Supported!)
- Opera Android v60
- Safari on iOS (Not Supported!)
- Samsung Internet v13

PC:

- Chrome v80
- Edge v86
- Internet Explorer (Not Supported!)
- Opera v71
- Safari (Not Supported!)
- Firefox v69*

*Note: Firefox on PC has not yet set the option "Secure require" from the "SameSite=None" attribute by default (Will be default in future versions).

1. It need to be configured by type in into the address bar: "about:config"
2. Search for "SameSite".
3. Set "network.cookie.sameSite.laxByDefault" to true.
4. Set "network.cookie.sameSite.noneRequiresSecure" to true



Won't fix issues

Because of technical reasons it is not possible to get a fix for the following issues:

GALEO-80011	SBC 4.14 - HondatapointView is not loading properly in Workbench but works in browser properly. restart of station resolves it.
GALEO-80010	SBC 4.14 - HondatapointView - Save button is hidden even after performing changes in the parameter on workbench. but it works.
GALEO-80009	SBC 4.14 - Observed severe error in Station log while using Easy Database Manager.
GALEO-80008	SBC 4.14 - Observed warning in station log while using SBC offline engineering tool.