



PG5 Starter Training
PG5 Core Installation

Daniel Ernst | EN02 | 2013-02-11

PG5 Installation Content

PC check

- What operating system has been installed?
- Has Java been installed?

Software installation

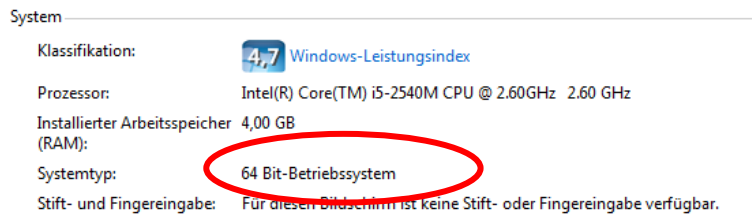
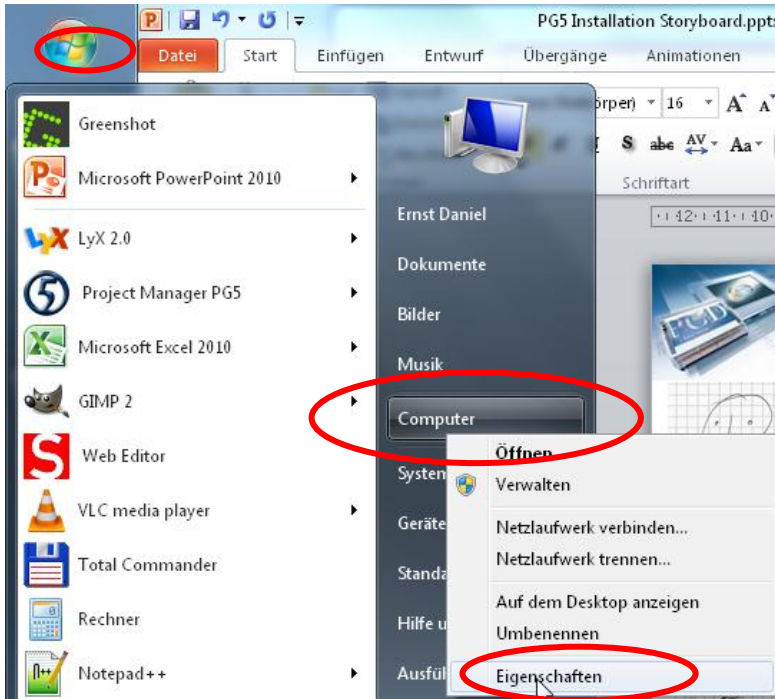
- Microsoft .Net Framework 4.0
- Microsoft Office Access database engine 2007
- Install Java and Java settings
- Java settings
- PG5 2.1 installation

PG5 Installation

Check operating system version

Find out whether Windows is a 32 or 64 bit system

- In Start menu, right click on Computer and Properties



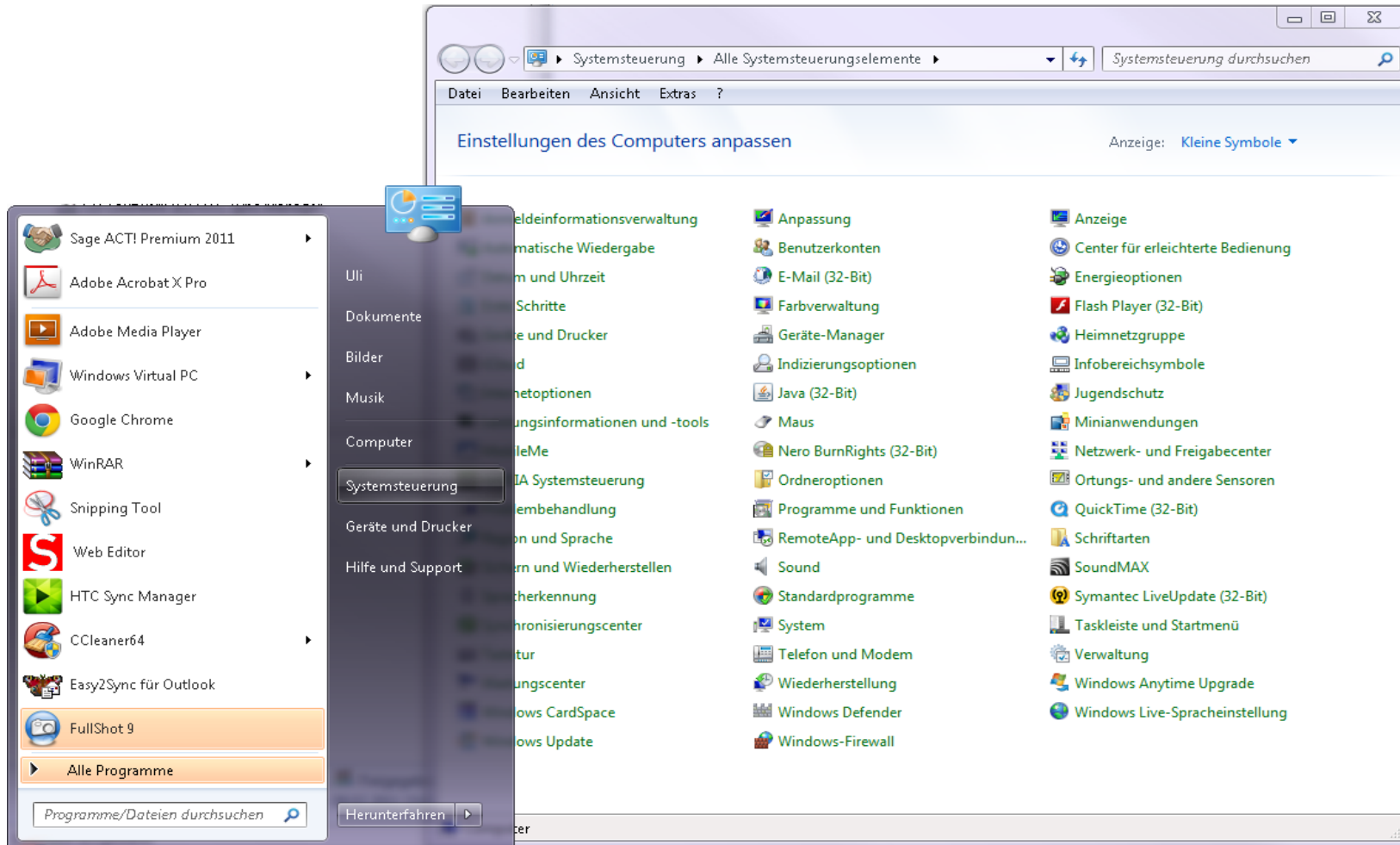


PG5 Installation

Has Java been installed?

Find out whether Java has been installed on the PC.

- In Start menu, double click on System controller





PG5 Installation

Installation .Net Framework 4.0

The .Net Framework 4.0 must be installed for use of PG5 2.1.xxx

Download Microsoft .Net Framework 4.0:
<http://www.microsoft.com/net/download>

Carry out installation

What is the .NET Framework?

- The .NET Framework (DOTNET framework) is a modern Microsoft development platform for software applications.
- .NET aims to create a modern, flexible environment for software development.
- PG5 2.1 requires the latest version of the .Net Framework.
- During installation of the operating system, this is not included in the installation package.

Previous .NET Version



For the desktop

Install from the web:

- [.NET Framework 4 Client Profile >](#)

Download and install:

- [.NET Framework 4 Client Profile for x86 >](#)
- [.NET Framework 4 Client Profile for x86 & x64 >](#)



PG5 Installation

Java installation

Java is necessary to enable a web project to display FireFox in Internet Explorer.

Skip this installation step if the check described under 1.b) shows that Java is already installed.

Download program:

<http://www.java.com/de/>

Run the installation

What is Java?

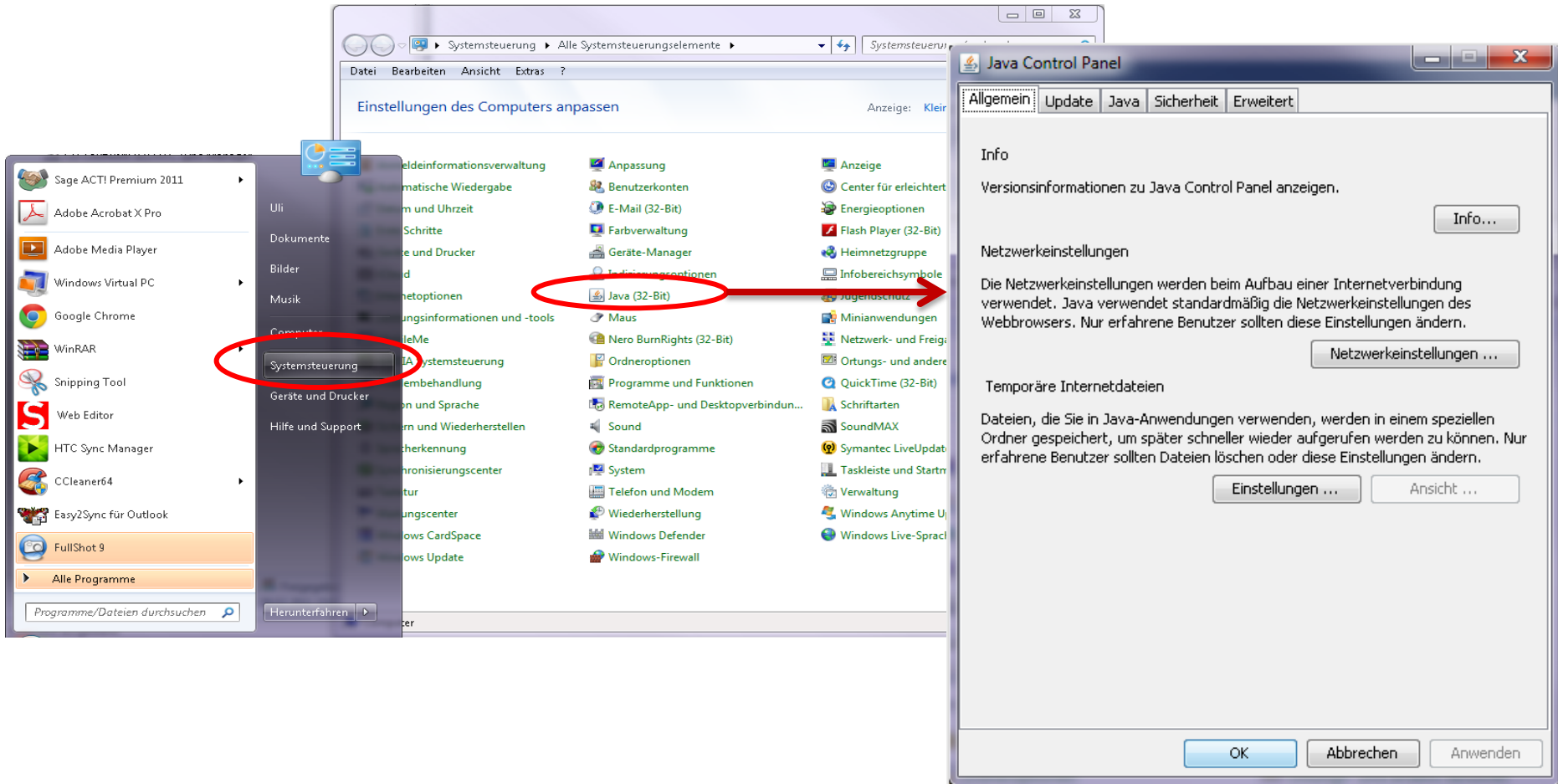
- The aim of this virtualization is platform independence:
- The program is designed to run without modification on any computer architecture that has a suitable runtime environment installed. Oracle itself provides runtime environments for the operating systems Linux, Solaris and Windows.

PG5 Installation

Adjust Java settings

Open Java settings.

- In Start menu, double click on Control Panel
- In the Adjust Computer Settings window, double click on the Java icon.

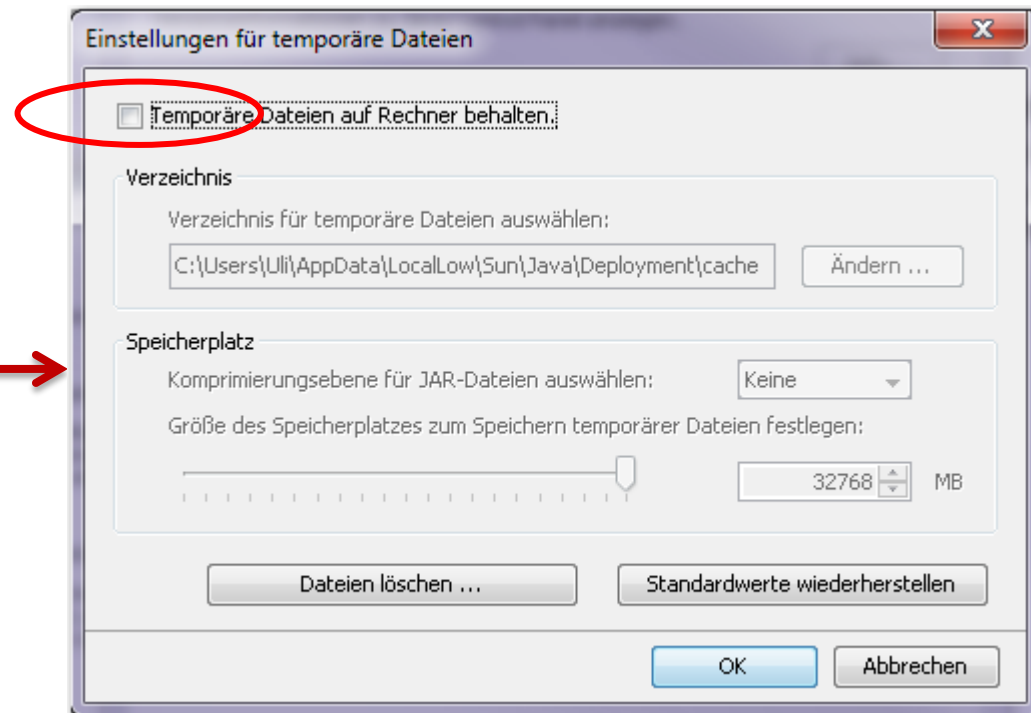
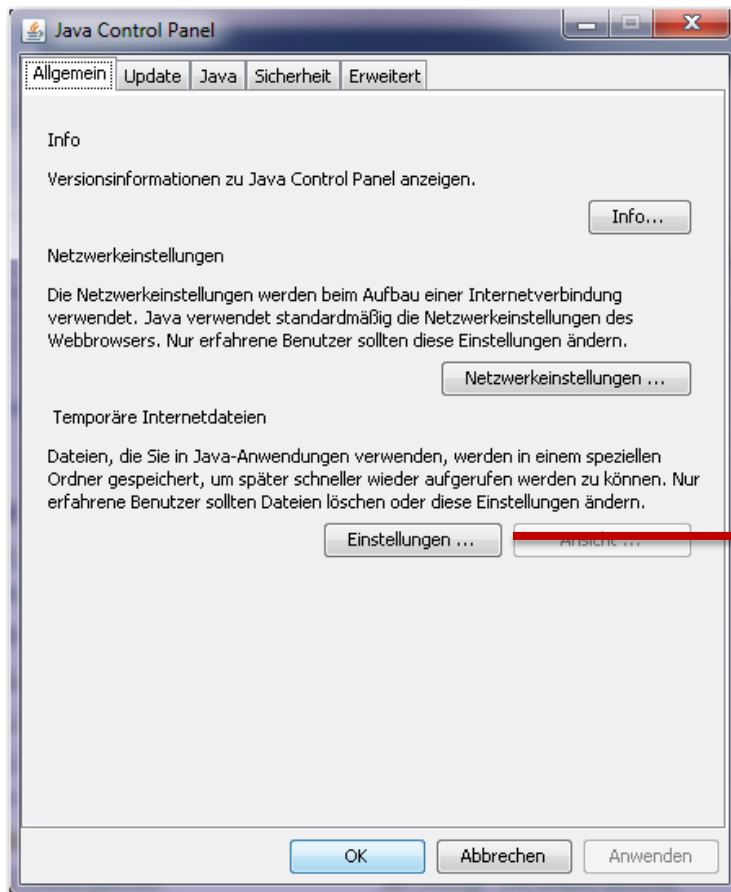


PG5 Installation

Adjust option temporary internet files

Open temporary settings.

- Click on the Settings button
- Click on the checkbox beside «Keep temporary files on computer»; i.e. deactivate.
- The checkbox should be empty.



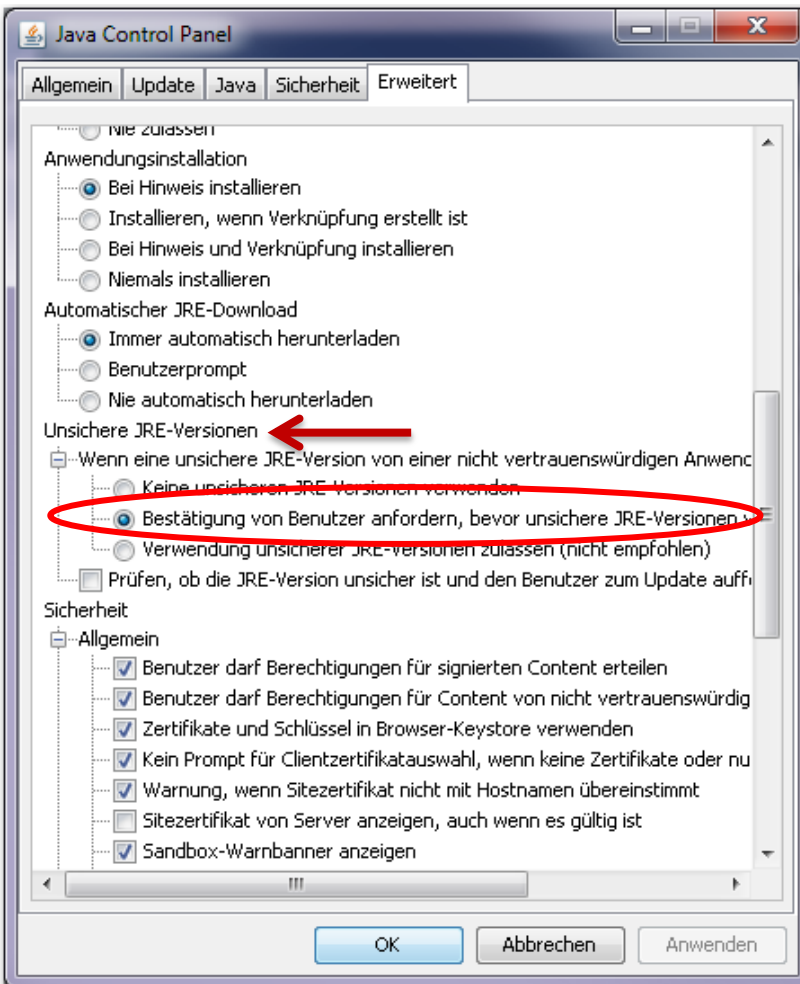


PG5 Installation

Adjust unsecured JRE version

Open Advanced.

- Scroll until «Unsecured JRE versions» is displayed
- Click on the circle next to the line «Request confirmation from user,»
- Confirm with OK button.





PG5 Installation

PG5 2.1 installation

PG5 2.1.xxx can be installed on the following operating systems:

- Win XP x32 and x64,
- Windows 7 x32 and 64,
- Windows 8

PG5 2.1 can be installed parallel with PG5 2.0

PG5 Installation

Software packages required

The following software packages should be installed:

- Saia Update Manager
- Programming Tool PG5
- Firmware Downloader
- Online Tools
- SD Flash Explorer
- Web Editor 5

