



Installation Guide PG5 V 2.1

Contents

1	<i>DVD for Saia PG5® Suite</i>	3
1.1	Getting Started	3
1.2	Documentation available with this DVD	3
2	<i>PG5 2.1 installation and compatibility</i>	3
2.1	Minimum computer requirements	3
2.2	Prerequisites	3
2.3	Compatibility with old Windows operating systems	4
2.4	Setups 32 and 64 bits	4
2.5	Firmware version - COSinus	4
2.6	Compatibility with PG5 projects version 2.0	4
2.7	Compatibility with the user FBoxes written for PG5 2.0	5
2.8	Compatibility with the user FBoxes written for PG5 1.4	5
2.9	Compatibility restrictions regarding PG5 V1.4	5
2.10	Software License – User registration	6
3	<i>Installing PG5 Suite</i>	7
4	<i>Installing the license key</i>	15
4.1	Introduction	15
4.2	Demonstration version	15
4.3	Installing a license with the 'USER.KEY' file	16
4.4	Installing a license using a password – product key	17
4.5	How to find out the demonstration version's expiry date	18
5	<i>S-Bus USB driver</i>	20
6	<i>Silent installation mode</i>	20

1 DVD for Saia PG5® Suite

Article number: 4717 48820

1.1 Getting Started

Insert DVD into your drive and the DVD Browser shall automatically start installation's navigation page. Choose the Software which must be installed from following options:

Saia PG5® Suite or **Saia PG5® Stand Alone**

1.2 Documentation available with this DVD

Follow the **Manuels** link on Navigation Page to find the documentation directly on the DVD or alternatively you can find the manual on our support home page: <http://www.sbc-support.com>

2 PG5 2.1 installation and compatibility

2.1 Minimum computer requirements

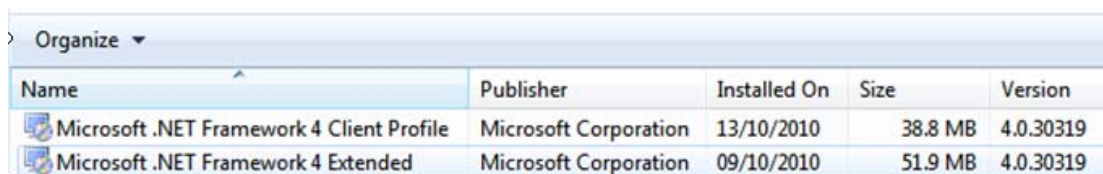
PG5 2.1, including Web Editor 8, works under:

- Windows XP (SP2)
- Windows 7 32 and 64 bit
- Windows 8

For best performance, we recommend installing PG5 2.1 on a PC with a multi-core CPU running at a minimum of 2 GHz with a minimum of 2GB RAM. The installation package requires about 600 MB of free space on your hard disk.

2.2 Prerequisites

'**Microsoft .Net 4.0 Client Profile**' and '**Microsoft .Net 4.0 Extended**' must be installed on the PC. This can be check under the 'Programs and Features' setting inside the 'Control Panel'.



Name	Publisher	Installed On	Size	Version
Microsoft .NET Framework 4 Client Profile	Microsoft Corporation	13/10/2010	38.8 MB	4.0.30319
Microsoft .NET Framework 4 Extended	Microsoft Corporation	09/10/2010	51.9 MB	4.0.30319

The installation package is available with the installation DVD under:

<DVD Drive>:\Windows\dotNetFx40_Full_x86_x64.exe

2.3 Compatibility with old Windows operating systems

PG5 2.1 is not designed to run under the following operating systems:
Windows 95, 98, ME, NT and 2000.

On the other side, it is possible to install PG5 2.1 on Windows Server 2003, Windows Server 2008 and Windows Vista 32/64 bits, but we do not give any guaranty about the functionality because we do not make tests on those versions.

2.4 Setups 32 and 64 bits

According to the target operating system, 32 or 64 bits, the name of the different setups is indexed with 'x32' for 32 bit operating system or 'x64' for 64 bit operating systems.

For example: 'Setup PG5 Suite V2.1.100 x32.exe', 'Setup PG5 Suite V2.1.100 x64.exe'.

The installers without index are supported on all the operating systems, 32 and 64 bit.

For example: 'Setup SD Flash Explorer V2.1.100.exe'.

2.5 Firmware version - COSinus

For a full functionality of this new PG5 version, it is recommended to use the latest COSinus - firmware - versions. The latest COSinus versions 1.22 are available:

- In the following PG5 folder, in using the PG5 Update Manager:
 - o Windows 7 and Windows 8: 'C:\Users\Public\SBC\PG5_21\Firmwares'
 - o Windows XP: C:\Documents and Settings\All Users\SBC\PG5_21\Firmwares'
- On our support site: <http://www.sbc-support.com>
- On the installation DVD: '<DVD drive>:\Firmware Files'.

2.6 Compatibility with PG5 projects version 2.0

Projects done with PG5 V1.4 and V2.0 are upward compatible with PG5 V2.1, but not in the opposite. Once a project has been opened with the new PG5 V2.1, it is no more possible to open it again with a previous version (since files are converted to the new format).

We recommend using different project directories for each PG5 version so that they do not get mixed up. Projects made with the PG5 V1.4, V2.0 must be imported or restored in PG5 V2.1. This makes a new copy of the project and converts the files to new format. The original project stays unchanged.

Saia Burgess Controls has taken all the necessary precautions to guaranty the compatibility between the PG5 projects V1.4, V2.0 and V2.1. But old projects written with PG5 1.3, PG4 or PG3 have not fully tested.

If some projects must be anyway imported from these old software versions, we suggest try to import. If errors happen during the importation or the build after the importation, it is always possible to import the project to the version PG5 1.4 first then to the version V2.1.

2.7 Compatibility with the user FBoxes written for PG5 2.0

The FBox libraries written for PG5 2.0 are fully compatible with PG5 Version 2.1. There is no change concerning the FBox definition files, the source files and the help files.

2.8 Compatibility with the user FBoxes written for PG5 1.4

The FBox libraries from old versions have to be updated. New file formats, new file extensions, new file name conventions to support multi-language libraries and new help format – ‘chm’ - has been introduced from PG5 2.0 regarding older versions.

All the Saia Burgess Controls libraries installed with a more recent version than PG5 V1.4 are already updated to the new format and are compatible with the projects of the previous version. Even the very old libraries like ‘Heavac Dialog’ and ‘Room Controller V10’ are also updated to PG5 2.0!

The libraries written by the users can be updated using one of the methods explained below:

The new Library Manager available in the Saia PG5 Project Manager (Menu: Projects→Library Manager) offers a button ‘Library Converter’ to import and update user FBox libraries from PG5 V1.4 - click the button, define the path of the source library version 1.4, define which libraries have to be converted and enter the path of the new converted library.

The Saia PG5 FBox Builder can import and update the library into a new project and can generate an installation package for more recent PG5 version - open the FBox Builder, command ‘Import, Family ...’, browse to the FBox family and build the installer.

Note: a license is necessary for the FBox Builder.

For the author of the libraries, the FBox Builder projects written under PG5 1.4 are compatible with the new FBox Builder. This new version allows creating libraries installer for PG5 versions V1.4 and V2.1 from the same library project – see under ‘Project Properties’.

2.9 Compatibility restrictions regarding PG5 V1.4

The following features are no more supported, since version PG5 2.0:

- PCD4 and PCD6 devices.
- S-Net for the I/O PCD1
- S-Net Configurator for Profibus FMS.

If some projects with these old products must still be maintained, PG5 version V1.4 and V 2.1 can be installed in parallel on the same computer. Please, continue to use the PG5 V 1.4 for those projects. For all other projects, PG5 V 2.1 can be used without restriction.

There is no functionality restriction regarding the PG5 2.0

2.10 Software License – User registration

PG5 V2.1 needs a new license; it means that a new 'USER.KEY' is required. The key file V 2.0 can not be used with PG5 V 2.1.

The license is registered under your company name.

PG5 2.1 runs for 90 days with a demo key file, installed by default.

In the PG5 version 2.1, a user registration has been implemented. This registration is done when starting PG5 2.1 for the first time. A dialog box is displayed and a link is defined for an online registration. Following your registration, you will receive a 'REGISTRATION.KEY' file per mail. You can then register yourself in selecting the 'REGISTRATION.KEY' file from dialog box, displayed at PG5 start.

If you are not registered, this dialog box will be displayed at each PG5 start. But with a valid license, all functionality of PG5 will be available.

On the opposite, without registration, PG5 will not be able to run with a demonstration version.

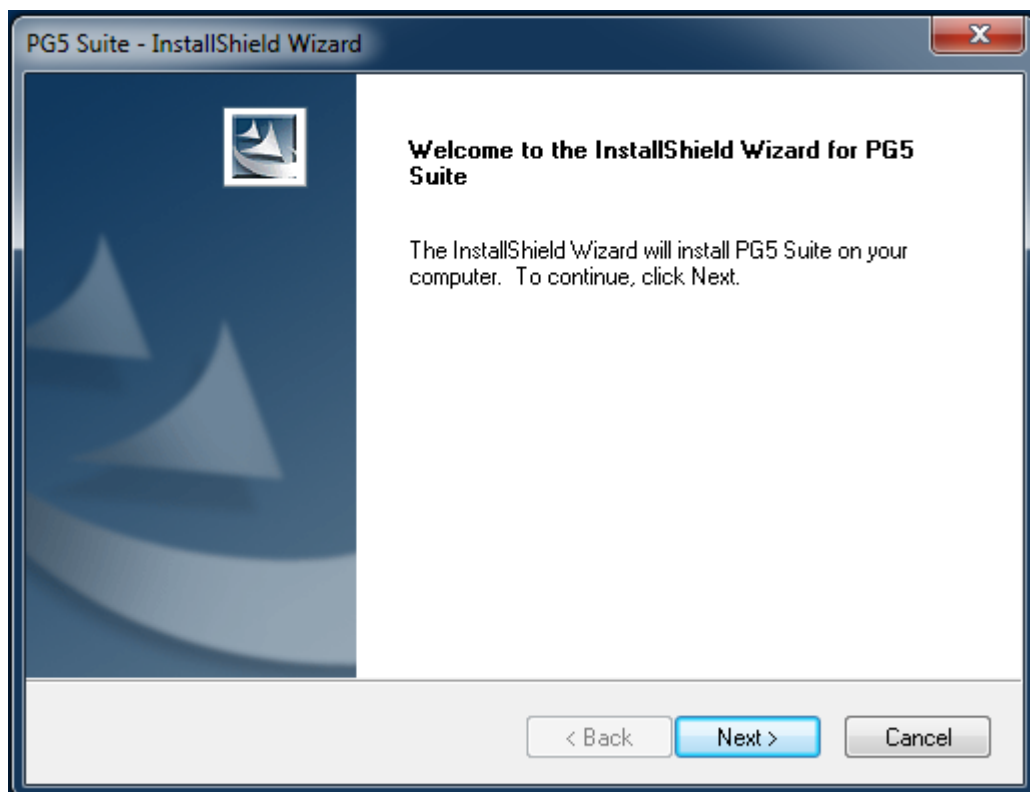
3 Installing PG5 Suite

In order to install the PG5 on your PC, you must have Windows **Administrator** rights.

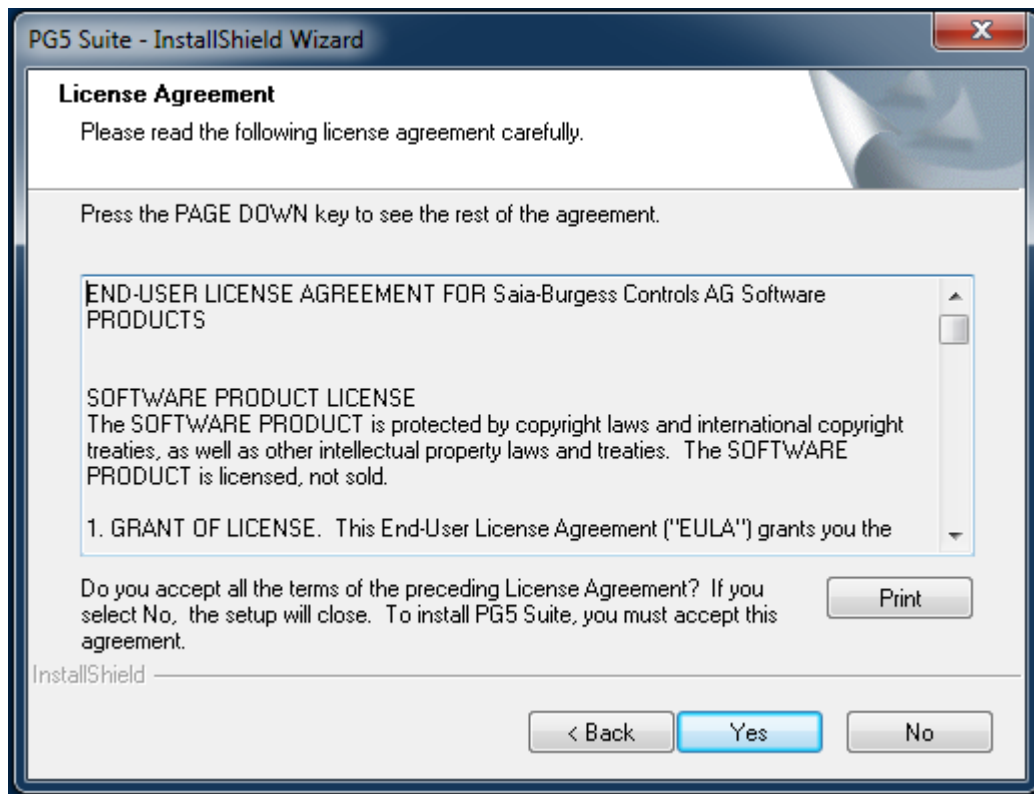
Before starting installation, close all open programs

Start the installation from the start-up screen, or start directly the setup from the DVD:

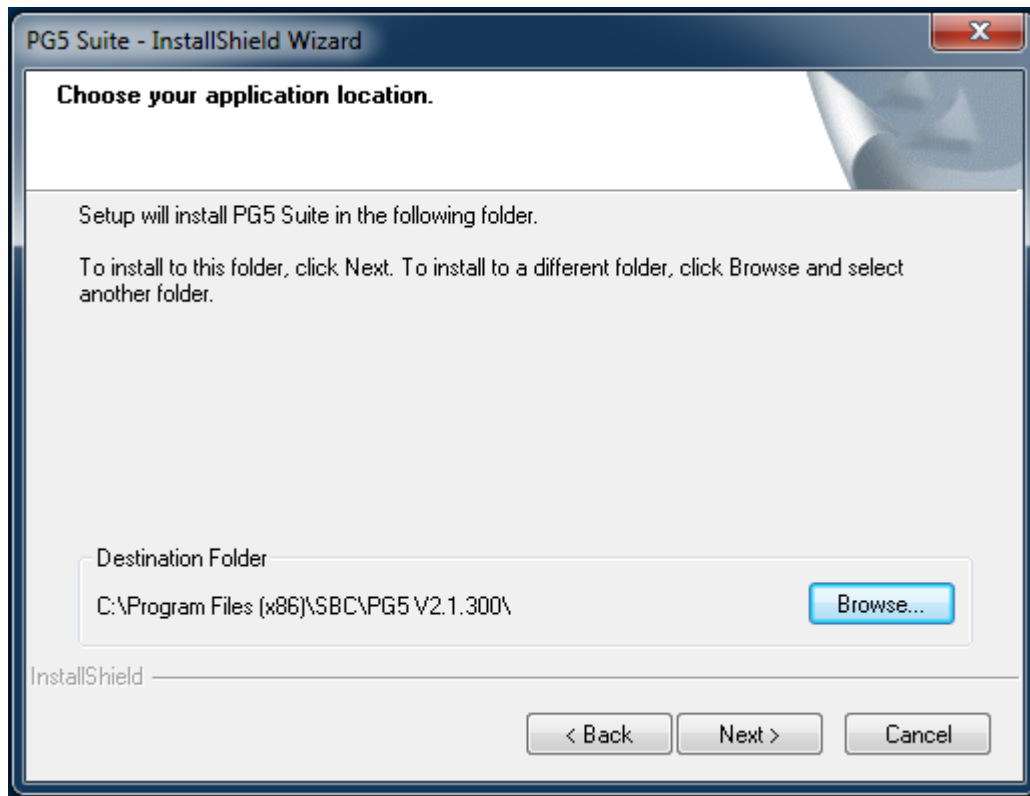
- '**<DVD drive>:\ PG5 Suite\ Setup PG5 Suite V2.1.300 x32.exe'**
for Windows XP or Windows 7 32 bit
- '**<DVD drive>:\ PG5 Suite\ Setup PG5 Suite V2.1.300 x64.exe'**
for Windows 7 64 bit and Windows 8



On the 'Welcome' dialog box, press the 'Next >' button to continue



Read and accept the software license in pressing 'Yes'.



This dialog box allows choosing the installation folder of the PG5. By default, the setup installs the program files under

"C:\Program Files\SBC\PG5 2.1.300"

To modify this directory, select the '*Browse...*' button; choose the desired path and then press the '*Next >*' button to continue.

Note:

PG5 projects, libraries, templates and S-Net files are installed by default in the path:

Windows 7 and 8: 'C:\Users\Public\SBC\PG5_21'

Windows XP: 'C:\Documents and Settings\All Users\SBC\PG5_21'

The configurations for editors are no more saved in Windows registry. Now this kind of data is saved in following directories:

Windows 7 and 8: 'C:\Users\<user name>\AppData\Local\SBC\PG5_21'

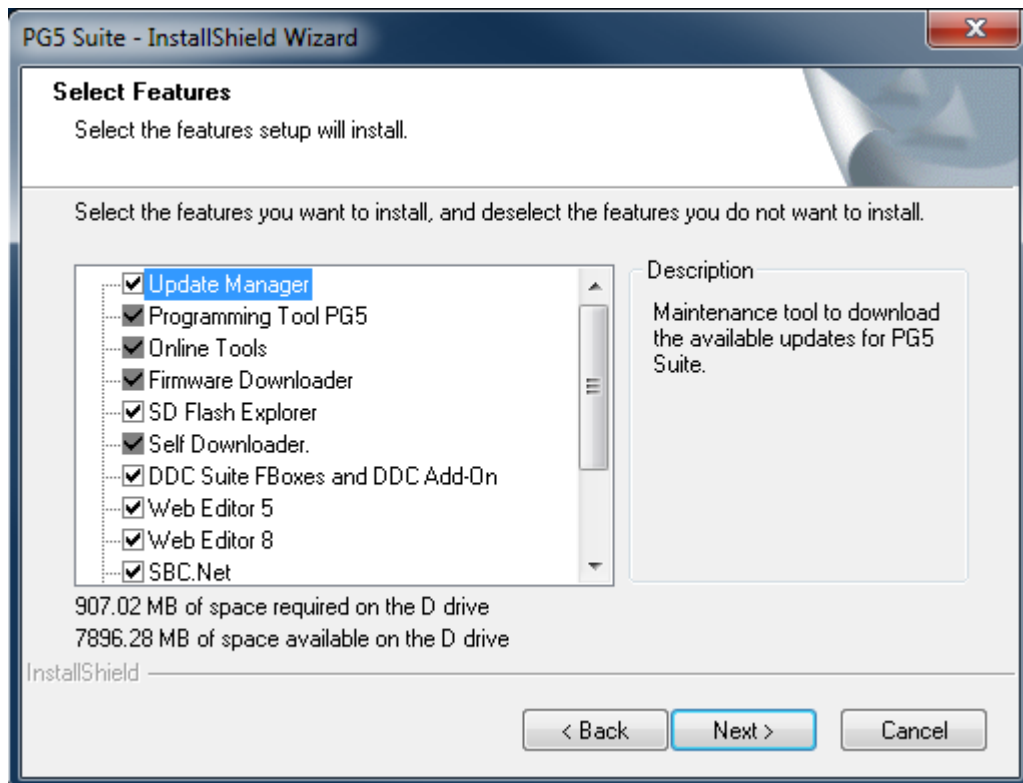
Windows XP: 'C:\Documents and Settings\<user name>\Local Settings\Application Data\SBC\PG5_21'

The license's file (USER.KEY) and the '.5at' files used to register the add-on tools are in the following directory:

Windows 7 and 8: 'C:\Users\Public\SBC\PG5_21\LocalDir'

Windows XP: 'C:\Documents and Settings\All Users\SBC\PG5_21\LocalDir'

Some of those directory paths can be modified in the Tools dialog of the Project Manager, displayed in using the 'Options' command under the 'Tools' menu.



This dialog allows you to select the PG5 features that you want to install:

Update Manager

Tool for checking availability, download and install new PG5 version or patch, new FBox libraries or update of exiting FBox libraries and new firmware version – COSinus.

Programming Tool PG5

Programming tool for the development and maintenance: Project Manager, editors IL, Fupla and Graftec, FBox libraries.

Online Tools

Maintenance tools to upload/download data from/to the PCD Classic without to install the PG5 programming tool: firmware downloader, device configurator, download/upload of programs and media's values (R, F, T, C...).

Firmware Downloader

Maintenance tool for updating the firmware of the PCD and other modules.

SD Flash Explorer

Tool used for reading and writing files on the SD flash memory used in PCD.

Self downloader

Maintenance tool for downloading PCD program using "*.saiasd5" files created by PG5.

DDC Suite FBoxes and DDC Add-On

Set of DDC Suite FBox libraries version 2.0 and 2.5 and add-on tool for an effective programming of HVC installation, including the definition of BACnet configuration, alarming and documentation.

Web Editor 5

Tool used to create, edit and download web pages into the PCD.

Web Editor 8

New tool used to create, edit and download web pages into the PCD. It replaces the Web Editor 5 version.

SBC.Net

Communication driver used to communicate with Saia PCD using HTTP clients like internet explorer. It contains also some other communication tools like the HTTP Reverse, Mail interface Web FTP server and Web FTP.

BACnet Configurator

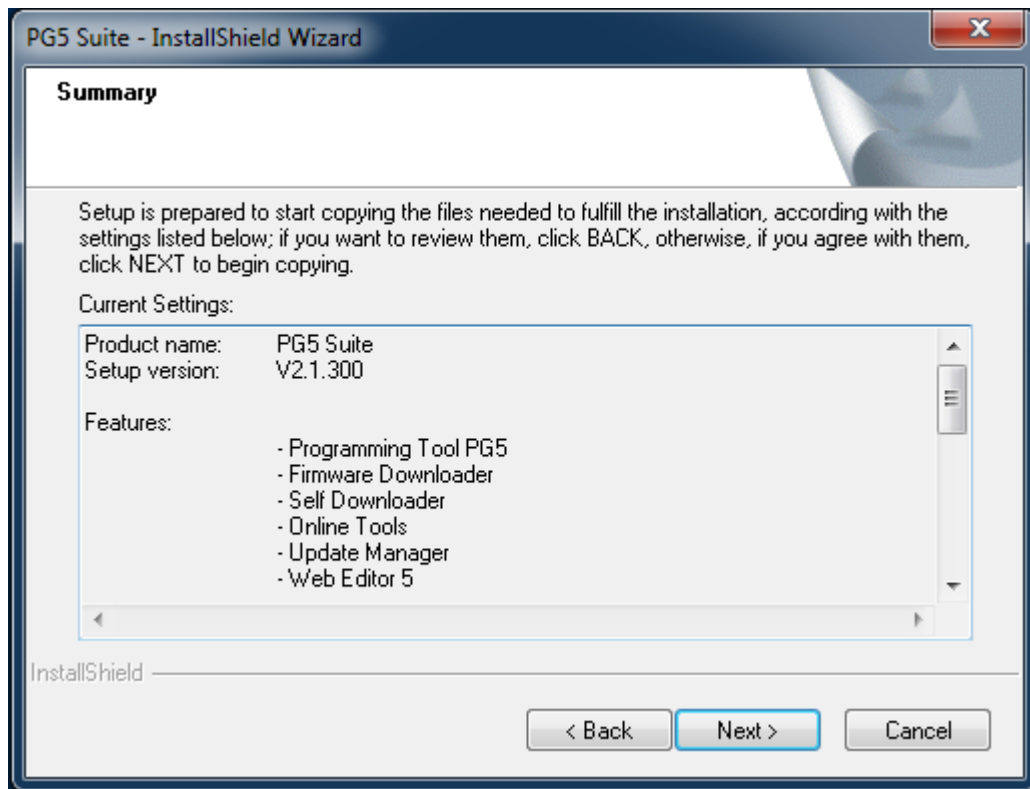
Tool for configuring BACnet objects in PCD.

FBox Builder

Tool for creating FBox libraries.

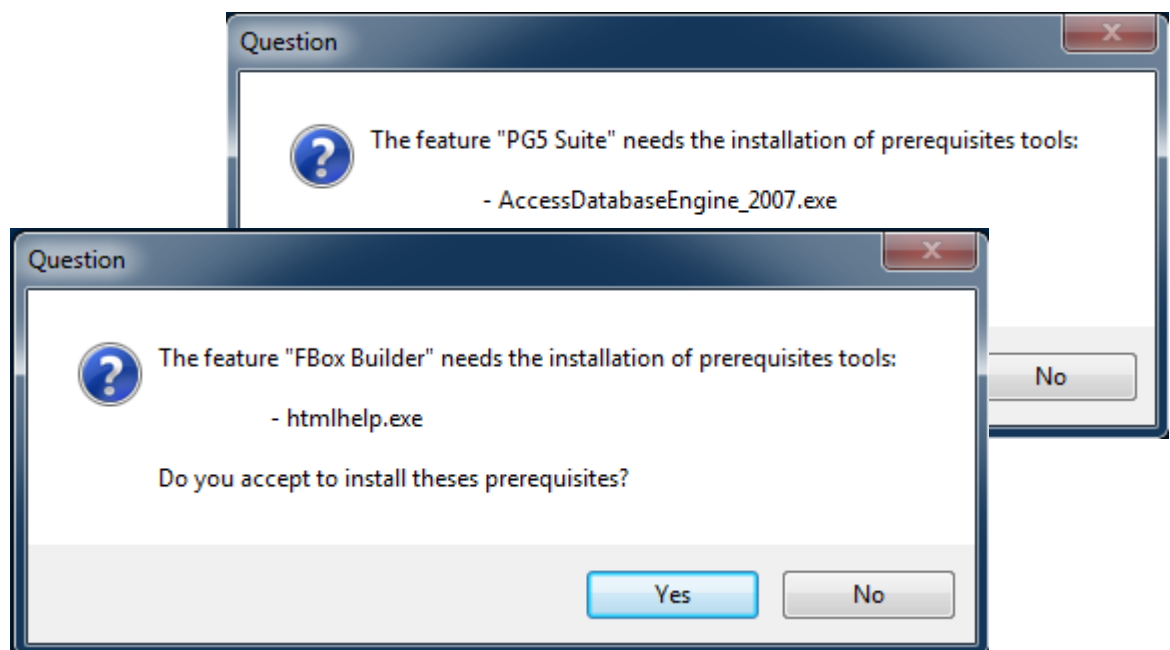
LON IP Configurator

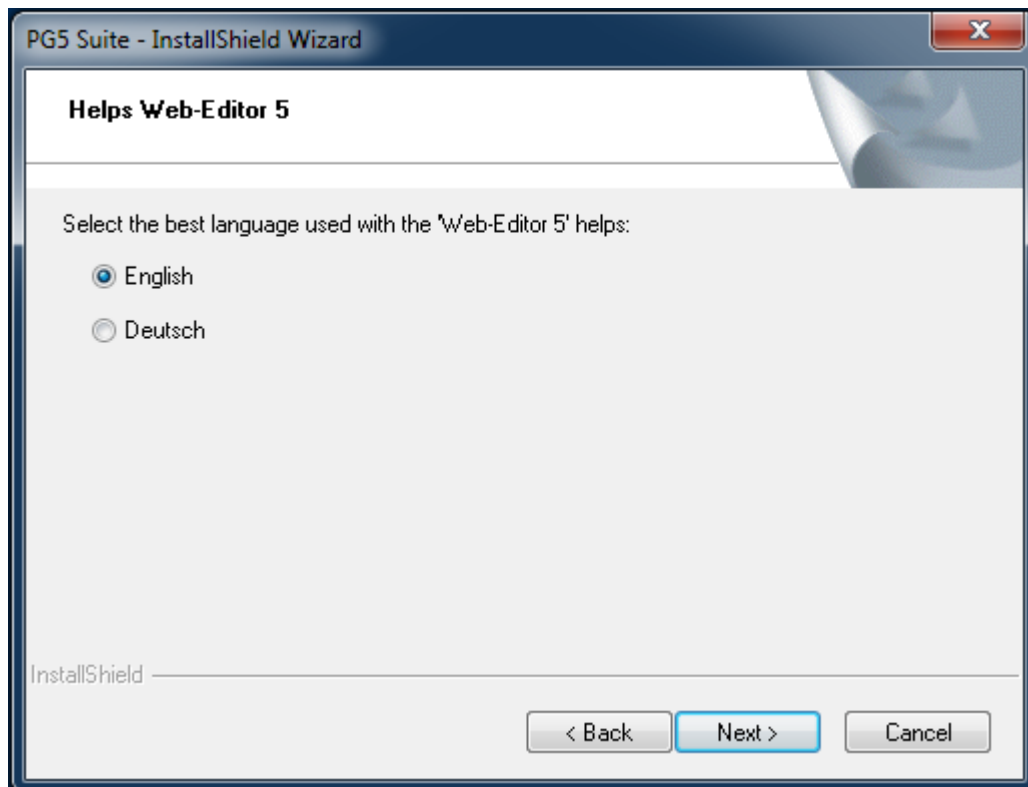
Tool for configuring the LON/IP and TP/FT-10 interfaces.



This dialog box allows you to check the installation parameters. If you would like to modify some previous choices, you can press the '< Back' button. Start the installation by pressing the 'Next >' button.

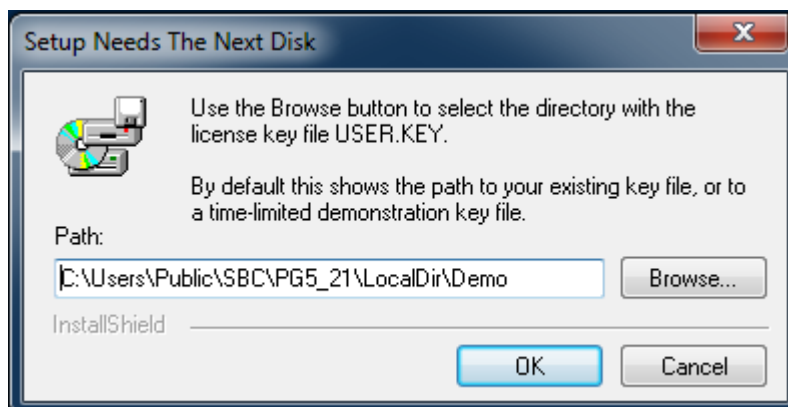
Depending on the components previously installed on your PC and the installation choices defined under "Selected" features, some of the following dialog boxes may be displayed during the installation. This completes the PG5 package with various components required by specific tools, like the LON Configurator or the Project Generator. If those tools are not installed, some applications will not be fully operational. You have to select the button 'Yes' to launch the additional required setups.





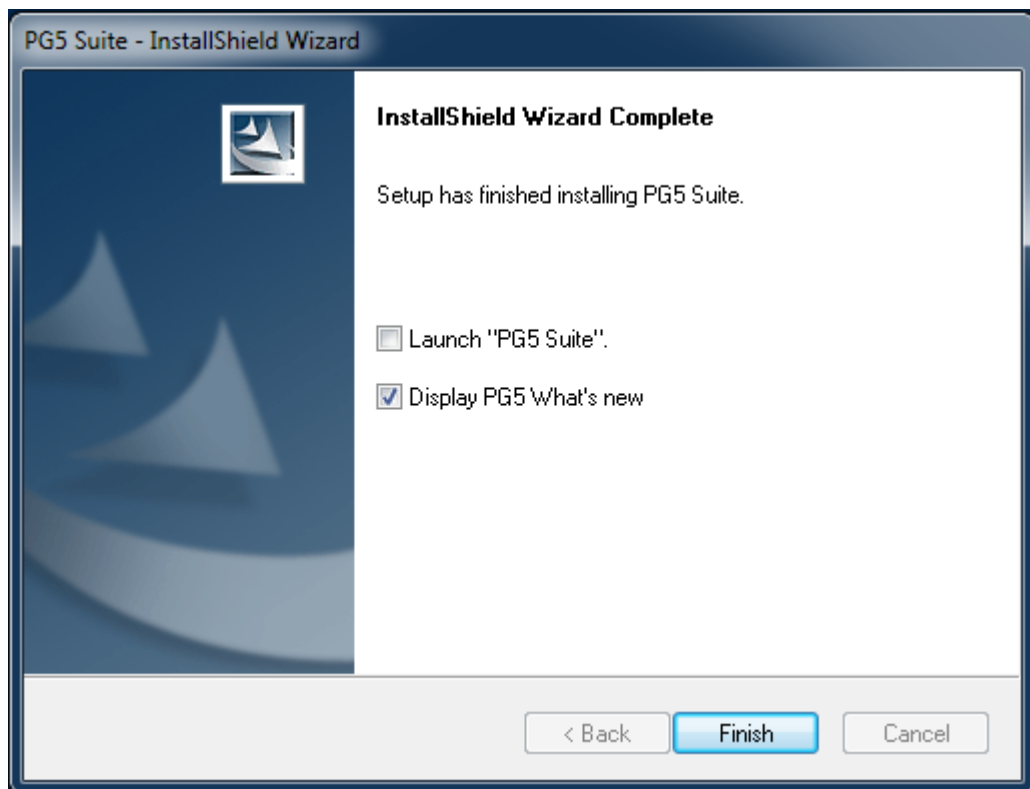
Select the favourite language for the manuals and helps Web Editor 5.

Then press “Next” to continue the Installation.



Use the ‘Browse’ button to select the folder containing your license key file ‘USER.KEY’.

By default this shows the path to your existing key file or to a time-limited demonstration key file from the installation DVD. This demo licence is only valid 90 days.



The installation is now complete. Press the **Finish** button to close the installation.

Note:

The installation folder contains a file with the name of the setup and 'log' as extension. This file contains infos about the installation settings, the installation paths and eventually error or warning messages that appear during the installation.

4 Installing the license key

4.1 Introduction

The license key –‘USER.KEY’ - offers flexibility in the distribution of individual user license configurations, according to your specific requirements and allows an easier installation. All the libraries and editors are installed from the distribution DVD. At run time, the license is checked if a tool or library can be used.

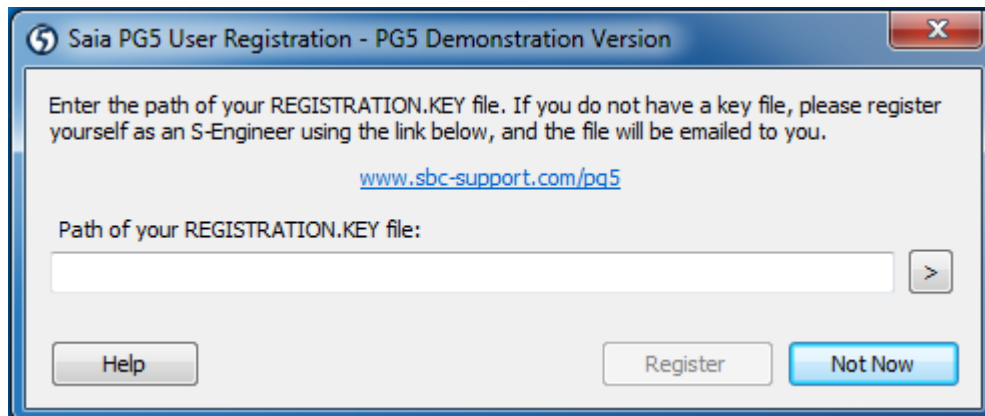
License or license extensions can be quickly sent by e-mailing in order to have access to the functionality you need.

It means that you can at any time update your license in order to access to new functionality, without modifying your software package.

4.2 Demonstration version

The demonstration version of PG5 supports the full usage of all editors and libraries for a limited time period of up to 90 days. After this time period the user will be not be able to use any editor or library, until he order a license - ‘**USER.KEY**’ file – in contacting the SAIA representation.

In order to use PG5 2.1 with the demo license, you must be registered in using the dialog box that is displayed at PG5 2.1 startup. A link to our support website is available to register online.

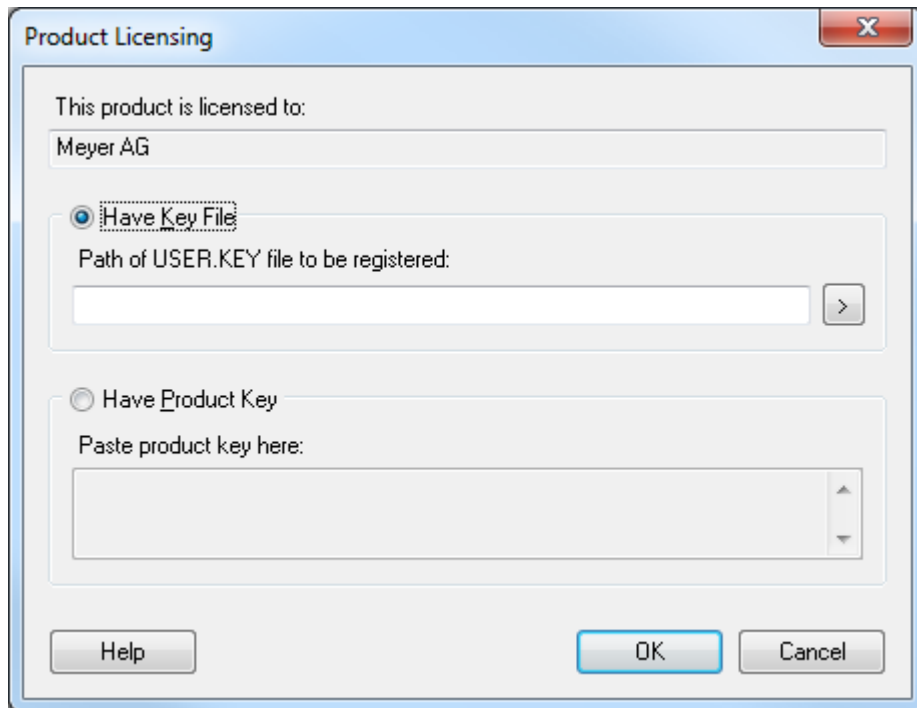


Once registered, you will get a 'REGISTRATION.KEY' file by e-mail. You only need to enter the link to the file in the dialog box. You can then use all features of PG5 without restrictions for a period of 90 days.

With a demo license, PG5 2.1 will not run if you are not registered.

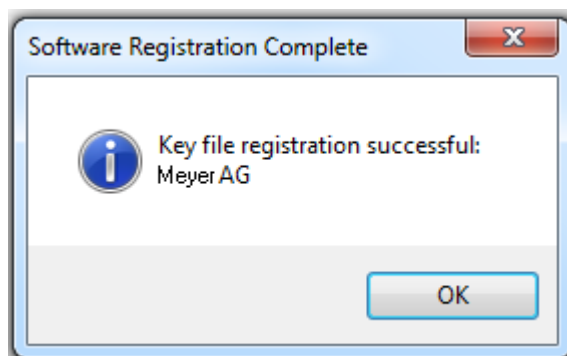
4.3 Installing a license with the 'USER.KEY' file

New licenses or licenses updates are delivered in a file called '**USER.KEY**'.

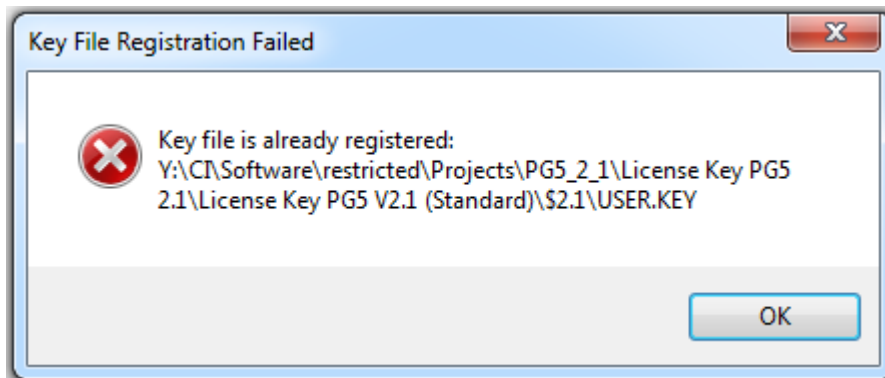


If PG5 is already installed on the computer, please proceed as in the following:

- Open Saia Project Manager using the Windows menu: **Start, All Programs, Saia Burgess Controls, PG5 Suite V2.1.300, Project Manager PG5.**
- From Saia PG5 Project Manager, select the menu **Help, Product Licensing.**
- On the **Product Licensing** dialog box, select the **Have Key File** option and enter the path to the **USER.KEY** file.
- Press **OK**. If all works fine then the following message is displayed:



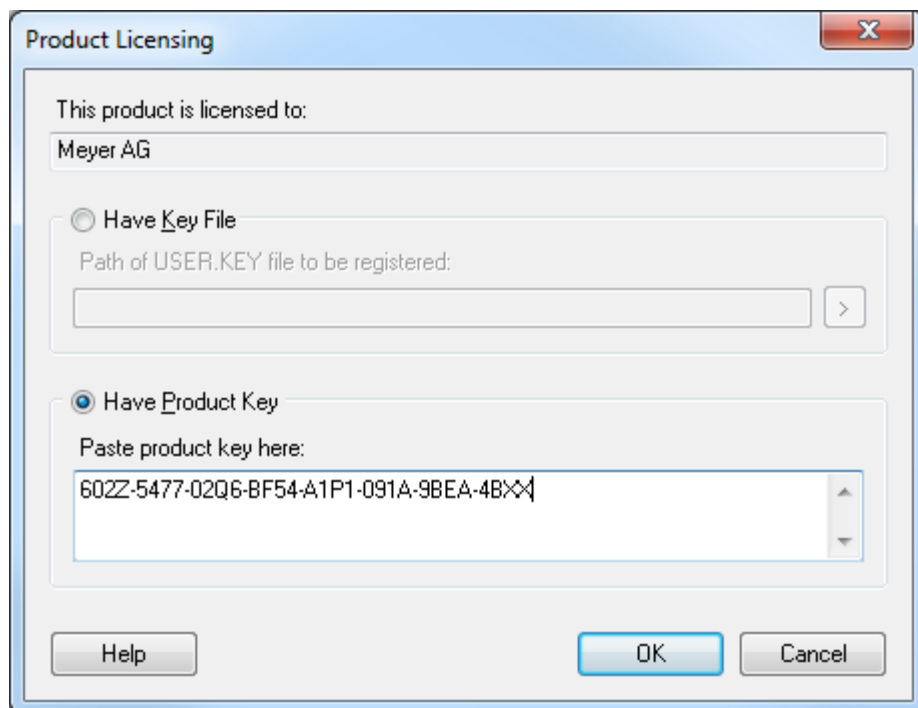
A license key file can only be installed once. If it is installed for a second time on the same computer, the following message is displayed. This has no effect on the software, and will not re-enable expired demonstration periods.



4.4 Installing a license using a password – product key

Small license modifications enabled with a password. To enter password proceed as follows:

- Open **Saia PG5 Project Manager** using Window's Start menu: **Start, All Programs, Saia Burgess Controls, PG5 Suite V2.1.300, Project Manager PG5**.
- From Saia PG5 Project Manager, select the menu **Help, Product Licensing**.
- From the **Product Licensing** dialog box, select the **Have Product Key** option and type the password, or copy/paste it from the email.
- Press **OK**. If the password is valid, the USER.KEY file will be updated with the changes defined by the password. If invalid, re-enter the password correctly.

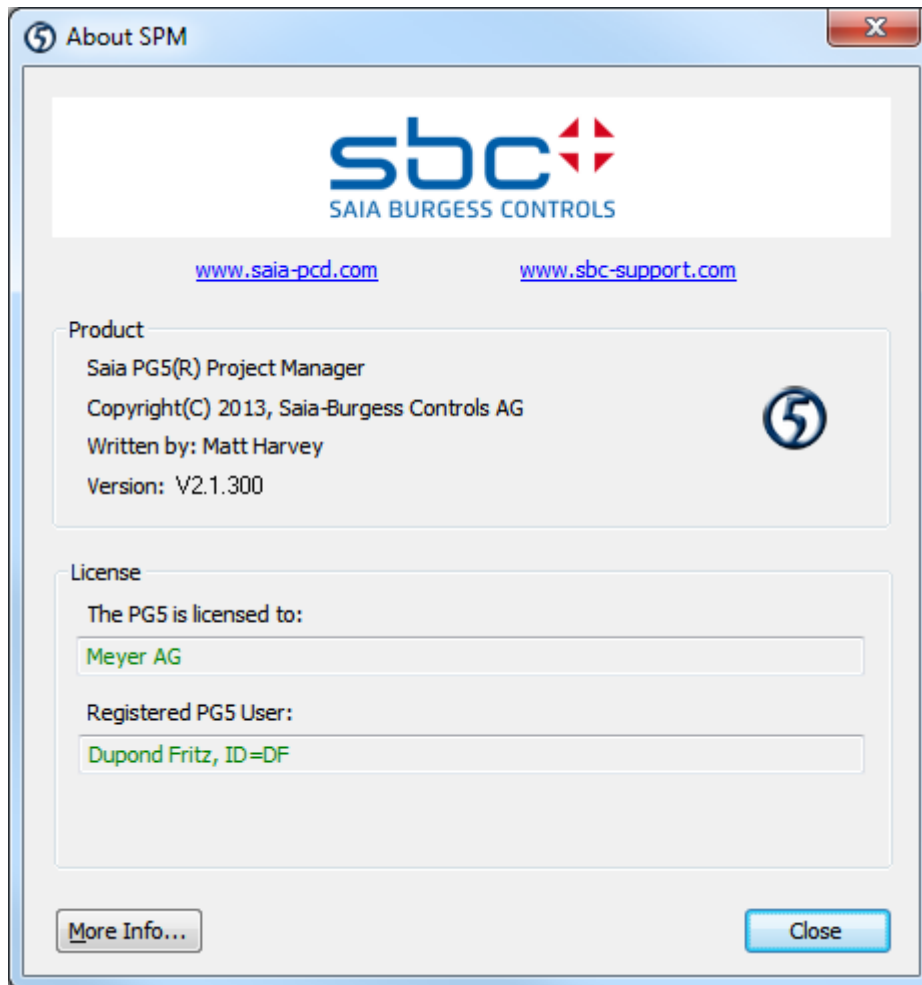


4.5 How to find out the demonstration version's expiry date

Run Saia Project Manager and select the menu command **Help /-About SPM**. The About SPM window displays the information about your license.



The field **'This product is licensed to'**: shows to who is registered the PG5. If **DEMONSTRATION VERSION** is shown then it is not registered. If usage is time-limited, the expiry date is shown with bold letters.



Libraries not supported by the license

When the user installs PG5, all the editors and libraries are installed on the computer, even the libraries not supported by your license.

It is always possible to edit a program using libraries which are not allowed by the license, but when the user wants to build the project (from **Saia PG5 Project Manager** with the menu command: **CPU - Build Changed Files** or **Rebuild All Files**), the PG5 will display a message like this:

Error 2091: Protected library used: Heavac Library [ID=_SAIA_HEAVAC]

This message shows that HVC library is used in the user program but user doesn't have license to support it. It is not possible to make a **Build** until he removes all the unlicensed library elements or gets a license.

5 S-Bus USB driver

From PG5 V 2.0.200, a new USB driver is installed to support the Windows 64 bits. (Sure this driver continue to support the Windows 32 bits)

A restriction is available with this new USB driver: if several PG5 versions are installed on the computer, the new USB driver replaces the old one and no more support the previous PG5 versions. Only PG5 V 1.4 and more recent support the new USB driver, if the next minimums versions are installed:

- PG5 V2.0.200 or more recent.
- PG5 SP 1.4.300 + patch "SCommUpdate_1.4_320.exe"

This patch is available on your DVD PG5:

.\ SComm update for PG5 SP14300 \SCommUpdate_1.4_320.exe

If old PG5 versions are still installed on a computer and Windows is a 32 bits version, this is still possible to force PG5 2.0 to support the old USB driver:

- PG5 1.4 or older are already installed on the computer.
- Install the PG5 V 2.0.200 or more recent
- The USB communication can no more be established with the older PG5.
- Plug the USB cable on the device PCD.
- Select the "Windows Controls Panel", "Device Manager".
- Expand the group "S-Bus" and select "SBus"
- Select the context menu "Uninstall"
- Unplug and plug the USB cable on the device PCD

6 Silent installation mode.

The command line parameters '/s /v /qn' run the PG5 installation in silent mode. The dialogues to select the features, the installation path and the license key are not displayed.

The setup applies a default installation:

- With all the features present in the setup
- Apply the default installation path "C:\Program Files (x86)\SBC\PG5 V2.1.300" *
- Use the valid license already installed else install a demo key

* C: if your window is on that disk

For user which would like define another install path this is possible to complete the command with:

INSTALLDIR="Your_Installation_Path"

Sample:

'C:\Data\Temp\Setup PG5 Suite V2.1.300 x64.exe' /s "/v/qn'

'C:\Data\Temp\Setup PG5 Suite V2.1.300 x64.exe' /s "/v/qn INSTALLDIR="C:\Program Files (x86)\SBC\PG5 V21"'