

## Saia Visi.Plus 1.5.1.47: Good to know – The main differences to the latest official version

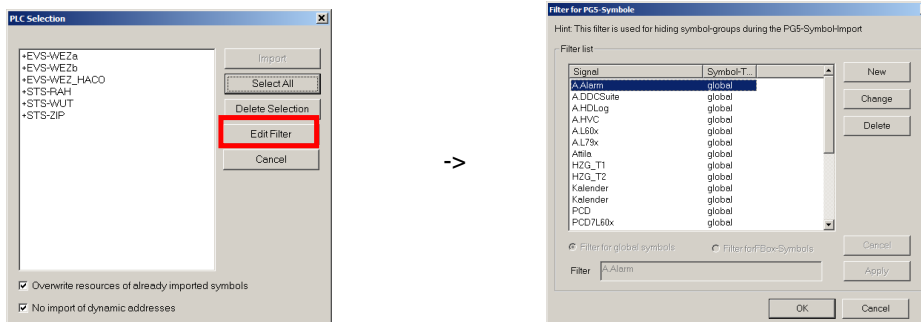
Murten, 18. June 2013

### MAJOR CHANGES in 1.5.1.47 (Official)

- English Help file is updated.
- PET: In PG5 symbol import were symbols imported, although they were inserted in the hide list. OK now.
- There is only one SDriver.pet file list in setup.

### MAJOR CHANGES in 1.5.1.45

- PET:
  - In PG5 symbol import were the analog and digital objects not created when the DP's in the DMS had similar names. OK now.
  - The PLC browser dialog in PG5 symbol import will be now displayed, even if the actual project contains only one PLC.
  - The PLC driver browser was not selected. Now OK.
  - There is an editor available now in PET for the creation of the hide list (filter in PG5 symbol import). In this Window the Import filters for single media (ANA01, DIGI01) and FBox symbol groups can be defined.If the checkbox **Filter for single symbols** is active you can define symbol-group names which will not be imported as ANA01 or/and DIGI01.  
If the checkbox **Filter for FBox-symbols** is active you can define symbol-group names which will not be imported as FBox-Objects.



- PROJECTCFG: Restore/Backup commands are OK now.
- German Help is up to date

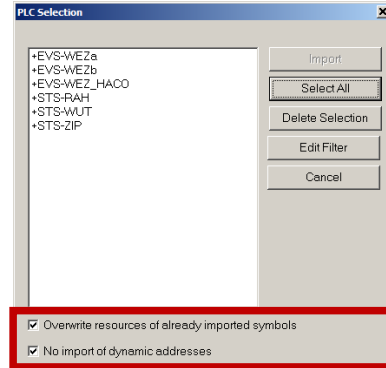
### MAJOR CHANGES in 1.5.1.43

- PET:
  - Ignoring dynamic addresses in PG5 symbol import refers only to ANA01 and DIGI01 objects. If the objects are of the DDC suite and HKL family, then the dynamic addresses will be always imported.
  - if a symbol is found in the Hide list, it is not imported. It does not matter whether the objects are derived from the DDC suite or else a library. In previous versions were only symbols of ANA01 and DIGI01 not imported.
- SDRIVER: - Compatible with PG5 2.1.

#### MAJOR CHANGES in 1.5.1.41

=====

- PET: - Compatible with PG5 2.1.  
- In PG5 symbol import, there you will find two new checkboxes:  
**Overwrites resources of already imported symbols:** If this checkbox is activated all Telegram number, Station number, Channel name and Address will be overwritten.  
**No import of dynamic addresses**  
You can specify whether the dynamic addresses shall to be imported or not



#### MAJOR CHANGES in 1.5.1.39

=====

- For better identification all modules (with a few exceptions) include the setup build number in their version number as the 3rd revision number, e.g.: 1.5.39.9.
- DMS: - No memory leaks anymore under Windows 7 64Bit: these were caused by special sort of hard disks, but only if the DMS menu option in general settings "Disks Monitoring" was activated. By default this option is now deactivated.  
- No longer unlimited grow of dms-backup files (promos.dms files with date/time stamp). Depending on project type and settings, this misbehaviour could fill whole disk in couple of weeks (5-20 GB of backup files...).
- No displaying of warning message boxes anymore, if the user has a valid license and at the same time there is a valid PG5 license on the PC. Normally a Visi.Plus demo-license turns into an engineering license if there is a PG5 license detected, but then always a message box appears periodically "NO END USER LICENSE".

#### MAJOR CHANGES in 1.5.1.38

=====

- For Visi.Plus versions there is a new default installation location: "C:\Visi.Plus"
- SDRIVER: Can be operated in two different modes:
  - 1) 512 channels/4096 DPs - as till now,
  - 2) 256 Channels/16384 DPs.This new setting makes it possible, to write more than 4096 data points to a PLC.