

KKH

Cam programmer

Electromechanical

KKH

Characteristics	<ul style="list-style-type: none">■ open, manual start timer■ manual time setting■ elapsed time indicator
Mounting	<ul style="list-style-type: none">■ flush mounting■ front or side mounting
Dimensions (mm)	55 x 73 x 65
Functions*	no
Time ranges	1, 5, 15, 30 min 1, 2, 3, 12, 24 h
Outputs	2 snap-action as change-over, 250 VAC, 16 A
Supply voltage	230 VAC, 50 Hz



Preferred Range

Ordering Reference	Characteristics
	<ul style="list-style-type: none">■ Without limit stop of 5 mm milled shaft■ Mounted in self tapping screws■ 2 channels■ Supply voltage 220...240 V, 50 Hz
KKH10200B3E1N00	Time range 1 min
KKH10200Q3E1N00	Time range 5 min
KKH10200E4E1N00	Time range 15 min
KKH10200B5E1N00	Time range 1 h
KKH10200R5E1N00	Time range 6 h

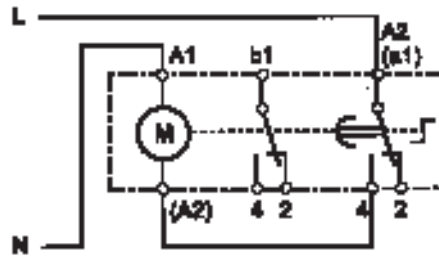
Technical data

Time ranges	1 min	1 h
	5 min	2 h
	15 min	3 h
	30 min	6 h
		12 h
		24 h
Max. setting time	95% of the time range	
Min. setting time	5% of the time range	
Setting accuracy	2% of the time range	
Elapsed time indicator	by the rotating shaft	
Supply voltage	187...264 VAC, 50 Hz	
Power consumption	3.5 VA	
Outputs	snap-action switches with pure silver contacts (change-over)	
Switching capacity	250 VAC, 16 A	
Insulation voltage	2 kV/50 Hz	
Degree of protection	protection class II between plate shaft switch and motor	
Approvals	UL on request	
Ambient temperature	-15°C to +50°C	
Connections	motor: multistrand, 150 mm length, with plug-on connectors 6.3 x 0.8 mm snap-action switches: plug-on connectors 6.3 x 0.8 mm (with hole for soldering)	
Mounting	flush mounting on the front: mounting with 2 self-tapping screws \varnothing 3.5 mm on the side: mounting with 2 screws M3 any mounting position	

Circuit diagrams

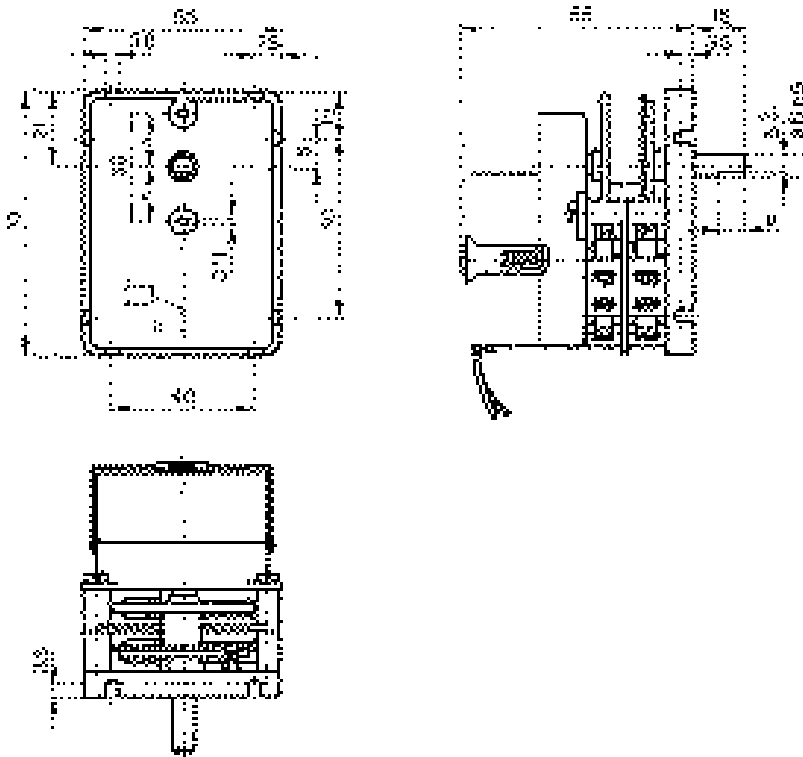


x = period for setting the time
t = set time
z = differential between channel a and b
(1% of the time range final value)



Technical data

Dimensions



Ordering Reference

Type **KKH**

- Shaft 0 Shaft for setting knob with 5 mm flat, and limit stop
 1 Shaft for setting knob with 5 mm flat, without limit stop
 2 Shaft for setting knob without flat, and limit stop
 3 Shaft for setting knob without flat, and without limit stop
 6 Shaft for setting knob with 4.6 mm flat, and limit stop
 7 Shaft for setting knob with 4.6 mm flat, without limit stop

- | | | | | |
|------------------|---|--------------------------------|---|----------------------|
| Type of mounting | 0 | Self tapping screws, Ø 30 mm | 4 | Screws M4, Ø 30 mm |
| | 1 | Self tapping screws, Ø 28.5 mm | 5 | Screws M3, Ø 28.5 mm |
| | 3 | Screws M3, Ø 30 mm | 6 | Screws M4, Ø 28.5 mm |

- Number of channels 1 One channel
 2 Two channels
 3 Three channels

- Program cams 00 Standard milled cam
 01 Adjustable (s) cam
 02 Adjustable (r) cam

- | | | | | | | |
|-------------|----|-----------------------|----|--------|----|------|
| Time ranges | E2 | 15 s | B3 | 1 min | B5 | 1 h |
| | J2 | 30 s | Q3 | 5 min | F5 | 2 h |
| | N2 | 45 s (only for 50 Hz) | B4 | 10 min | J5 | 3 h |
| | | | E4 | 15 min | R5 | 6 h |
| | | | J4 | 30 min | C6 | 12 h |
| | | | | | G6 | 24 h |

- | | | | | |
|----------------|----|------------------|----|------------------|
| Supply voltage | B1 | 12 V, 50 Hz | G1 | 12 V, 60 Hz |
| | B4 | 24 V, 50 Hz | G4 | 24 V, 60 Hz |
| | D1 | 110–120 V, 50 Hz | J1 | 110–120 V, 60 Hz |
| | E1 | 220–240 V, 50 Hz | K1 | 220–240 V, 60 Hz |

N00