

## Firmware Update on PCD2.M487

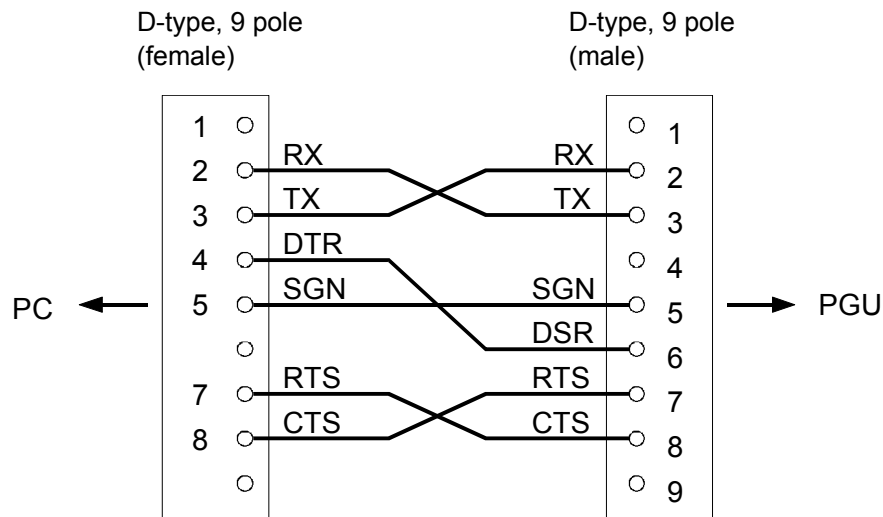
There are 2 possibilities:

- Using the file „FWDnld.exe“ (normal) for the firmware download  
All files are available free of charge on the Saia-Support Page  
„www.sbc-support.ch.“
- Firmware Download with PG5, funktion „Update Download“  
(see manual of PCD2.M480)

### Requirements:



- The download of a firmware on a PCD2.M487 can only be done through the PGU interface. This requires the following connection cable:



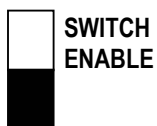
The connection cable can be obtained at Saia-Burgess with the ordering number PCD8.K111.

- In order to download a new firmware the operating system has to be set into the boot state.

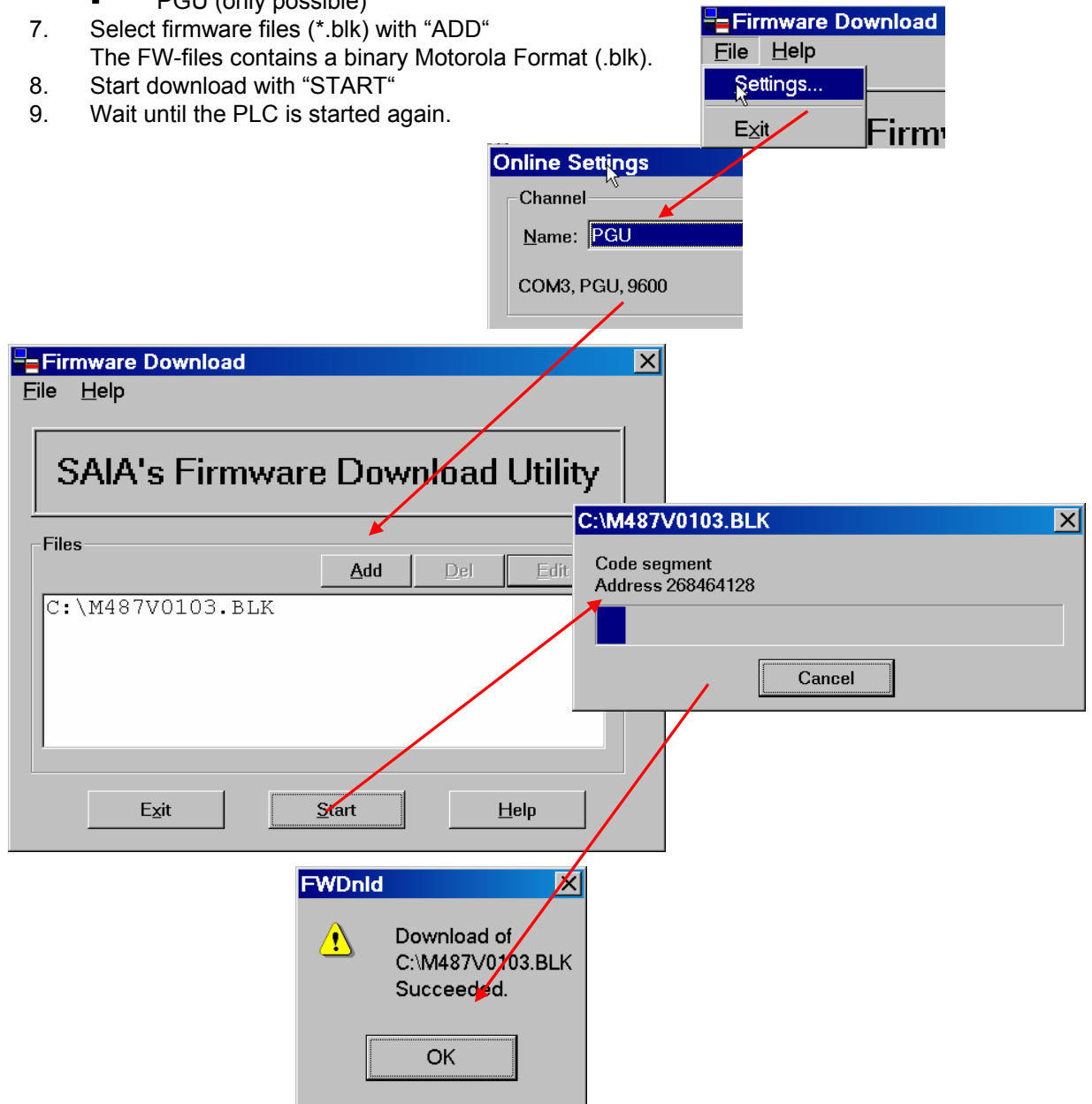


### Firmware Download with file „FWDnld.exe“

1. Switch the power of the PCD on
2. Move **Run/Stop** switch 2 times while the RUN LED indicates (blinks). The indication of the LEDs is the same as if no FW is present. In order to use the **RUN/STOP** switch it has to be activated by jumper J6 (white). (see also chapter „Jumper J6, switch „Run – Stop“ and „ Processor module operating states“).



3. Start the FW-Download Tool (Double click on "FWDnld.exe")
4. Select the communication mode of the serial connection with "Settings"
  - PGU (only possible)
7. Select firmware files (\*.blk) with "ADD"  
The FW-files contains a binary Motorola Format (.blk).
8. Start download with "START"
9. Wait until the PLC is started again.



When this message is displayed, the new firmware has been stored in the controller's RAM. The firmware will subsequently be programmed into flash memory (see LED states). Depending on the new firmware, the "CPLD" may also then be programmed (all LEDs off). The PCD should not under any circumstances be switched off during this time (about 10 to 30 seconds).

## LED states during FW update

|   |       |   |  |
|---|-------|---|--|
| <b>FW<br/>download<br/>running</b>          | RUN   | ▼ | FW is being loaded. While the new<br>FW is being loaded, the controller<br>must not be switched off.<br>LEDs flash from top to bottom.                                 |
|   | HALT  | ▼ |  |
|   | ERROR | ▼ |  |
| <b>FW FLASH<br/>programming<br/>running</b> | RUN   | ▼ | FW is being program to the flash.<br>While the new FW is being program,<br>the controller must not be switched off.<br>LEDs flash from top to bottom.                  |
|   | HALT  | ▼ |  |
|   | ERROR | ▼ |  |
| <b>No FW</b>                                | RUN   | ▲ | No runnable firmware is available on<br>the system. New FW must be loaded<br>with the additional PG5 program<br>"FW Update".<br><br>LEDs flash in sequence up and down |
|   | HALT  | ▲ |  |
|   | ERROR | ▲ |  |

### Please note:

The user program in PCD RAM will be lost when the new firmware is loaded. It can be loaded again from the flash card (if present) next time the PCD restarts.

