

Easy Templating Simple Object Creator and Using simple object – Quick Guide

Version	Date	Description
1 based on 4.7.110.32_1.4.3018.0	17.09.2019	Initial version

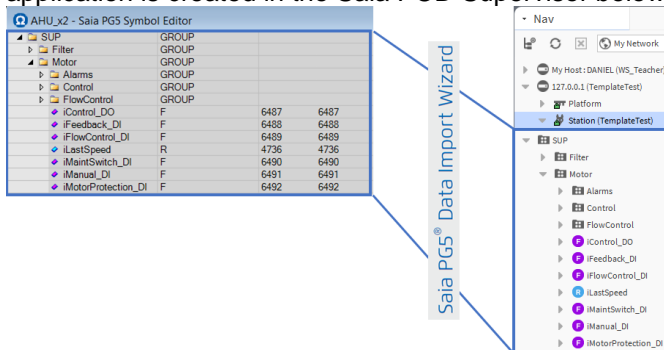
Date: 20.09.2019

The document describes the creation and usage of templates for the Saia PCD Supervisor. On the second section the creation of the templates is described and on the third section the usage of the created templates is described. The easy template creator is available since the version 4.7.110.32_1.4.3018.0 of the Saia PCD Supervisor.

Easy Templating Simple Object Creator and Using simple object – Quick Guide

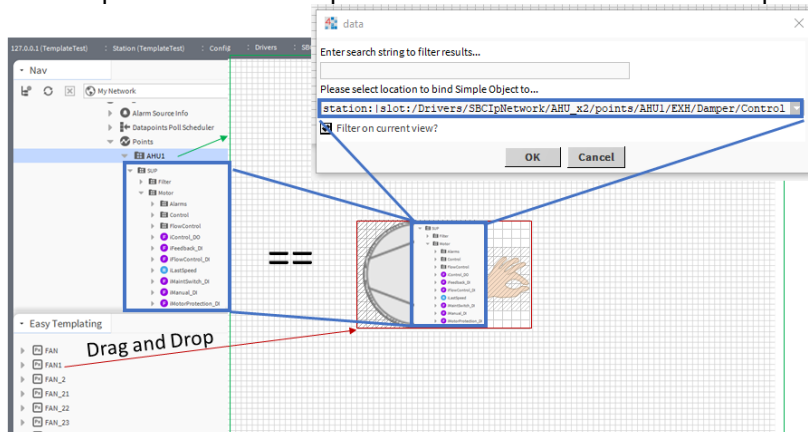
**1. Introduction:
 Templating Process**

The templating process is based on the data point structure in the Nav-Tree of the Saia PCD Supervisor. The data point structure for S-Bus devices is created by the used FBoxes in PG5 Fupla. During the data point import using the “Saia PCD PG5 Import Wizard”, the data point structure from the symbol editor of the PG5 application is created in the Saia PCD Supervisor below the NAV Tree - S-Bus device location.



The Easy Template Object includes the data point structures needed. The “Easy Templating Binding” in the properties of the template component will scan the resources “ORDs” from the template and try to match the structure with the content available in the NAV-Tree. In case there is a match between the template and the data structure, the templating tool will present a list of locations where the template can be bound to. Select the locations in the list where you like to bind the template dropped on the px file.

All data points from the template will then be linked to the corresponding components from the NAV tree.



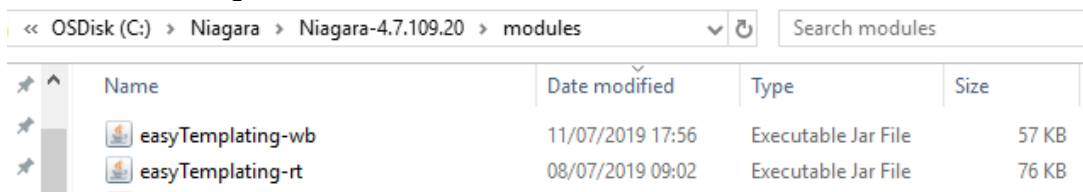
Remark:

Actually, the easy templating is based on the name and structure of the components.

2. Creation of templates:

Step 1

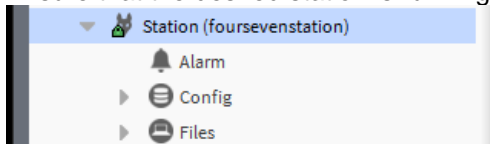
Ensure that the easyTemplating module (both -rt and -wb parts) is installed in the Niagara Workbench 'modules' folder, e.g.:



Name	Date modified	Type	Size
easyTemplating-wb	11/07/2019 17:56	Executable Jar File	57 KB
easyTemplating-rt	08/07/2019 09:02	Executable Jar File	76 KB

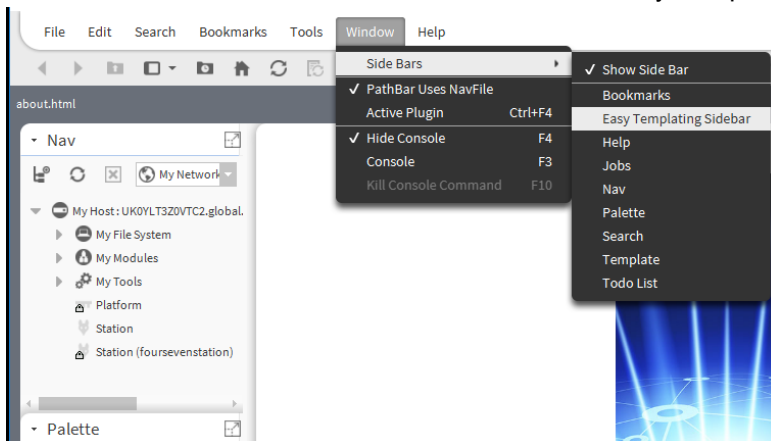
Step 2

Ensure that the desired station is running and logged in, for example:



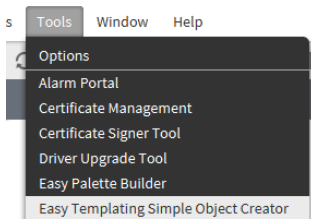
Step 3

If the 'Easy Templating Sidebar' is not already visible on the left-hand side of the Niagara Workbench, go to the 'Window' menu, select 'Side Bars', then select 'Easy Templating Sidebar', as follows:

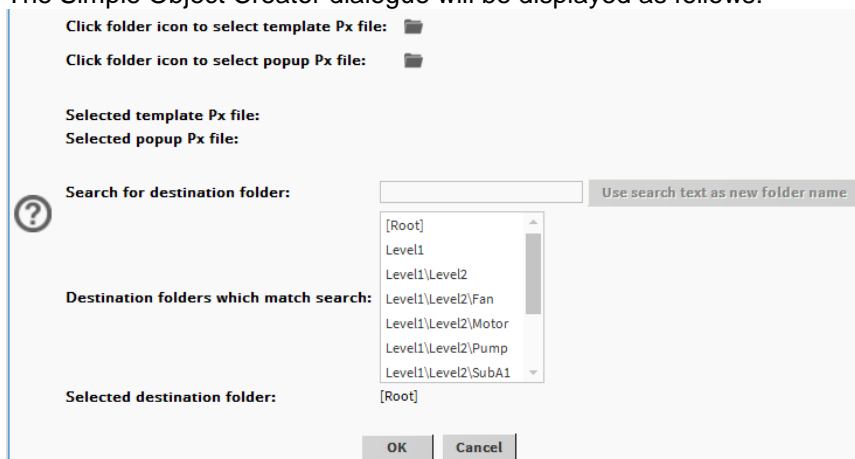


Step 4

From the 'Tools' menu, run the 'EasyTemplating Simple Object Creator' as follows:

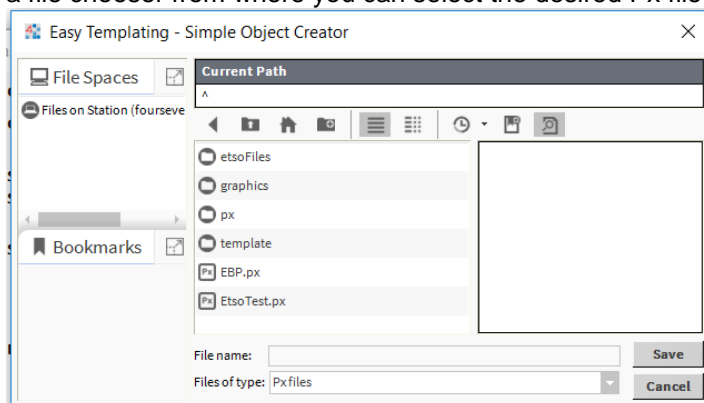


The Simple Object Creator dialogue will be displayed as follows:



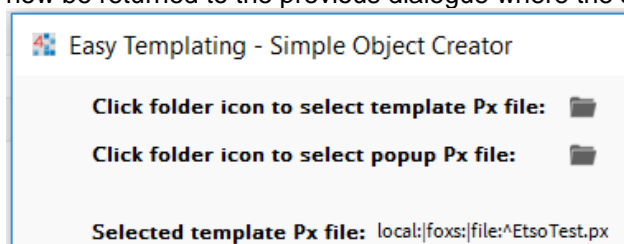
Step 5

Click the first folder icon to select a Px file that will act as a template (this step is mandatory). This will open up a file chooser from where you can select the desired Px file in the station, e.g.:



Step 6

Navigate around the file chooser, select the desired file (note: must be of type 'Px'), and click 'Save'. You will now be returned to the previous dialogue where the selected Px file will now be displayed, e.g.:

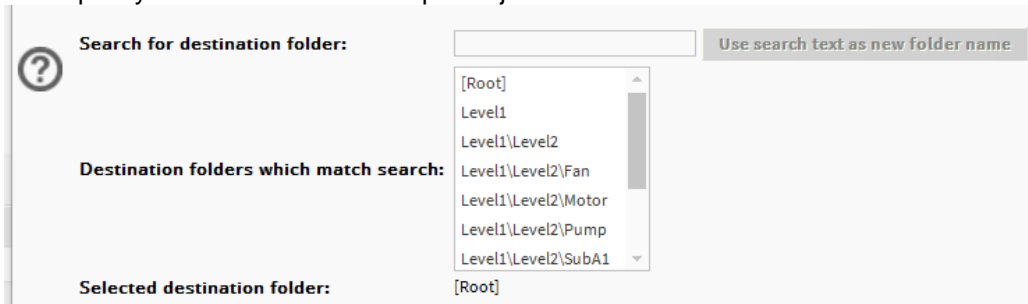


Step 7

Optionally, click the second folder icon to select a Px file that will act as an associated popup; if chosen, this Px file will also be displayed, similar to step 6.

Step 8

Now specify a folder where the Simple Object will be created:



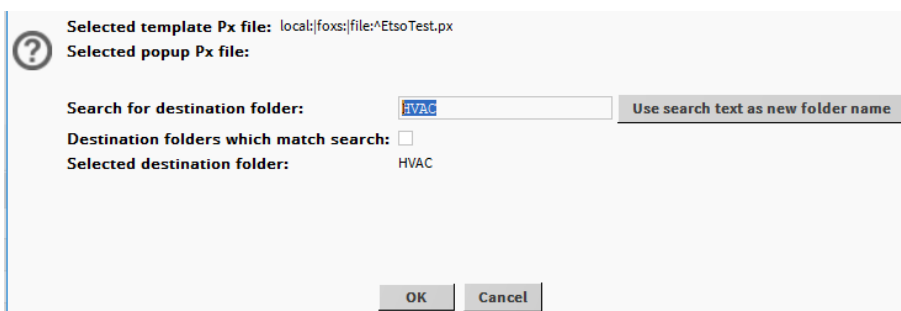
You can do this either by entering text in the 'Search for destination folder' field, and/or by clicking an item from the list of matching destination folders. As you edit the text field, the list will adjust to display only those folder paths which match the text in the field. At any time, if the search field doesn't match anything in the list, the 'Use search text as new folder name' button will be enabled; clicking the button will allow you to create a new folder where you can store your Simple Object. The '[Root]' folder indicates the top-most folder where Simple Objects can be stored; all other folders listed are subfolders underneath [Root].

There are certain rules which must be followed when naming a new folder, and thus only certain characters will be accepted by the search field, namely alphabetic, numeric, underscore, forward slash and back slash (these latter two will be merged into the one type of file separator recognised by the host operating system). Other characters will be ignored. The following multiple character sequences are not permitted:

- Double slash of any combination
- A fragment of a folder name which starts with a numeric
- A fragment of a folder name which starts or ends with an underscore

Step 9

Once a folder name has been selected from the search field or the list, it will be displayed in the 'Selected destination folder' label. At this point, if all selected data is correct, click 'OK'. If the Simple Object file and all of its dependencies are successfully created, this will be confirmed, otherwise an error will be displayed to indicate what is likely to have gone wrong:



3. Using simple object – Quick Guide

Step 1

At this stage, there should be some ETSO's visible in the 'Easy Templating Sidebar' as in Figure 1.

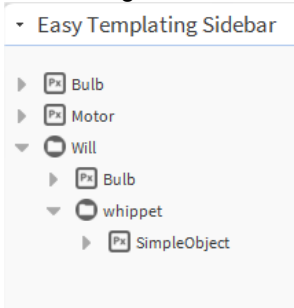


Figure 1

Open a new or existing Px Page, and simply drag and drop one of the items from the 'Easy Templating Sidebar' onto the page as in Figure 2.

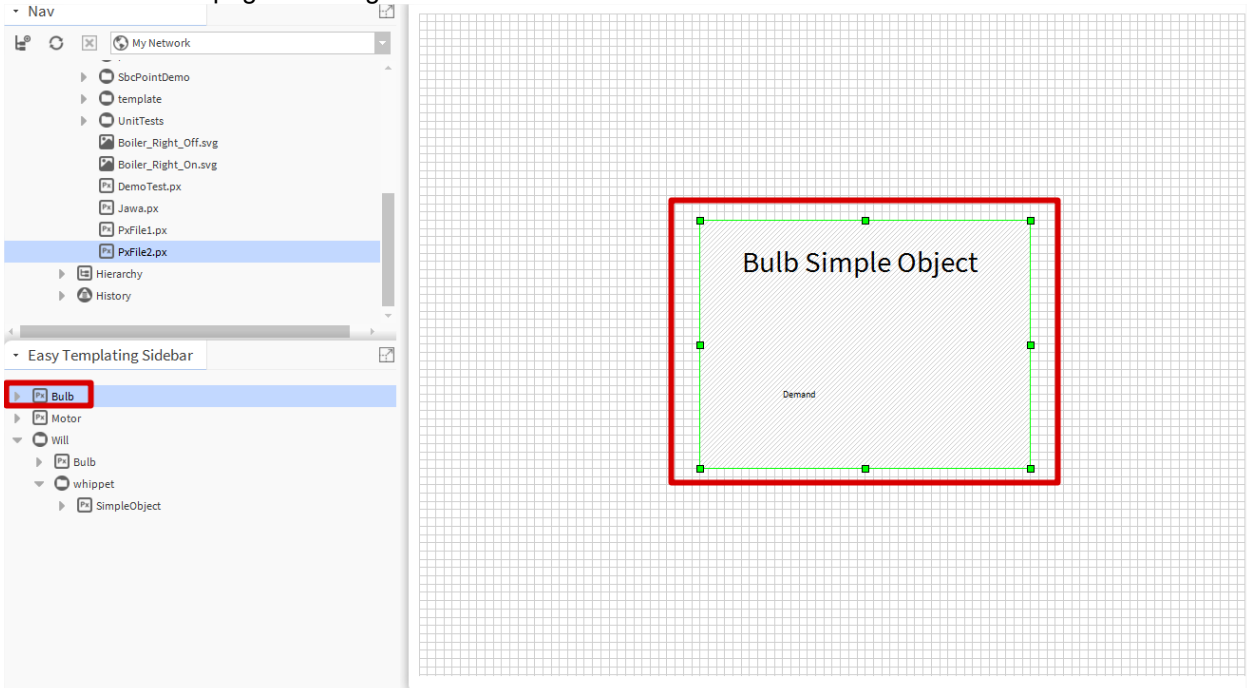


Figure 2

Step 2

Once the ETSO object has been dragged onto the PxPage, using the properties page, open the binding dialog by double clicking on 'CLICK_HERE_TO_CHOOSE_BINDING' (Figure 3)

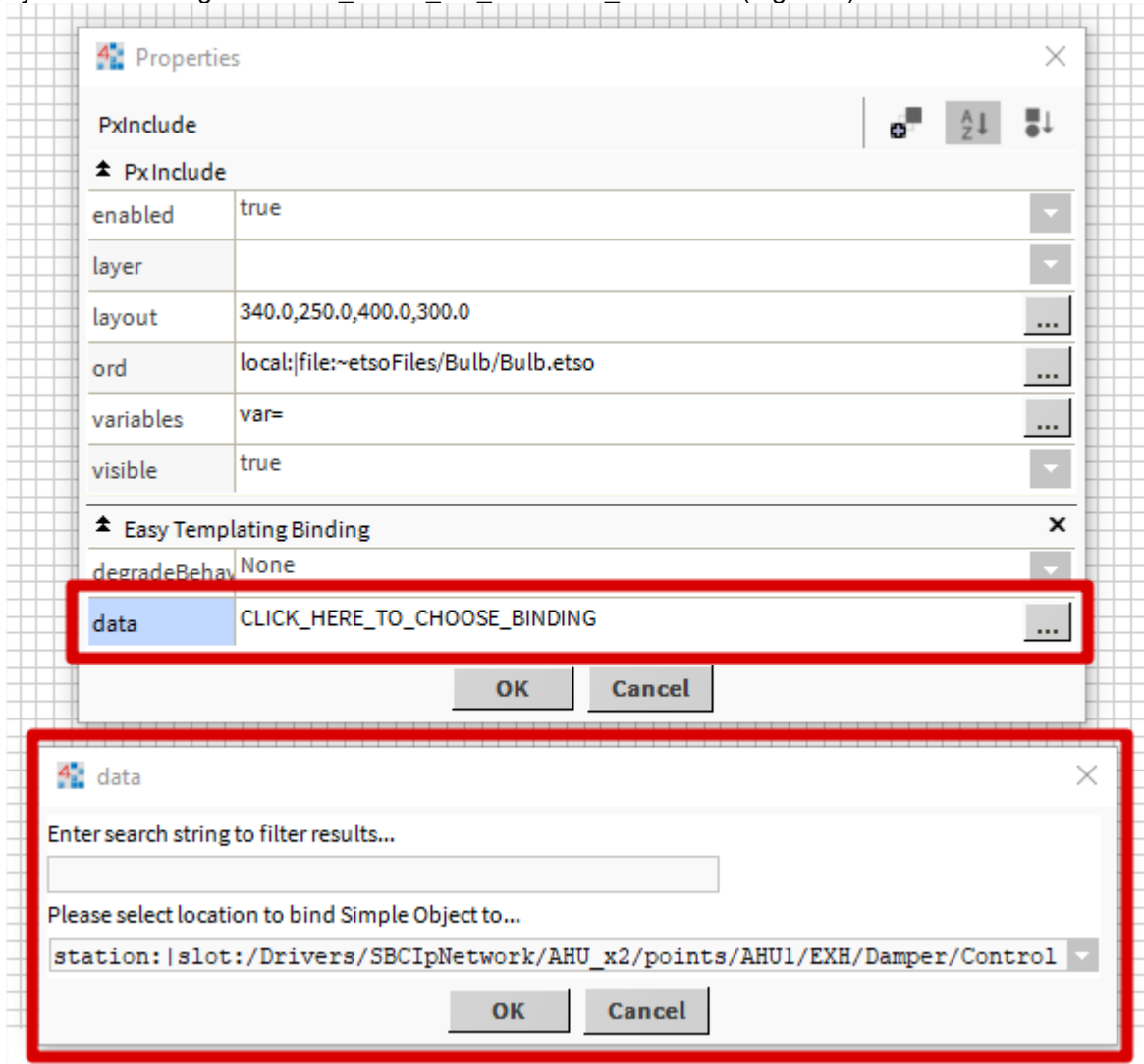


Figure 3

Note: If instead of opening a Px Page directly from the file folder, you have opened a View on a component in your station – you will see a slightly different Binding Dialog (Figure 4).

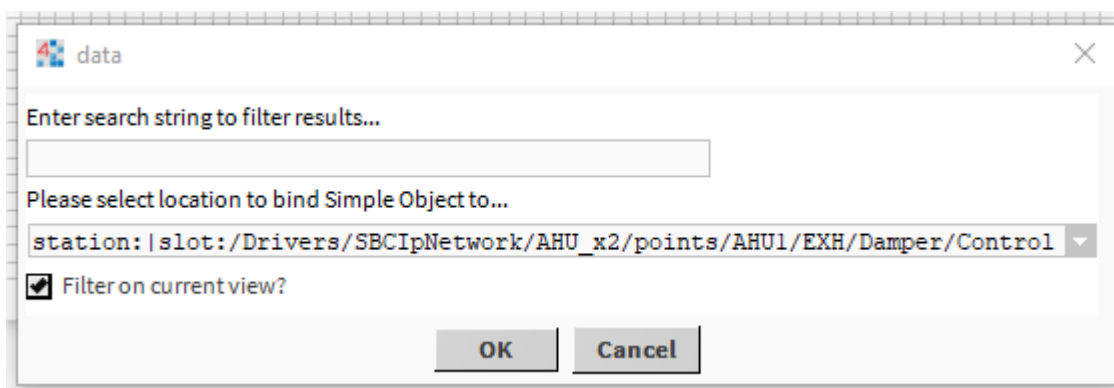


Figure 4

You will notice the addition of the 'Filter on current view?' checkbox. This will filter the binding location to be below the current view only. Unchecking this will return results from the entire station.

Step 3

You can use the search box to enter a string which the results will filter on. The string can match any part of the ord to be a successful result. (Figure 5).

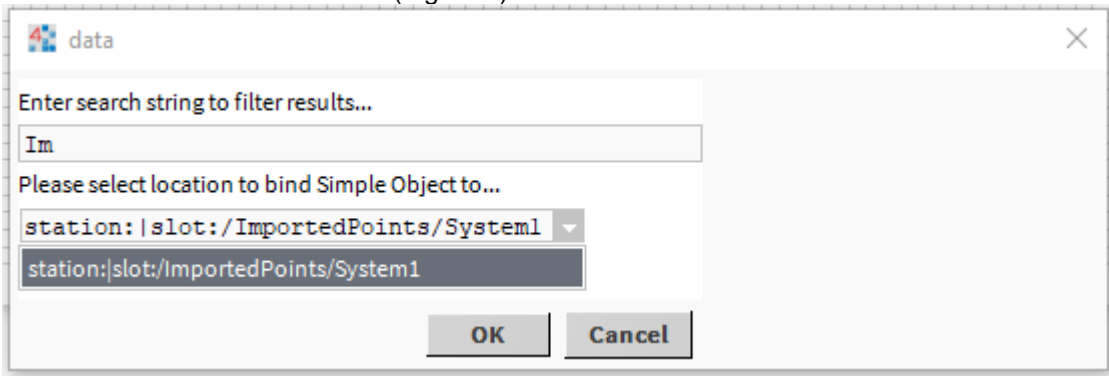


Figure 5

Step 4

Select the desired location to bind to and select 'Ok'. Upon closing the properties page, the Px Variable will be set, and any point values / animations used on the ETSO will be populated. Any files will be copied into the station files under the 'etsoFiles' folder so the station has all the dependencies it requires.