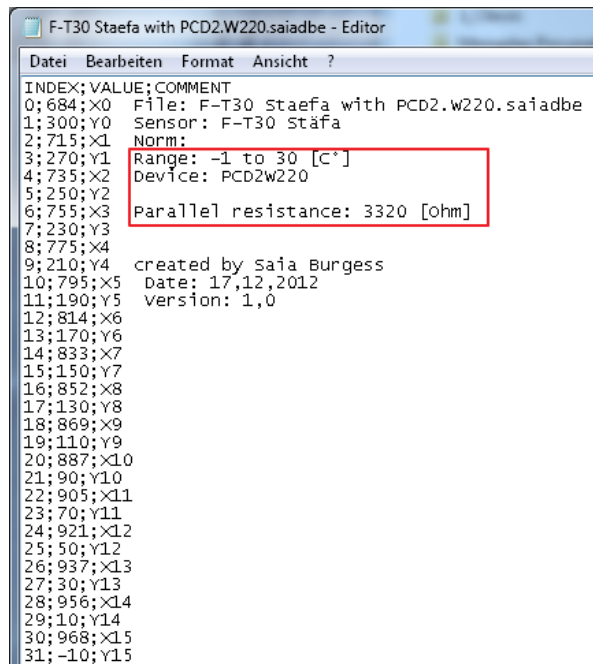


## Instruction how to use the .saiaadb Files

You have to check if the DB does correspond to your needs.

In order to do it so, open the corresponding DB File with the file extension \*.saiaadb with a text editor. When you open the File it looks like the following picture. Check if the temperature range and the device concur. Check also what for a resistance has to be set, in serial or parallel, with the temperature sensor (Check red rectangle marked).

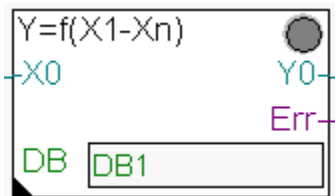


```
F-T30 Staefa with PCD2.W220.saiadb - Editor
Datei Bearbeiten Format Ansicht ?
INDEX;VALUE;COMMENT
0;684;X0 File: F-T30 Staefa with PCD2.W220.saiadb
1;300;Y0 Sensor: F-T30 Stäfa
2;715;X1 Norm:
3;270;Y1 Range: -1 to 30 [C°]
4;735;X2 Device: PCD2W220
5;250;Y2
6;755;X3 Parallel resistance: 3320 [ohm]
7;230;Y3
8;775;X4
9;210;Y4 created by Saia Burgess
10;795;X5 Date: 17,12,2012
11;190;Y5 Version: 1,0
12;814;X6
13;170;Y6
14;833;X7
15;150;Y7
16;852;X8
17;130;Y8
18;869;X9
19;110;Y9
20;887;X10
21;90;Y10
22;905;X11
23;70;Y11
24;921;X12
25;50;Y12
26;937;X13
27;30;Y13
28;956;X14
29;10;Y14
30;968;X15
31;-10;Y15
```

If no existing DB does concur, contact the Saia Support with the following e-mail [support@saia-pcd.com](mailto:support@saia-pcd.com). The Support needs a specification of the temperature sensor (for example a table which temperature amount to which resistance), which analog card you use and in which temperature range you need to measure.

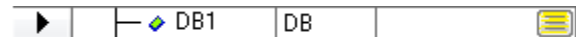
## Method 2 from PG5 2.1:

In PG5 2.1 there is a new function implemented to fill up DB's with DB import files. For that, there is a new conversion 20 Fbox developed which is referring to a DB. This combination allows referring more than one sensor on one Fbox. In addition to that several conversion 20 Fboxes can refer on an DB.

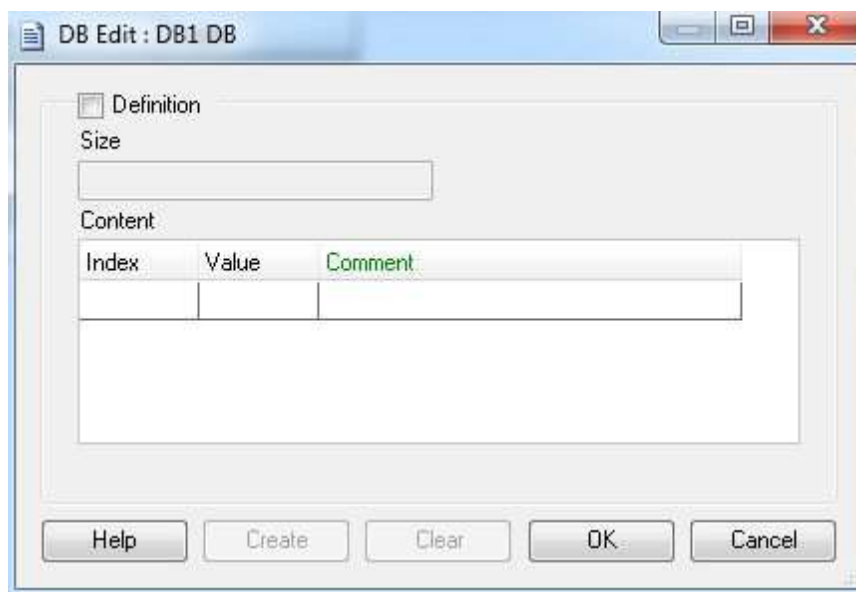


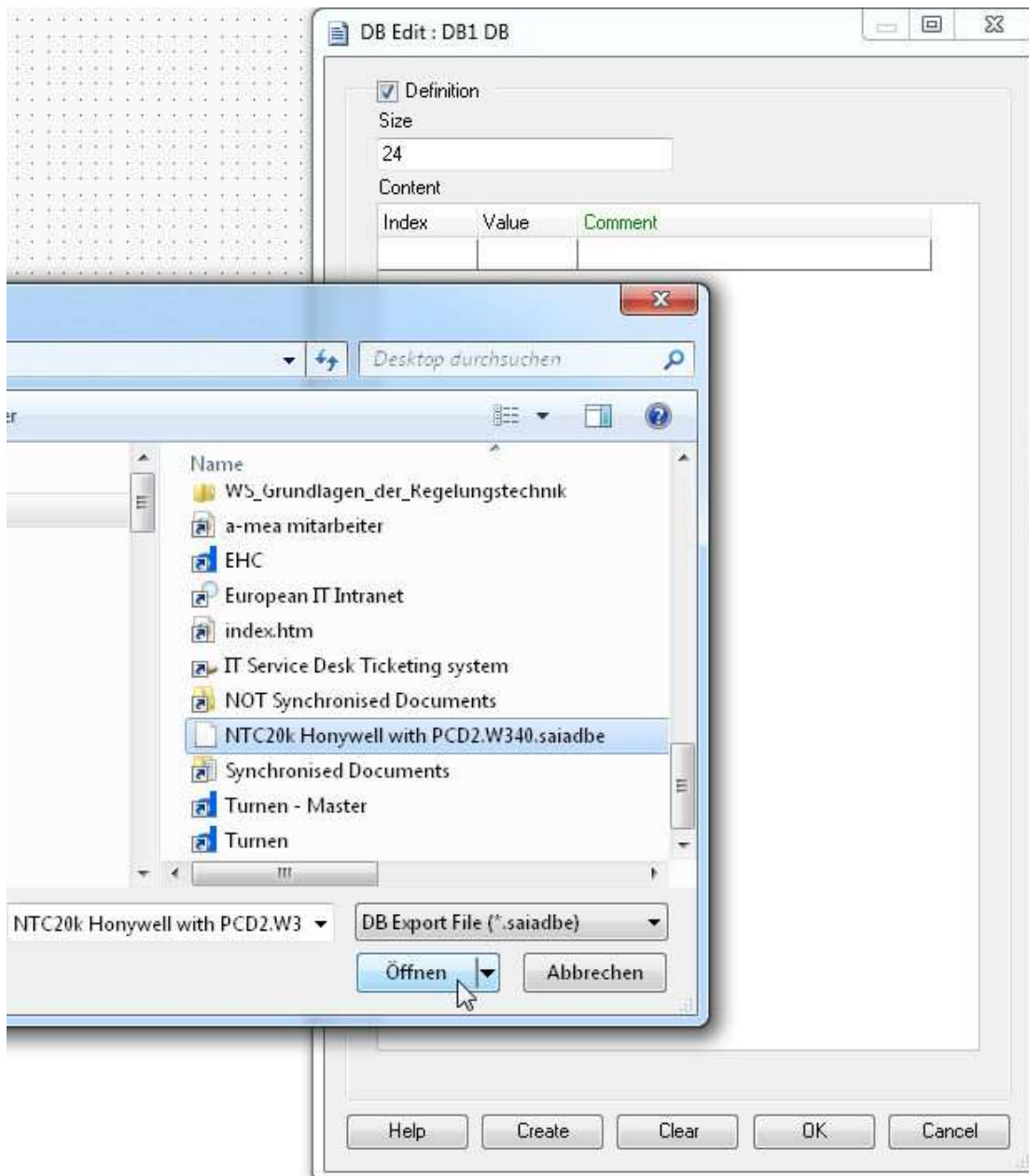
This Fbox "conversion DB n points" you can also find in heavac general. In the DB field you have to adapt the name of the DB, on which this Fbox should refer. After that, the DB must be loaded with the correct curve with the saidadbe file.

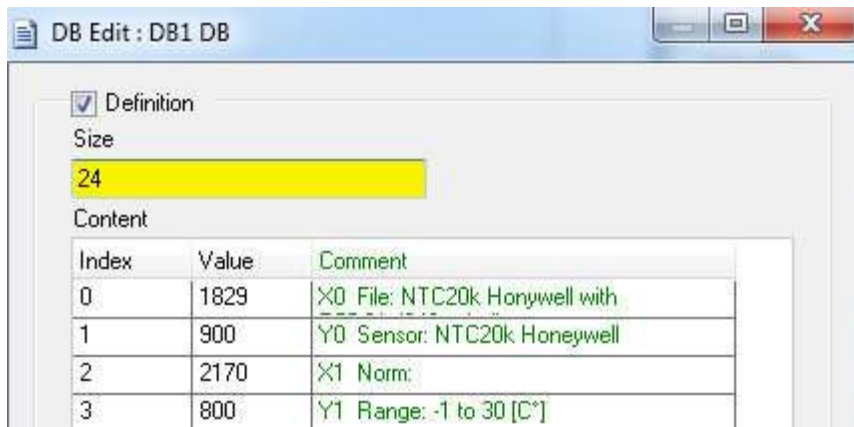
In the symbol editor on the line of the DB, you have to press the button in the row Address/Value.



With a right mouse click in the window and the choice "Import" in the menu, you can now upload the correct saidadbe file and fill up the DB with the correct points like that. The saidadbe file you can get from the support.







After the import, the values in the DB's are shown in a table. You have to type in the correct amount of table lines in the box "size".

Also the "size", but you have to write the amount of points in the DB, so the half of size of the conversion fbox.

