

Technical data

Power supply	10...30 VDC with integrated reverse voltage protection
Current consumption	Max. 50 mA
Display	6-digit red, 7-segment LED display, 8 mm high
Data protection	EEPROM
Counting display	See overview (display range)
Reset	Manual, electrical or lockable
Standards	IEC 61000-6-4/IEC 55011 class B IEC 61000-6-2
EMC	CE-compliant with EU Directive 89/36/EC
Housing	Dark grey RAL 7021
Ambient temperature	10–26 VDC: -20 °C...+65 °C, no condensation >26–30 VDC: -20 °C...+55 °C, no condensation
Storage temperature	-25 °C to +70 °C
Protection type	IP 65 front
Dimensions	Front dimensions and switchboard section see dimension diagram

Counting inputs

Inputs

Polarity of inputs	NPN or PNP programmable for all inputs
Counting frequency	Max. 60 kHz, can be reduced to 30 Hz (position display max. 25 kHz)
Input resistance	Approx. 5 k Ω
Switching level	Low: 0...0.2 \times U _B (VDC), High: 0.6 \times U _B ...30 VDC
Reset input	Min. 5 ms

Outputs

Optocoupler	Max. 30 VDC, 10 mA
-------------	--------------------

Pulse counter (CXG201)

Display range	0...999 999, decimal space 0.0...0.000
---------------	--

Pulse counter and position display (CXG211 U, CXG212)

Display range	-199 999...999 999, decimal space 0.0...0.000
Display scaling	Divisor: 0 - 99.9999, multiplier: 0 - 99.9999

Frequency display (CXG221)

Display range	0...999 999, decimal space 0.0...0.000
Display scaling	Divisor: 0 - 99.9999, multiplier: 0 - 99.9999
Display unit	1/min, 1/sec, period duration principle > 38 Hz, gate time measurement principle < 38 Hz

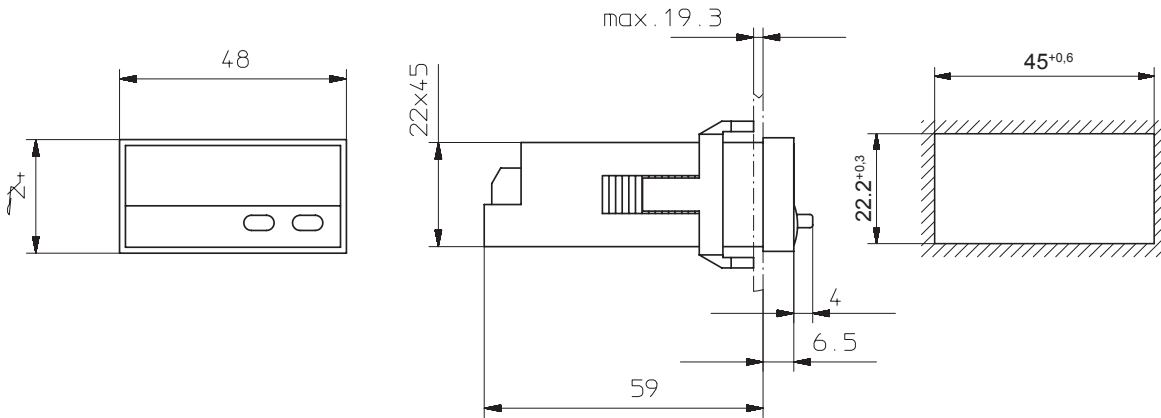
Hour meter (CXG213)

Display range	0...999 999, decimal space 0.0...0.000 (determines the resolution of the time range)
Time range	Hrs, mins or sec and hh.mm.ss
Resolution	1 ms

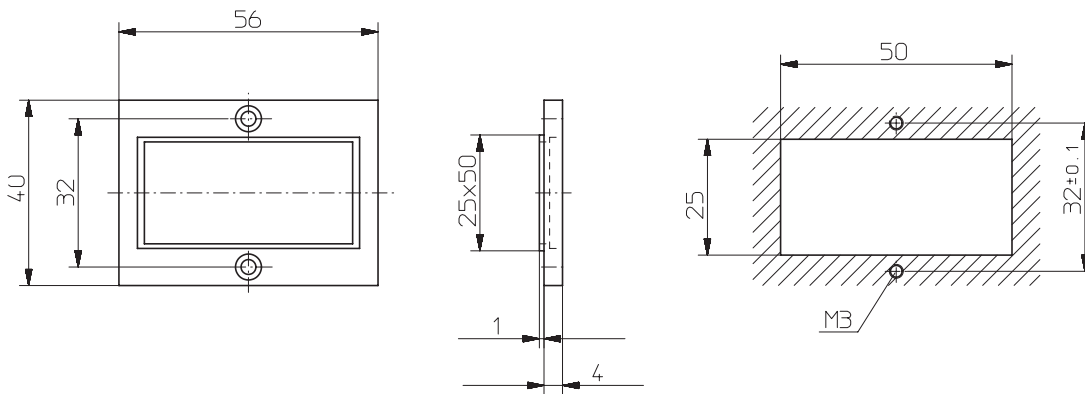
Various measurement types of timing (pulse widths and period duration)

Dimension diagrams

CXG201, 211, 212, 221, 231



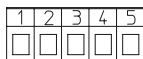
Dimensions for mounting frames (included in scope of delivery)



Pin assignment

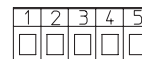
CXG201

1 10 ... 30 V DC
2 0 V GND
3 INP
4 -
5 Reset



CXG211,212,221,231

1 10 ... 30 V DC
2 0 V GND
3 INP A
4 INP B
5 Reset



Scope of delivery

- Digital display
- Clamping springs
- Front frames for screw mounting (56 × 40 mm) or panel cut-out (50 × 25 mm)
- Sealing
- Instruction manual