

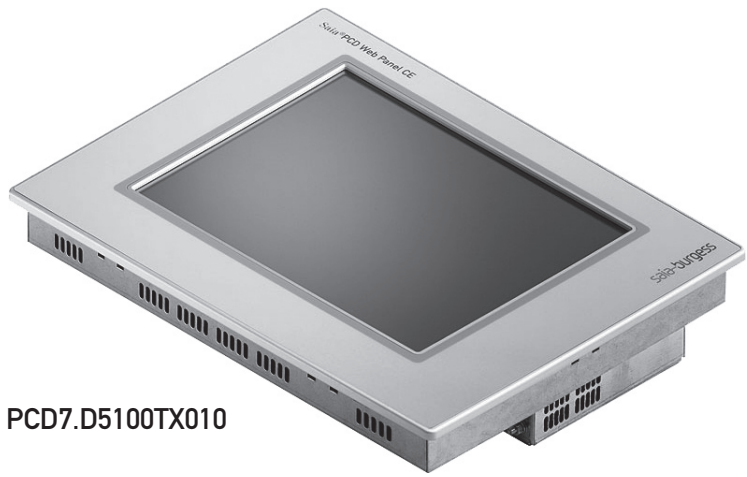
Mounting instructions and user guide

The PCD7.D5xxx series

Controls Division



PCD7.D5064TX010



PCD7.D5100TX010

Quickstart guide for Saia® PCD Web-Panel CE

Please read carefully

Thank you for choosing a Saia® PCD Web-Panel CE. Your Web-Panel is fitted with the advanced Windows CE operating system as standard, with a huge range of functions that you can make use of as an experienced user. However, you do not need to be an embedded Windows specialist to use a Windows CE Web-Panel. This guide will enable you, even without any Windows CE knowledge, to configure your Web-Panel to your requirements in the minimum time.

This guide assumes that you wish to connect a Saia® PCD Web-Panel CE to a PCD control and display an S-Web Editor project stored entirely within the control.

Configuration according to this guide should take approx. 5 minutes.

Note:

The operating system for your Web-Panel runs in transient RAM (memory). Any settings that you enter are therefore held initially in main memory only. To save the settings to the compact flash card (CFC), you must re-boot (step 5). Otherwise, you will lose your settings when you switch off.

You can commission your Web-Panel in just five steps:

- Step 1: Hardware and interfaces
- Step 2: Enable screen keyboard
- Step 3: Establish connection to control
- Step 4: Set up micro-browser
- Step 5: Save settings

saia-burgess

Smart solutions for comfort and safety

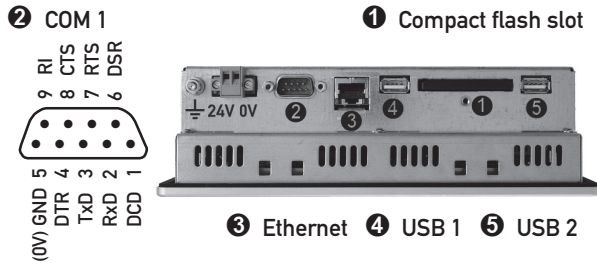
English

Deutsch

Français

Italiano

Step 1: Hardware and interfaces



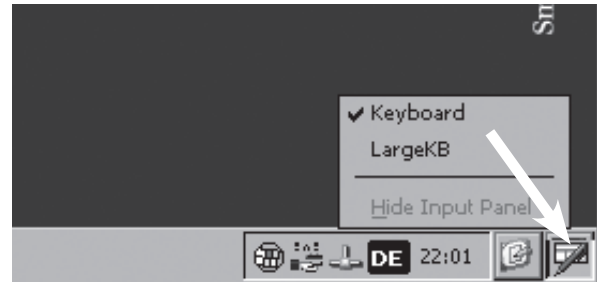
- 1 Compact flash slot according to CFA-Standard (type 1). Change card only with the device switched off.
- 2 The serial port COM 1 is configured to the PC XT/AT standard. The interface is not electrically isolated.
- 3 The integrated Ethernet interface allows the units to be simply incorporated into existing computer networks or used as web panels.
- 4 and 5 The 2 USB host-ports can be used to connect external keyboards, mice, USB sticks or certain models of printer.

- Connect the Web-Panel to the PCD control via an interface of your choice.
- Connect the Web-Panel to a 24 volt power supply. The Panel starts up with the typical Windows CE desktop.



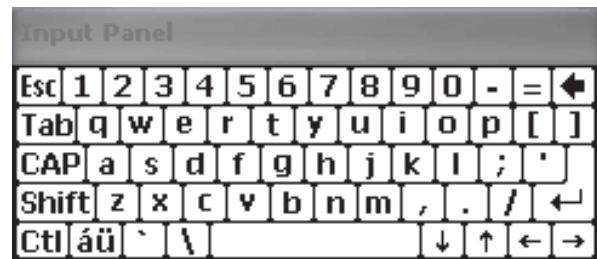
Step 2: Enable screen keyboard

At the extreme right of the task bar is the icon for the screen keyboard. Clicking on this opens a context menu.



You have a choice between a small, compact keyboard (⇒ Keyboard) and a full Windows keyboard with larger keys (⇒ LargeKB).

Keyboard:



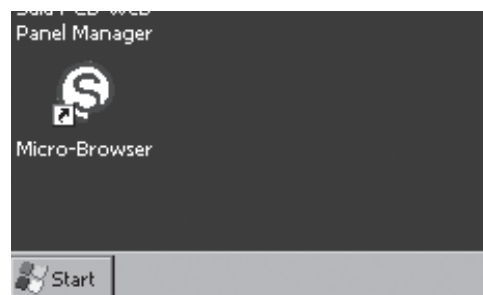
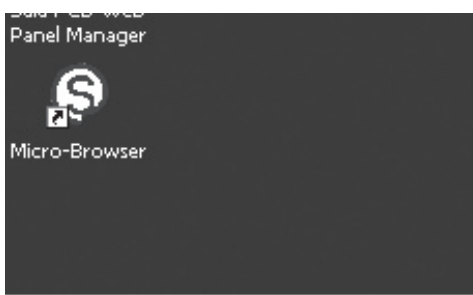
Large KB:



You can open and use the keyboard from any application by clicking on the screen keyboard icon. The keyboard can be moved anywhere within the display. When you no longer need the keyboard, you can disable it with "Hide Input Panel".

Note:

As with every recent Windows system (from Windows 95 onwards), the task bar can be hidden in Windows CE. If no task bar is visible on your Web-Panel, move the mouse cursor to the bottom of the display, and the task bar will be restored.



Step 3: Establish connection to control

You can connect your Web-Panel to the control via the following interfaces:

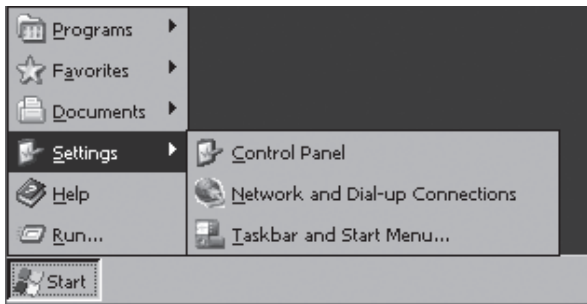
- Ethernet
- USB
- COM1 serial interface

You can communicate directly with a PCD control via the Ethernet interface, provided that the control supports HTTP Direct communication (e.g. PCD3). Use of the Web Connect server installed on the Web-Panel allows PCD controls to be addressed via Ethernet (S-Bus), USB and serial interfaces.

Set IP address

If you use the Ethernet interface, you need to configure the IP address and subnet mask..

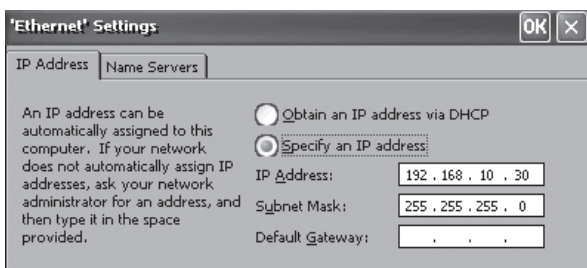
Select "Settings" from the Start Menu, then "Network and Dial-up Connections".



In the window that opens, select "ETHERNET".



The 'Ethernet' Settings dialogue will open.



Depending on your network topology, either select automatic IP assignment via DHCP (⇒ „Obtain an IP address via DHCP“) or specify a fixed IP address and subnet mask (⇒ „Specify an IP address“). To connect to the control, it is not necessary to enter a default gateway.

Close the dialogue with the OK button. Please note that in Windows CE, the OK button is located at the top right on the title bar of the window.

If you communicate with the PCD control via HTTP direct, you do not need Web Connect. You can skip the next section "Configuring Web Connect".

Configuring Web Connect

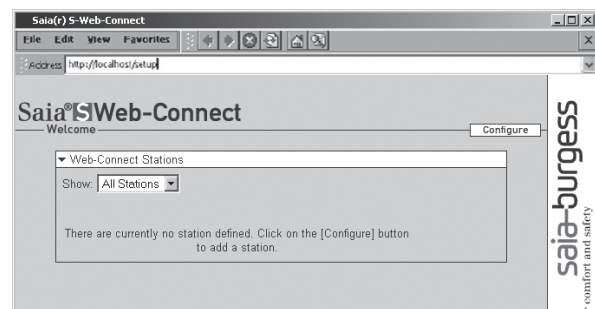
If you connect PCD controls via USB or the serial port, you need to use Web Connect. Web Connect is also needed if you want to address PCD controls via Ethernet using the S-Bus protocol.

On your Web-Panel, the Web Connect server is pre-installed, and is launched automatically with the Panel. You can configure Web Connect via the integrated default browser, Microsoft Internet Explorer.

Start Internet Explorer from the icon on the desktop.

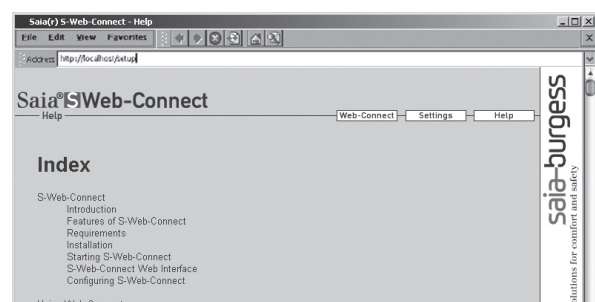


Internet Explorer starts up with the Web Connect setup page.



Add a new station for the PCD control.

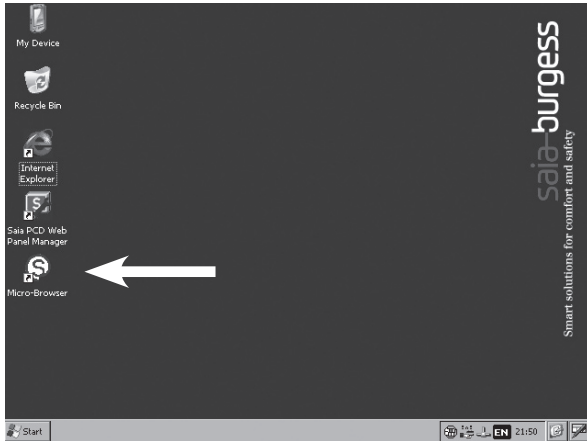
Clicking on "Help" you can obtain further information from the Web Connect online help facility.



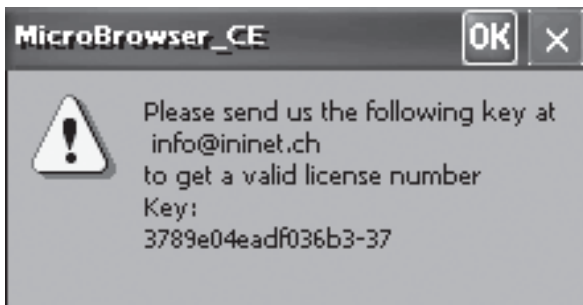
Step 4: Set up micro-browser

On your Web-Panel, a browser is pre-installed ready to display user interfaces. The micro-browser is a viewer optimized for the display of S-Web projects, and guarantees fast paging and smooth operation.

Start the micro-browser from the icon on the desktop.

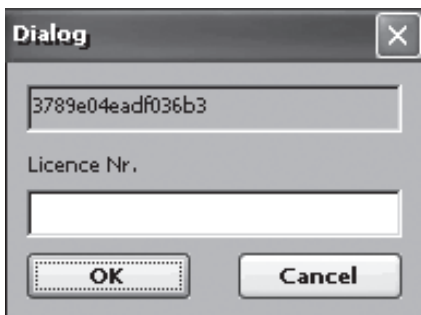


The micro-browser carries a license charge. The micro-browser has to be enabled in the same way as in Windows XP. At the first start-up, a dialogue opens, in which you will find the individual key for your Web-Panel.



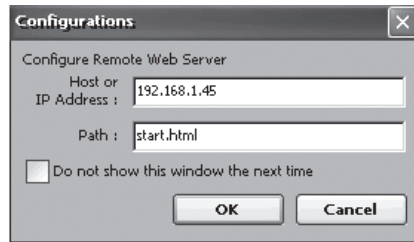
Contact your nearest Saia-Burgess Control office and give them the hardware key. You will then receive the individual license number for your Web-Panel, free of charge.

Click OK and enter the license number:



Finish by clicking OK.

A window will appear, in which you have to enter the IP/Internet address for your S-Web project.



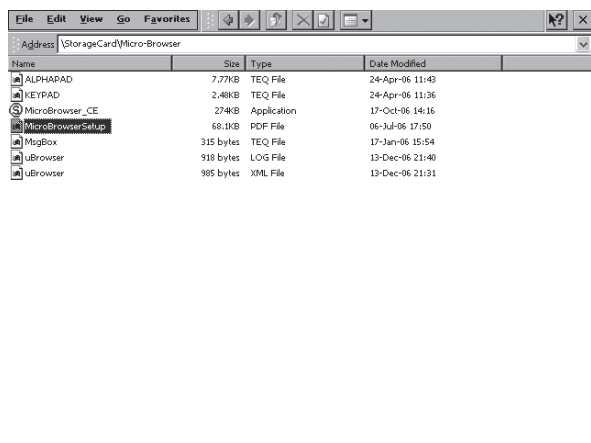
In the "Host or IP Address" field, you only need to enter the IP address or a DNS name (minus the http:// prefix) for the control in which the S-Web project is stored. If you are using Web Connect, specify "localhost" or IP address "127.0.0.1".

In the "Path" field, enter the name of the home page for your S-Web project. If you are using Web Connect, the station name should also be set. The station name and the name of the home page must be separated by "/".

If all details are correct, the home page for your S-Web project will appear on the display after a brief loading time.

The micro-browser can be terminated by entering Shift-X.

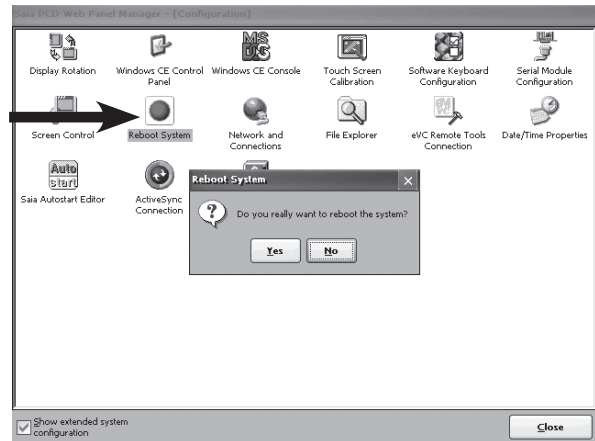
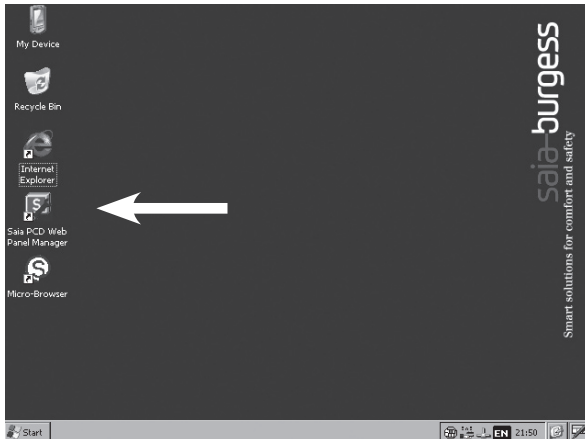
For other configuration options for the micro-browser, please refer to the PDF file "MicroBrowserSetup.pdf". You will find it in the "\StorageCard\Micro-Browser" directory.



Step 5: Save settings

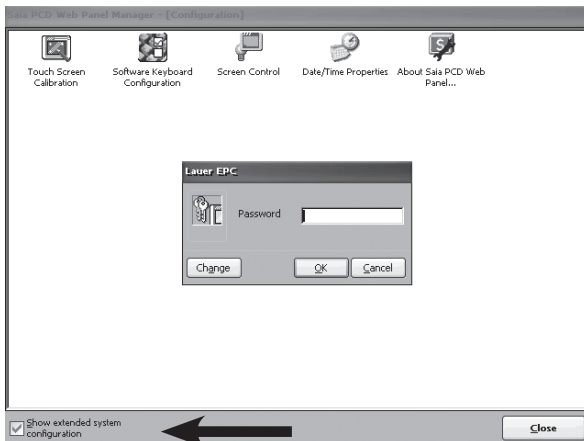
You have now entered all the essential settings for your Web-Panel. So far, however, these are only held in the transient main memory of the Web-Panel, i.e. when you switch the Panel off, the settings will be lost. To save them permanently, a reboot is necessary. This will cause the settings to be saved to the compact flash card (“StorageCard”) and the Panel to be restarted.

Open the Saia PCD Web-Panel Manager from the icon on the desktop



Congratulations - you have now completed the basic configuration of your Web-Panel.

Activate the expanded view of the Saia® PCD Web-Panel Manager. A dialogue will appear asking for a password. In the default setting, no password is configured. Simply click OK.

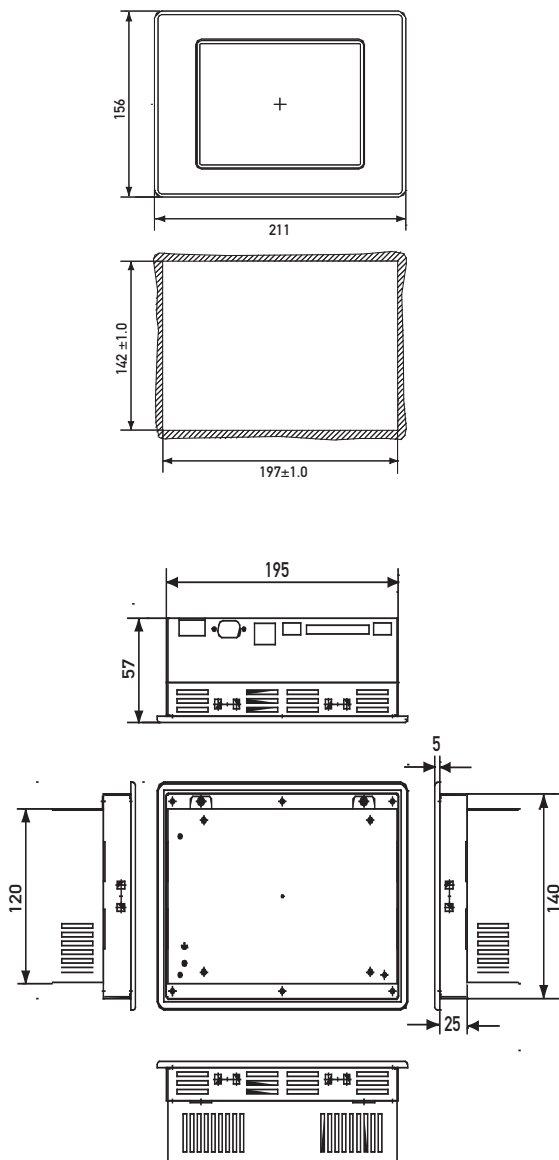


In the expanded view, click on the “Reboot System” icon and respond “Yes” to the confirmation dialogue.

Dimensions and aperture size

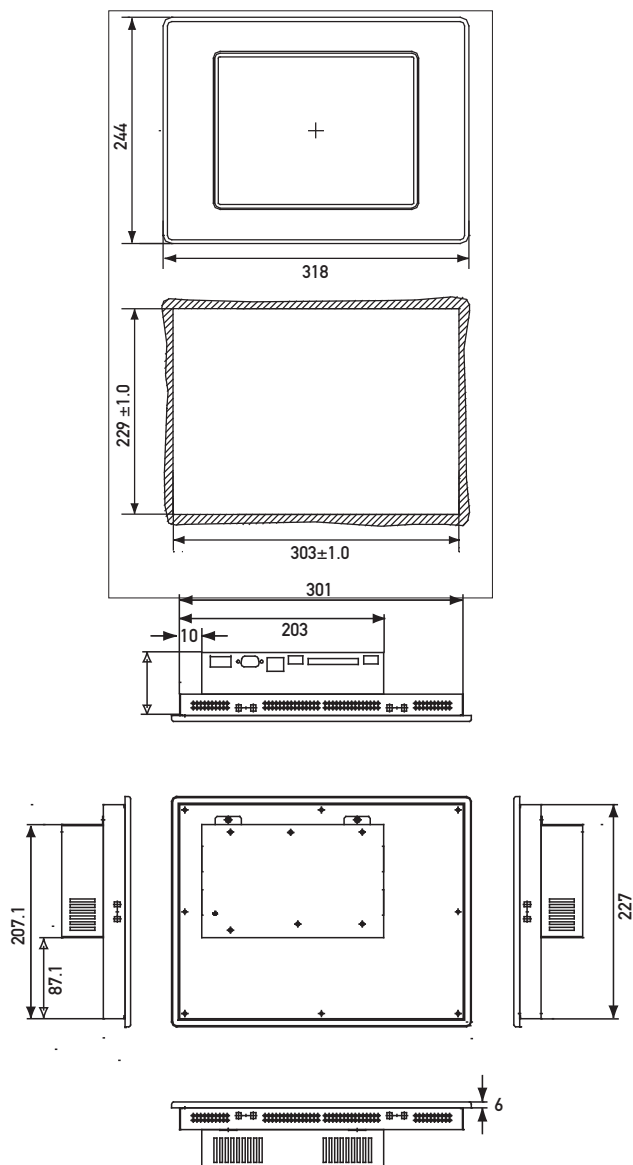
PCD7.D5064TX010

Weight: 1.4 kg



PCD7.D5100TX010

Weight: 2.7 kg



saia-burgess
Smart solutions for comfort and safety

English

Type of fixing: 6 aluminium or plastic brackets with grub screws M5×30, DIN 914, pointed with hexagonal recess, zinc-plated.

Further information

For further information, please consult the following sources:

- Manual for PCD7.D5xxx series, document 26/8433
- Saia-Burgess Controls Support website <http://www.sbc-support.ch>

Saia-Burgess Controls Ltd.

Bahnhofstrasse 18 | CH-3280 Murten | Switzerland
T +41 26 / 672 71 11 | F +41 26 / 672 74 99
pcc@saia-burgess.com | www.start-controls.com

4 319 5041 0 02.2007

Subject to change without notice