
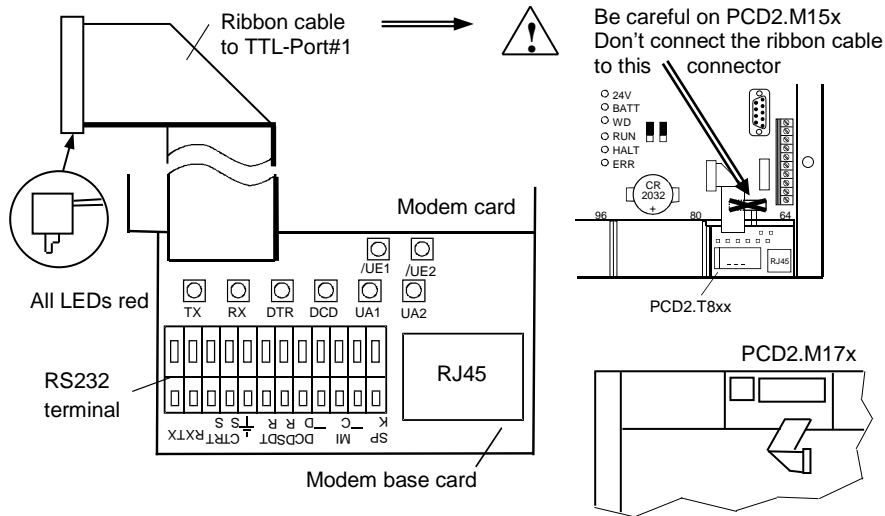


Modem module PCD2.T8xx


 Please contact your local sales office for detailed description of Hardware, Modem Library and Init-Strings

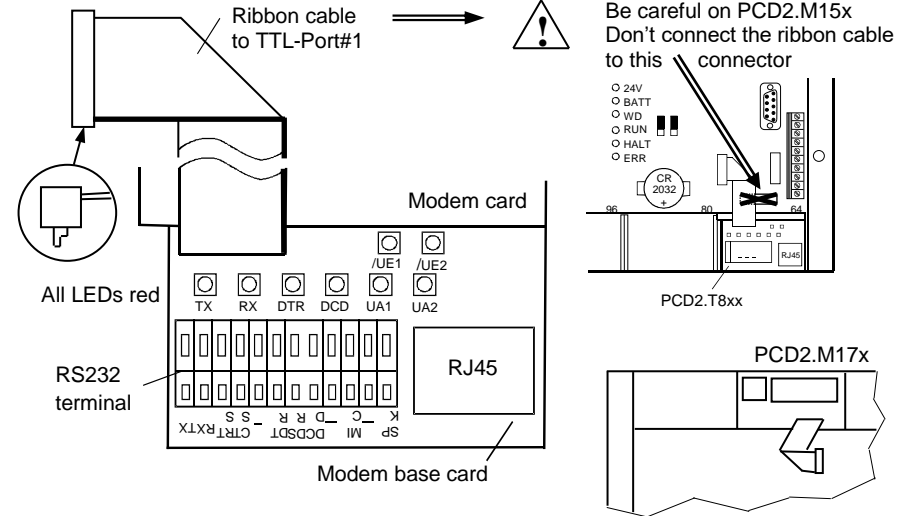


Meaning of LEDs for analogue modem:

	Analogue modem (PCD2.T813)	ISDN Terminal Adapter (PCD2.T850)
TX	Transmit Data on when modem receives data from PCD	Transmit Data on when modem receives data from PCD
RX	Receive Data on when the PCD receives data from modem	Receive Data on when the PCD receives data from modem
DTR	Data Terminal Ready on when the PCD is ready for communication	Data Terminal Ready on when the PCD is ready for communication
DCD	Data Carrier Detect on when a valid support signal (carrier) is recognised from the telephone network	Data Carrier Detect on when an ISDN connection is active (B.channel active and synchronised to the remote modem)
UA1	User Output 1 (seen from modem side) not yet implemented in modem firmware	User Output 1 (seen from modem side) on when a S0-Bus is active (digital connection)
UA2	User Output 2 (seen from modem side) not yet implemented in modem firmware	User Output 2 (seen from modem side) not yet implemented in modem firmware
/UE1	User Input 1 (seen from modem side) not yet implemented in modem firmware	User Input 1 (seen from modem side) not yet implemented in modem firmware
/UE2	User Input 2 (seen from modem side) not yet implemented in modem firmware	User Input 2 (seen from modem side) not yet implemented in modem firmware

Modem module PCD2.T8xx

 Please contact your local sales office for detailed description of Hardware, Modem Library and Init-Strings



Meaning of LEDs for analogue modem:

	Analogue modem (PCD2.T813)	ISDN Terminal Adapter (PCD2.T850)
TX	Transmit Data on when modem receives data from PCD	Transmit Data on when modem receives data from PCD
RX	Receive Data on when the PCD receives data from modem	Receive Data on when the PCD receives data from modem
DTR	Data Terminal Ready on when the PCD is ready for communication	Data Terminal Ready on when the PCD is ready for communication
DCD	Data Carrier Detect on when a valid support signal (carrier) is recognised from the telephone network	Data Carrier Detect on when an ISDN connection is active (B.channel active and synchronised to the remote modem)
UA1	User Output 1 (seen from modem side) not yet implemented in modem firmware	User Output 1 (seen from modem side) on when a S0-Bus is active (digital connection)
UA2	User Output 2 (seen from modem side) not yet implemented in modem firmware	User Output 2 (seen from modem side) not yet implemented in modem firmware
/UE1	User Input 1 (seen from modem side) not yet implemented in modem firmware	User Input 1 (seen from modem side) not yet implemented in modem firmware
/UE2	User Input 2 (seen from modem side) not yet implemented in modem firmware	User Input 2 (seen from modem side) not yet implemented in modem firmware

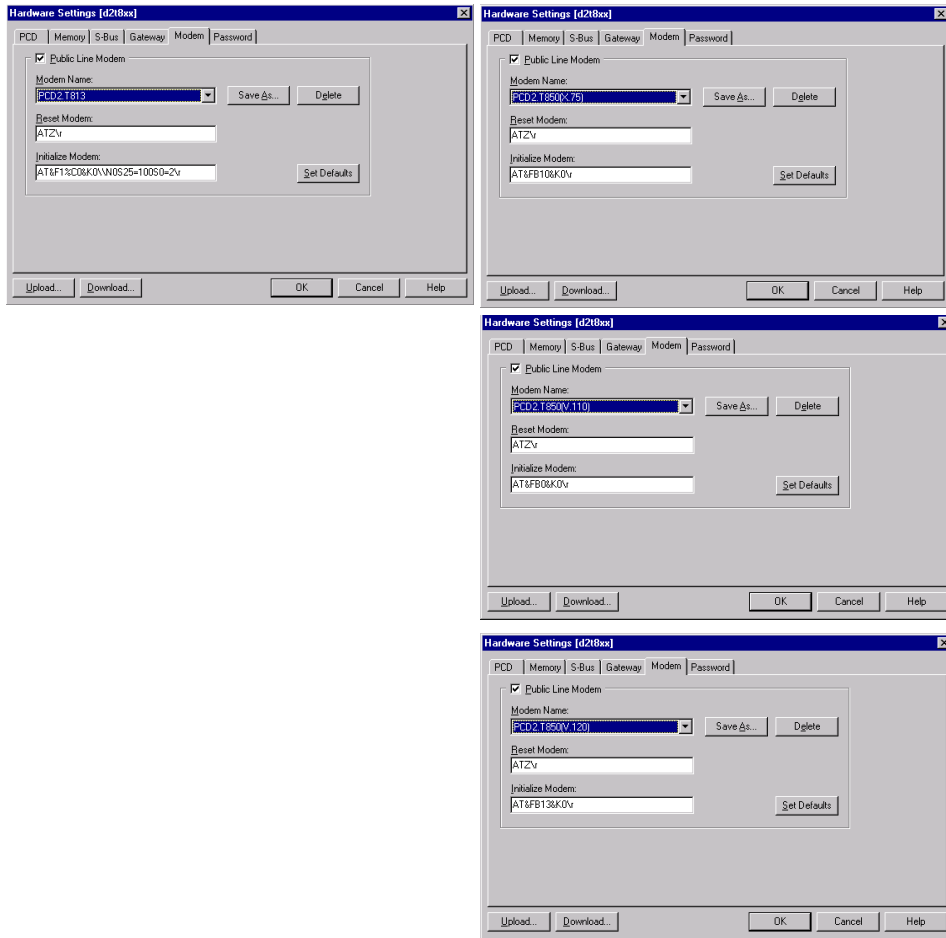
Screwless terminals (12 pins) for the connection to an RS232-Interface of the PCD1/PCD2 :

Pin Nr.	Pin name	Pin Nr.	Pin name	Pin Nr.	Pin Name
1	TXD	5	PGND	9	GND
2	RXD	6	DTR	10	NF IN (MIC)
3	RTS	7	DSR	11	GND
4	CTS	8	DCD	12	NF OUT (SPK)

Init-Strings for PCD2.T813 and PCD2.T850 (Protocol V.110, V.120 and X75) downloaded by Online Configurator

PCD2.T813

PCD2.T850 (Protocol X.75, V.110 and V.120)



For PCD2.T850 msn (multiple subscriber number) is initialized by adding the following AT-Command in the Online Configurator and in the Modem Library (modembase.dat):

AT#Z=nn set msn to nn

Example for PCD2.T850 (X.75): AT&FB10&D2&K0&R1&S0#Z=01\r

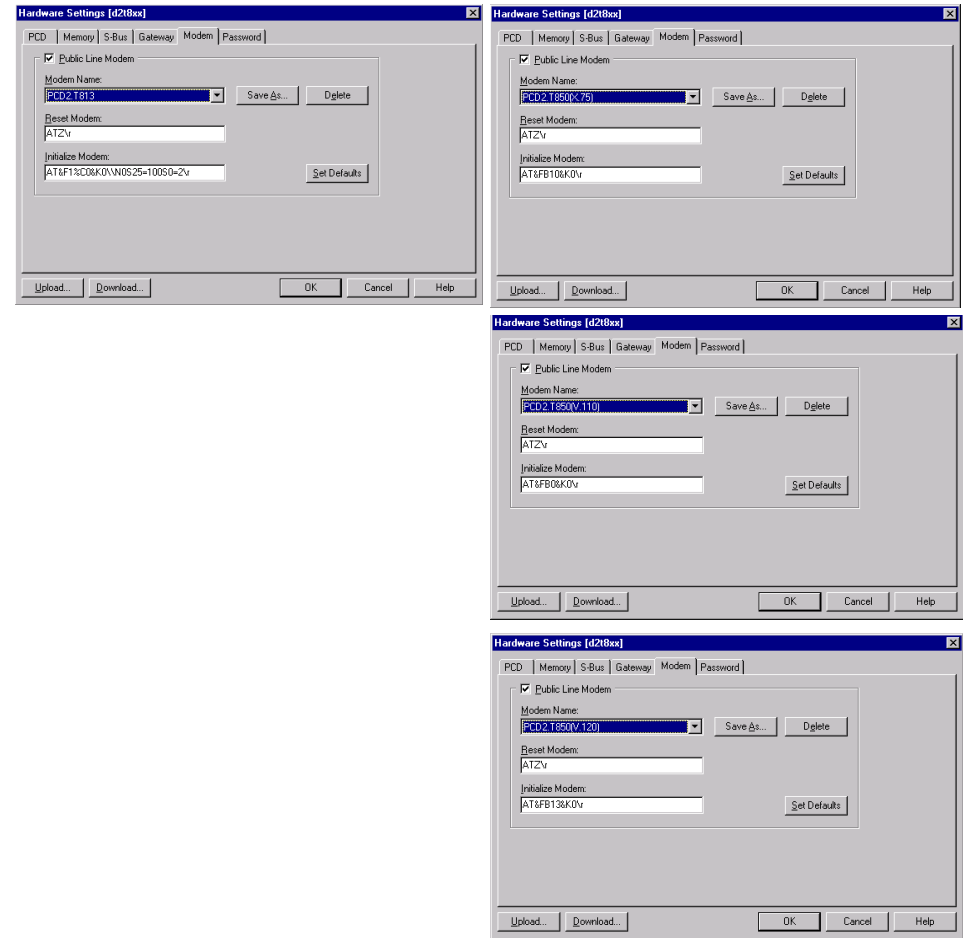
Screwless terminals (12 pins) for the connection to an RS232-Interface of the PCD1/PCD2 :

Pin Nr.	Pin name	Pin Nr.	Pin name	Pin Nr.	Pin Name
1	TXD	5	PGND	9	GND
2	RXD	6	DTR	10	NF IN (MIC)
3	RTS	7	DSR	11	GND
4	CTS	8	DCD	12	NF OUT (SPK)

Init-Strings for PCD2.T813 and PCD2.T850 (Protocol V.110, V.120 and X75) downloaded by Online Configurator

PCD2.T813

PCD2.T850 (Protocol X.75, V.110 and V.120)



For PCD2.T850 msn (multiple subscriber number) is initialized by adding the following AT-Command in the Online Configurator and in the Modem Library (modembase.dat):

AT#Z=nn set msn to nn

Example for PCD2.T850 (X.75): AT&FB10&D2&K0&R1&S0#Z=01\r