




Saia PCD® Supervisor

Description

Saia PCD® Supervisor is a building monitoring and management solution built upon the powerful Niagara 4 platform. It is capable of integrating Saia PCD® controllers, third party devices and internet protocols into a centralised software platform that is designed to manage buildings at an enterprise level.

Saia PCD® Supervisor serves real-time graphical information to standard web-browser clients and also provides server-level functions such as: centralized data logging, archiving, alarming, trending, master scheduling, system-wide database management, and integration with enterprise software applications – all of which can be used for highlighting and investigating energy use within buildings.

In addition, Saia PCD® Supervisor provides a comprehensive, graphical engineering toolset for application development. HTML5 support enables the customisation of user interfaces that are viewable on diverse web-enabled computers, tablets and phones.

Third party device integration using open standard protocols such as BACnet, Modbus, M-Bus and KNX is also supported.

Features

- Saia PG5® Data Import Wizard allows the easy and fast import of PG5 symbols, alarm lists and HDLog configuration into the Saia PCD® Supervisor.
- Native S-Bus over IP driver capable to access PCD devices including serial gateway (Read Write PCD media, Alarming and HDLog integration).
- HTML5 compliant web framework for full smart device compatibility.
- Supports an unlimited number of users over the Internet / Intranet with a standard web browser, depending on the host PC resources.
- Optional enterprise-level data archival using SQL.
- “Step by step documented history” of database changes, database storage and backup, global time functions, calendar, central scheduling, control and energy management routines.
- Sophisticated alarm processing and routing, including email alarm acknowledgment.
- Access to alarms, logs, graphics, schedules and configuration data with a standard web browser.
- Password protection and security using standard authentication and encryption techniques with optional security supported via an external LDAP connection.
- HTML-based help system that includes comprehensive on-line system documentation.
- Provides online/offline use of the Niagara Framework Workbench graphical configuration tool and a comprehensive Java Object Library.
- Optional direct Ethernet based driver support for BACnet IP, EIB/KNX IP, LON IP, Modbus IP master and slave, M-Bus IP, SNMP and OPC client; additional point blocks for each driver may be purchased - see page 3.
- Enhanced BACnet utility for point propriety and EDE import wizard to engineer BACnet system.
- Saia PG5® – icon gallery static palette available (SVG).

COMPATIBILITY

Saia PCD® Supervisor provides connectivity to a Saia PCD® system. Compatibility with PG5 projects starting with versions than V2.1.

Supported PCD devices:

Saia PCD® with Ethernet Interface for direct connection to Niagara or RS-485 interface for connection to a gateway station, where the gateway station does have an Ethernet connection to Niagara:

- ▶ PCD1.M0160E0
- ▶ PCD1.M2xx0
- ▶ PCD2.M4x60
- ▶ PCD2.M5xx0
- ▶ PCD3.Mxxx0
- ▶ PCD7.D4xxT5x

PCD's with RS-485 interface for connection to a gateway station, where the gateway station does have an Ethernet connection to Niagara:

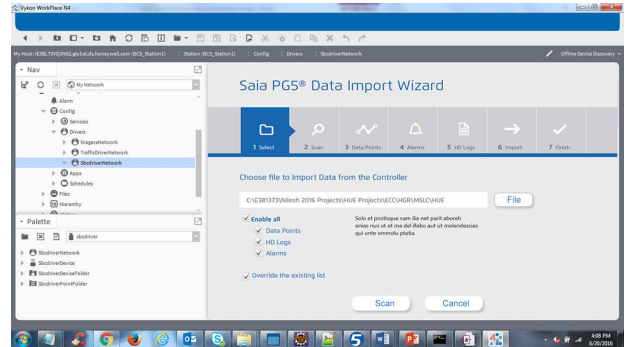
- ▶ PCD1.G/F/Wxxx-xx5 with RS-485 (as slave of a gateway station)

Access to the following PCD resources:

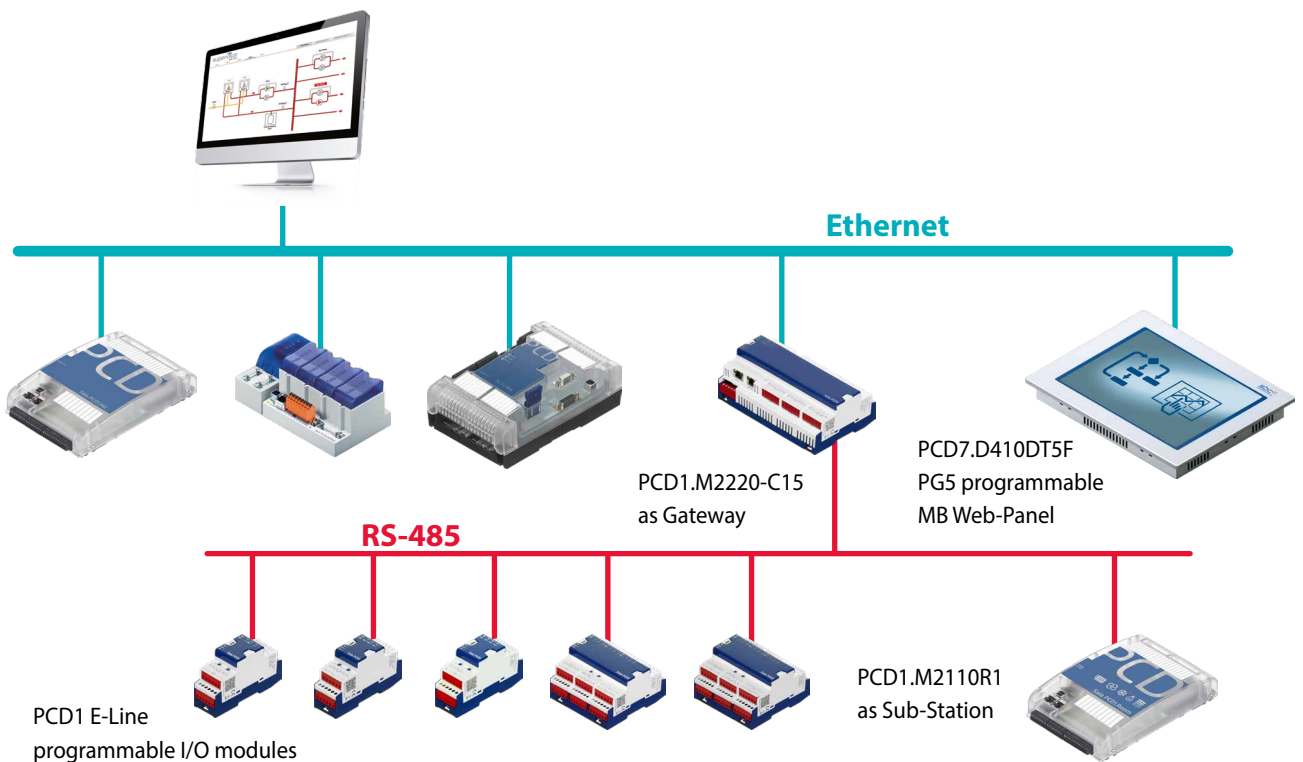
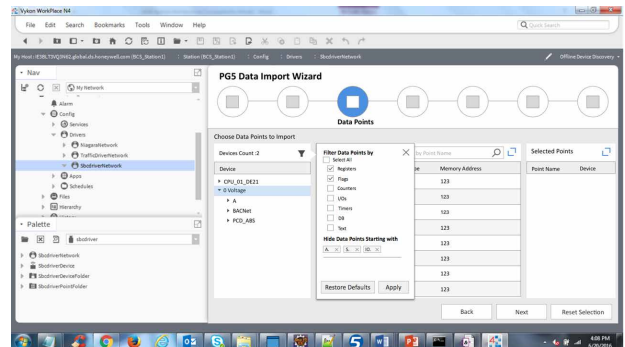
- ▶ Inputs
- ▶ Outputs
- ▶ Flags
- ▶ Register
- ▶ Data block
- ▶ Text
- ▶ Timer
- ▶ Counter
- ▶ Alarming
- ▶ HDLog
- ▶ PCD Status
- ▶ PCD Clock
- ▶ PCD Firmware

Saia PCD® Import Wizard:

- ▶ Saia PG5® Import Wizard allows the easy and fast import of symbols and alarm lists with alarm texts from a Web Editor8 project and HDLog lists previously defined in PG5 projects into the Saia PCD® Supervisor



- ▶ Filtering functions support import of only selected symbols



- ▶ Ethernet communication to PCD's and on PCD's over RS-485 which are connected behind a gateway.

ORDER CODES

The Saia PCD® Supervisor license scheme is based around a point count. A point is a single item of information that is stored into the Saia PCD® Supervisor database and in the case of the Saia PCD® system includes Flags, registers, Inputs, Outputs, etc., that you may want to add into Saia PCD® Supervisor.

There are two main categories of point in Saia PCD® Supervisor - genuine SBC points and open points:

Genuine SBC points

These are points controlled by SBC manufactured controllers (PCD1, PCD2, PCD3 and PCD7) and accessed using the S-Bus Protocol. For this category of device the license is sized on the points you want to monitor. Point discovery is an embedded feature available through the Saia PG5® Import Wizard embedded in the S-Bus driver. SBC devices and networks are not counted for licensing purposes. The main ordering codes are listed below:

PCD8.SUP-500	Saia PCD® Supervisor basic package including SBC S-Bus driver and 500 points database size
PCD8.SUP-2500	Saia PCD® Supervisor basic package including SBC S-Bus driver and 2,500 points database size
PCD8.SUP-10000	Saia PCD® Supervisor basic package including SBC S-Bus driver and 10,000 points database size

In case more points are needed to meet system requirements, the desired Saia PCD® Supervisor database size can be reached with any combination of Starter Kit and the following Point Extensions.

PCD8.SUP-100EXT	Saia PCD® Supervisor additional 100 SBC database points
PCD8.SUP-2500EXT	Saia PCD® Supervisor additional 2,500 SBC database points
PCD8.SUP-5000EXT	Saia PCD® Supervisor additional 5,000 SBC database points
PCD8.SUP-15000EXT	Saia PCD® Supervisor additional 15,000 SBC database points

Open points

These are points from open protocol equipped devices or subsystems that you wish to integrate straight into Saia PCD® Supervisor. The Saia PCD® Supervisor open driver packs include a selection of standard drivers that you can select to be used to perform head end integration.

Standard drivers are: BACnet IP, EIB/KNX IP, LON IP, Modbus IP master and slave, M-Bus IP, SNMP and OPC client. Open driver packs ordering codes are listed below:

PCD8.SUP-500OPEN	Extend base license with additional 500 open protocols points
PCD8.SUP-2500OPEN	Extend base license with additional 2,500 open protocols points
PCD8.SUP-5000OPEN	Extend base license with additional 5,000 open protocols points
PCD8.SUP-10000OPEN	Extend base license with additional 10,000 open protocols points

Please note that open protocol license management is delivered in a way that as soon as you reach the limit for point count customers need to request license upgrade accordingly.

Maintenance upgrade options

Saia PCD® Supervisor basic packages include an 18 months maintenance and free upgrade package. This can be extended by purchasing one of the following maintenance upgrade options:

PCD8.SUP-MNT1	Saia PCD® Supervisor maintenance upgrade - additional 1 year
PCD8.SUP-MNT3	Saia PCD® Supervisor maintenance upgrade - additional 3 years
PCD8.SUP-MNT5	Saia PCD® Supervisor maintenance upgrade - additional 5 years

Extended support options

PCD8.SUP-DB-CSV	Extend the capability for the supervisor to interact with Microsoft Excel
PCD8.SUP-DB-MYSQL	Extend the capability for the supervisor to communicate with MySQL Server
PCD8.SUP-DB-ORCL	Extend the capability for the supervisor to communicate with Oracle Server
PCD8.SUP-DB-SQL	Extend the capability for the supervisor to communicate SQL Server

Partner license agreements

PCD8.SUP-NAA-MON	Saia PCD® Supervisor Starter kit, monthly agreement for 1 engineer*
PCD8.SUP-NAA-STK1	Saia PCD® Supervisor Starter kit, annual agreement for 1 engineer
PCD8.SUP-NAA-STK5	Saia PCD® Supervisor Starter kit, annual agreement for 5 engineers
PCD8.SUP-NAA-REN	Saia PCD® Supervisor annual agreement renewal
PCD8.SUP-NAA-ENG	Saia PCD® Supervisor one additional engineering license

* PCD8.SUP-NAA-MON licenses can only be purchased by new partners. From purchase's month until renewal. You must always purchase as many monthly licenses as you need for the period until November 30th. After November 30th, they will be renewed for 1 year with the normal PCD8.SUP-NAA-REN.

PLATFORM REQUIREMENTS

Saia PCD® Supervisor will run on the following operating systems:

- Windows 10 (32-bit),
- Windows 10 (64-bit),
- Windows 8.1 Professional/Enterprise/Ultimate (32-bit),
- Windows 8.1 Professional/Enterprise/Ultimate (64-bit),
- Windows 7 Professional/Enterprise/Ultimate (32-bit),
- Windows 7 Professional/Enterprise/Ultimate (64-bit),
- Windows Server 2012 R2 Standard/Enterprise (SP2) (64-bit)
- Windows Server 2016
- Windows Server 2019

Your PC must comply with the minimum specification for the installed operating system as specified by Microsoft.

In addition to meeting the requirements for the operating system Saia PCD® Supervisor requires the following:

- Processor : Intel® Xeon® CPU E5-2640 x64 (or better), compatible with dual- and quad-core processors
- Operating System : Windows 7 (if N4 supports), 10, 64-bit
Windows 8.1 Enterprise,
Windows Server 2012 Standard and 2012 R2 Standard
- Memory : 4 GB minimum, 8 GB or more recommended for larger system
- Free Hard Drive Space : 4 GB minimum, more recommended depending on archiving requirements
- Display : Video card and monitor capable of displaying 1680 × 1050 pixel resolution or greater
- Network Support : Ethernet adapter (10/100 MB with RJ-45 connector)
- Connectivity : Full-time high-speed ISP connection recommended for remote site access (i.e., T1, ADSL, cable modem)

If enterprise-level data archiving is required (optional), one of the following compatible database applications will need to be installed:

- MS SQL Server 2012,
- MS SQL Server 2016,
- MySQL Server 5.7,
- MySQL Server 8.0,
- Oracle Express 11g.

INSTALLATION

Saia PCD® Supervisor is available as a download:

<https://sbc-support.com/en/product-index/saia-pcd-supervisor/>

Once downloaded to your PC/laptop a step-by-step installation program will guide you through the installation process.

Saia-Burgess Controls AG

Bahnhofstrasse 18 | 3280 Murten, Switzerland
T +41 26 580 30 00 | F +41 26 580 34 99
www.saia-pcd.com

support@saia-pcd.com | www.sbc-support.com