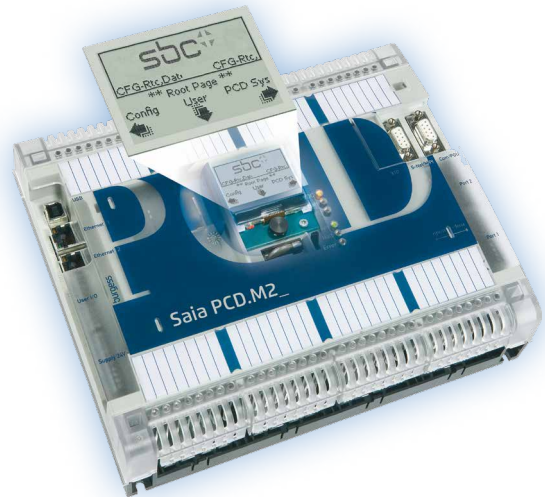


# Integral nano-browser control panel Saia PCD7.D3100E

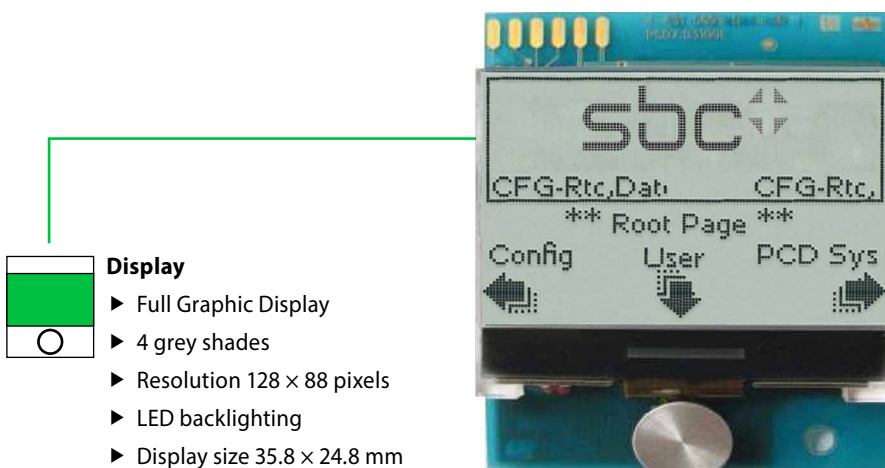


With the PCD7.D3100E, Saia has extended the concept of «seamless control», which has only one HMI project for all devices from the small control unit to any device with a browser (Explorer, Mozilla etc.), to include on-site display of the automation device. This is an exciting and totally new way of having on-site automation device control available anywhere in the network on the PC or PDA – Nano-Browser with a sub-set of Micro-Browser functionality.

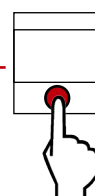
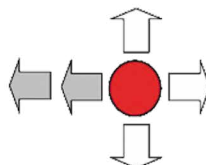
The embedded display (eDisplay) is a graphic display that can be fitted to the new PCD2.M5xx0 series. It has 128 × 88 pixels with 4-level gray scale, backlighting, and a control with 4-way direction and centre push buttons to control the navigation. It displays „Web-Pages“ which are predefined default pages that display the system and setup configurations, or web pages that are created for the application with the Web-editor programming tool.

### Features

- Probably the smallest embedded Web Display (1.9") for automation in the world.
- Easy to install on PCD2.M5 series: No cable, just plug it on. (~ as a flash card).
- Navigation between PCD system parameters and configuration, or directly to the user program.
- Programming with the standard Web editor tool with free license.
- Supports the majority of web-editor objects.
- Supports about a dozen macros, such as password entry level and bargraph.



- Display**
- Full Graphic Display
  - 4 grey shades
  - Resolution 128 × 88 pixels
  - LED backlighting
  - Display size 35.8 × 24.8 mm
  - Dimensions 47 × 67 mm

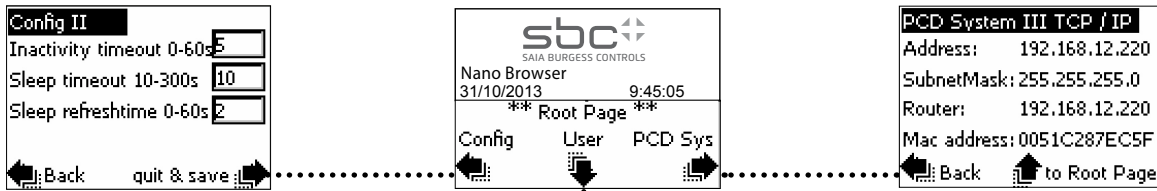


### Operation

- Joystick for navigation
- Joystick with 5 switches for configuration, editing user projects and for PCD system settings, such as CPU type, date and time, TCP/ IP address, etc.

## Predefined configuration screens

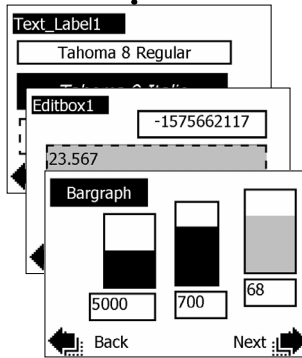
Together with the possibility of editing user defined projects with the Web Editor (version for e-display) a variety of predefined configuration screens for e-display and the PCD system are also available to the user. This makes it easy to implement initial on-site diagnosis and control.



### E-Display

#### Editable configuration parameters

- ▶ User start page
- ▶ Setup timeout
- ▶ Backlighting timeout
- ▶ Contrast
- ▶ Inactivity timeout
- ▶ Sleep timeout
- ▶ Sleep refresh time

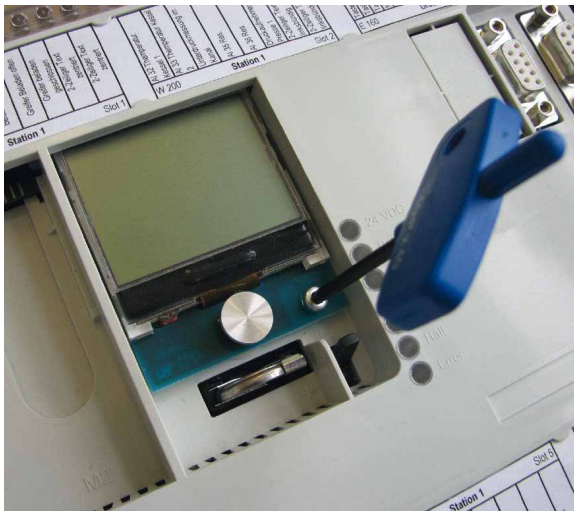


### PCD2 System

#### Status and configuration parameters

- ▶ CPU type and series number
- ▶ HW version
- ▶ FW version
- ▶ MAC address
- ▶ Program name
- ▶ TCP/IP parameters
- ▶ S-Bus address
- ▶ PCD status, time and date

## Assembly



Simply insert and fix in place

## Display



Seamless, on-site control. The display on the automation device is also available throughout the network, on PC or PDA and on other displays. This opens up completely new possibilities.

## Ordering information

| Type        | Description                        | Weight |
|-------------|------------------------------------|--------|
| e-Display   | Embedded display with Nano-Browser |        |
| PCD7.D3100E | eDisplay for PCD2.M5xx0            | 40 g   |

### Saia-Burgess Controls AG

Bahnhofstrasse 18 | 3280 Murten, Schweiz  
T +41 26 672 72 72 | F +41 26 672 74 99  
www.saia-pcd.com

support@saia-pcd.com | www.sbc-support.com