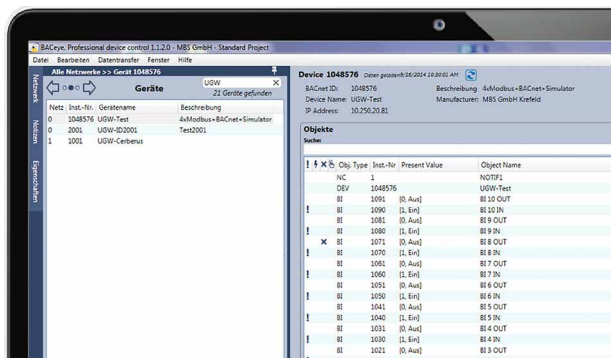
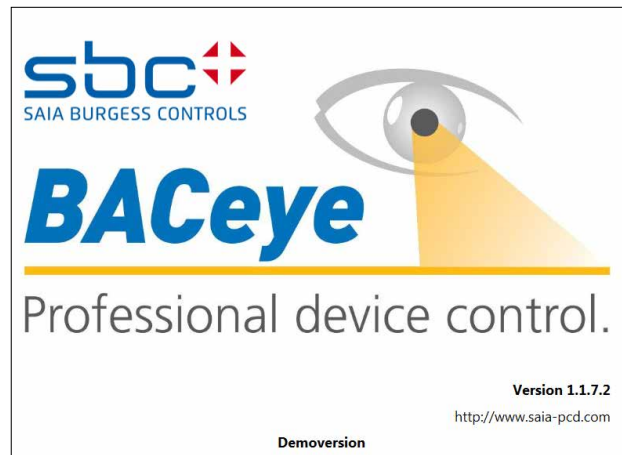


## 1.2.4 BACnet Explorer

BACeye provides an overview in a BACnet network. BACeye can be connected to any BACnet network for easy analysis and switching and for testing events and alarms.



### BACnet networks

With the BACnet Who-Is/I-Am services, devices in the network can be conveniently identified and an image of the device properties and objects can be read in BACeye. A detailed display of all objects allows access to the object properties.

### EDE files

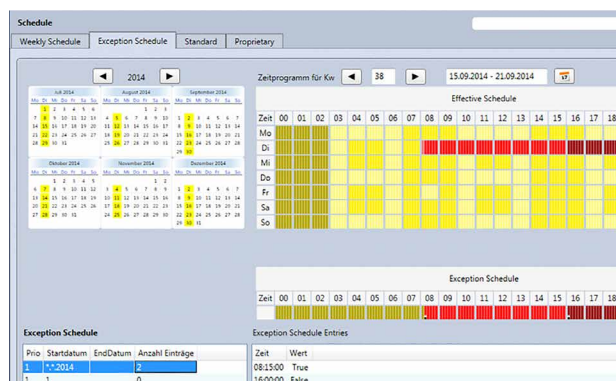
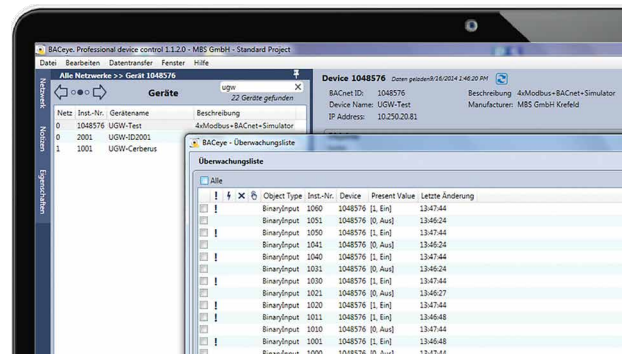
Generate EDE files quickly and easily. The EDE file (Engineering Data Exchange) is a format for a BACnet data point list specified by BACnet Interest Group Europe (BIG-EU).

### Monitoring list

The monitoring list displays the most important properties of the selected objects. The objects can be compiled from the same or from different devices.

### Alarms

All objects are displayed together with their status information (Status\_Flags). Users can of course filter and search for status functions at any time.



### Schedules

BACnet calendar and schedule objects can be conveniently displayed and edited with BACeye.

The weekly program (Weekly Schedule) and the Exception Schedule can be edited separately. The combined display enables an overview of the actual effective value.

The Weekly Schedule and Exception Schedule can be edited separately. The combined display enables an overview of the actual effective schedules.

### Ordering information

BACnet explorer software tool for professional analysis and diagnostics of building automation networks.  
License valid for 1 user

PCD8.BACnet-Eye-1